

# PROJECT FINAL REPORT

**Grant Agreement Number:** FP7-SME-2011-286598

**Project Acronym:** SmartDress

# SMARTDRESS

**Funding Scheme:** FP7 Research for the benefit of SMEs – Capacities

**Project title:** Adaptive tip dress control for automated resistance spot welding

**Period covered:** from 01/12/2011 to 30/11/2013

**Name of the scientific representative of the project's co-ordinator:**

**Sullivan Smith, Principal Project Leader, TWI**

**Project website address:** [www.smartdress-project.eu](http://www.smartdress-project.eu)

**Organisation of the author:**

TWI Ltd

Granta Park, Great Abington

CAMBRIDGE CB21 6AL

United Kingdom

Tel: + 44 (0) 1223 899000

Fax: + 44 (0) 1223 89 0952

E-mail: [Sullivan.Smith@twi.co.uk](mailto:Sullivan.Smith@twi.co.uk)

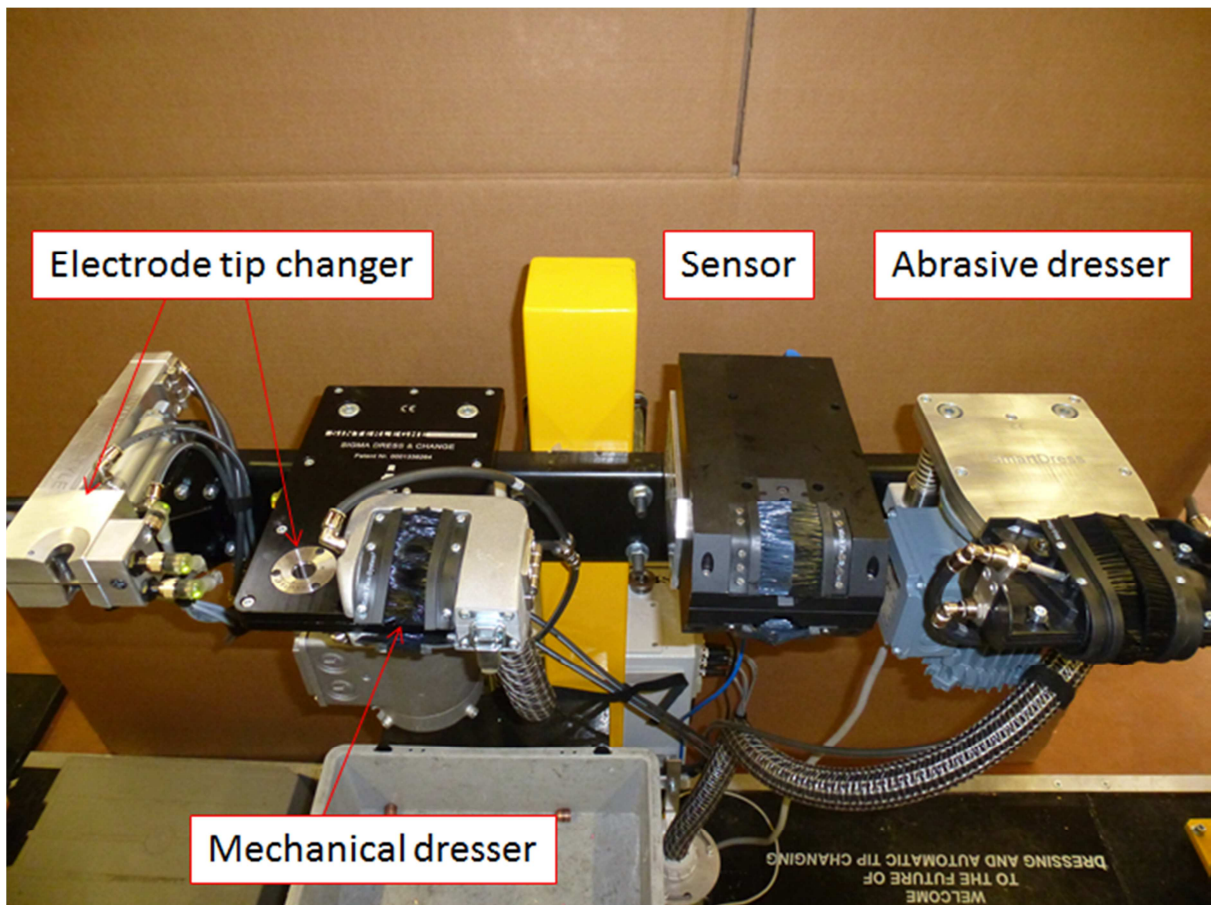


**Research for the benefit of SMEs**

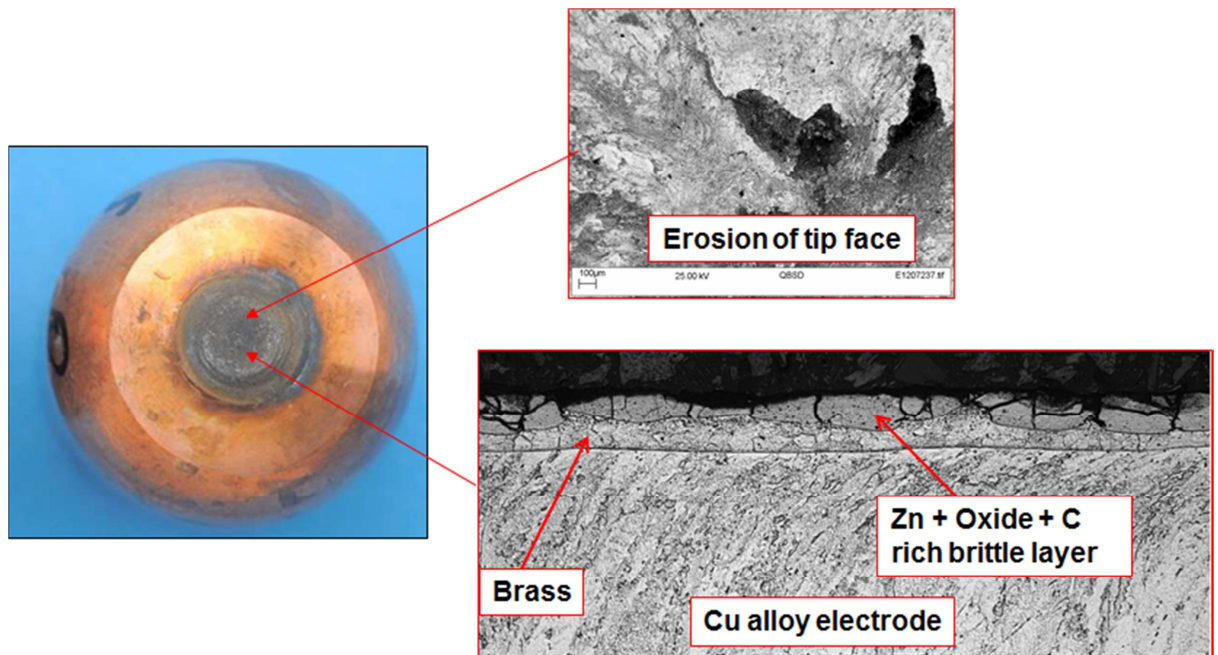
## PROJECT FINAL REPORT - FIGURES



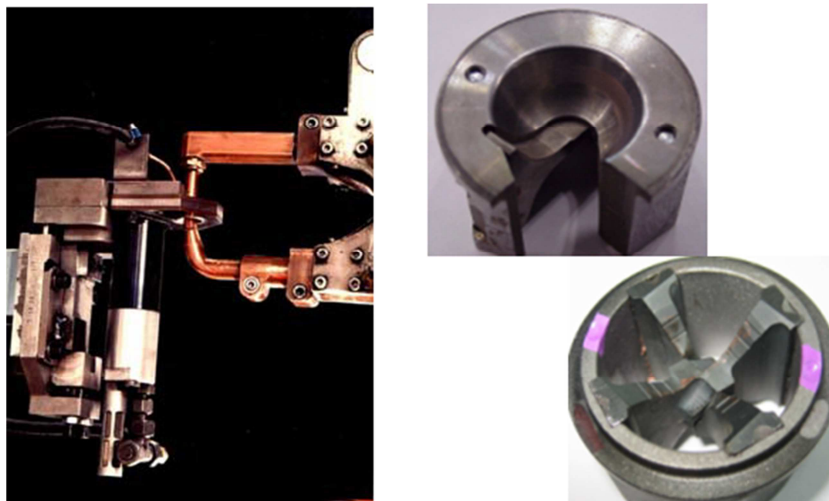
**Figure 1.** Automated car production employing resistance spot welding



**Figure 2.** The SmartDress system

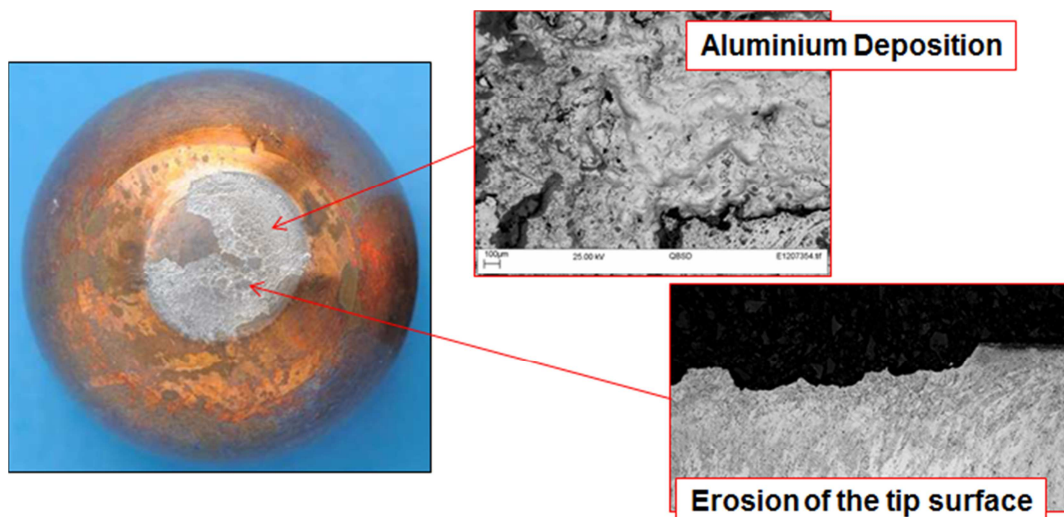


**Figure 3.** Degradation mechanisms of an electrode tip used to weld zinc coated steel

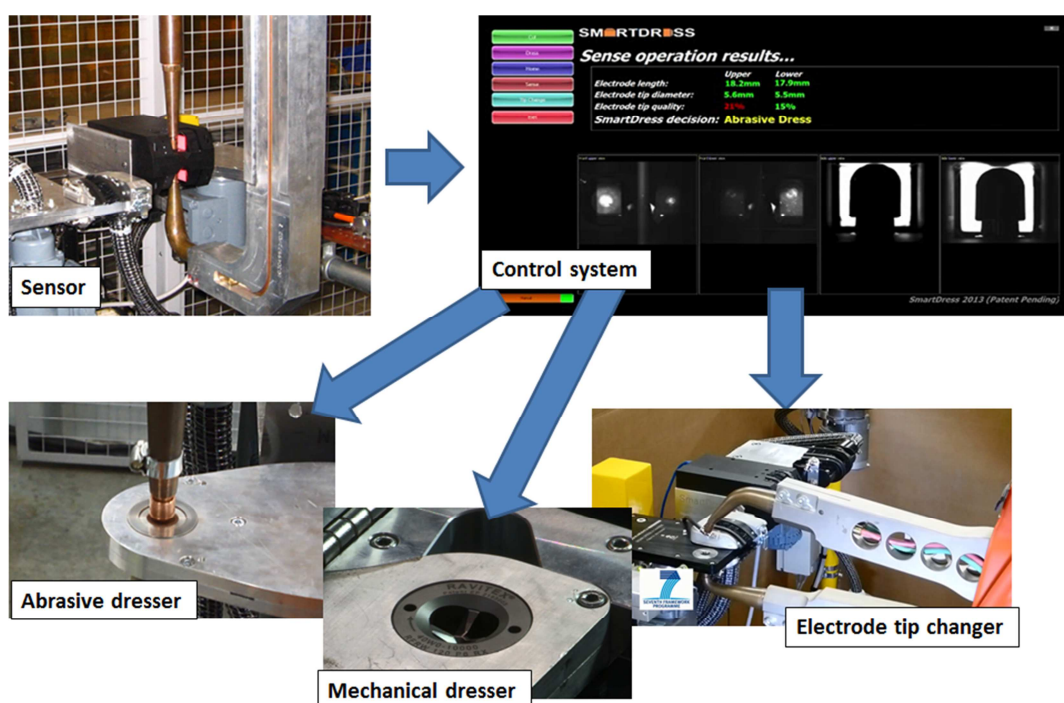


**Figure 4.** State of the art electrode tip dressing using metallic bladed dressers (cutters)

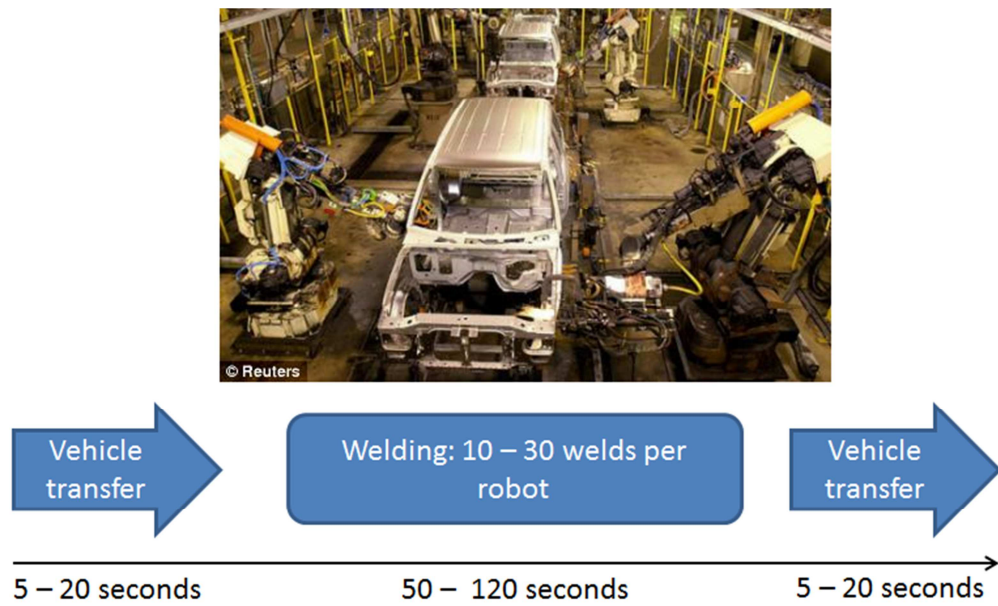




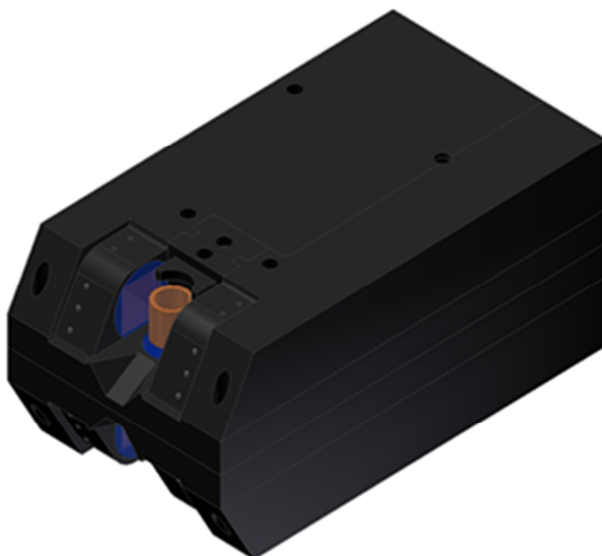
**Figure 5.** Degradation mechanisms of an electrode tip used to weld aluminium



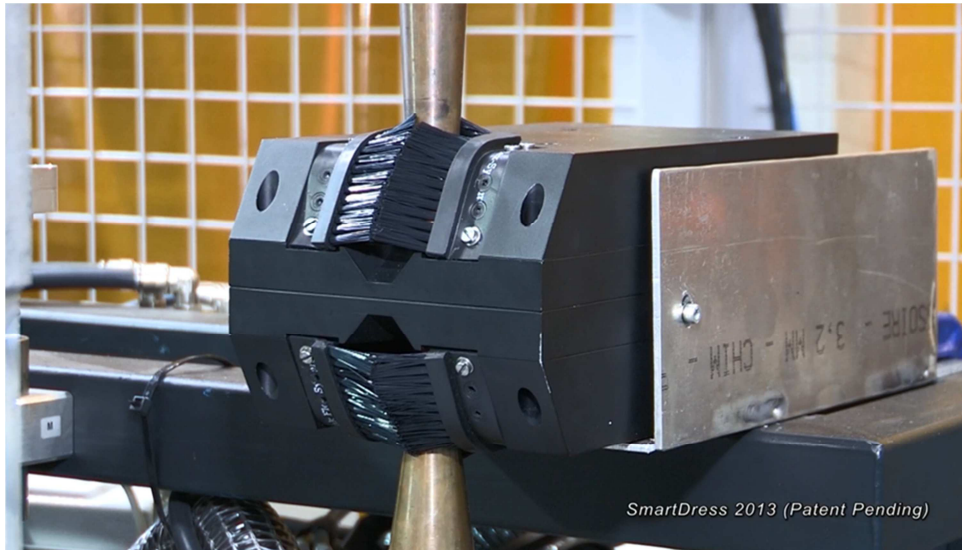
**Figure 6.** The elements of the SmartDress system



**Figure 7.** Example of timings in a spot welding production cell



**Figure 8.** Drawing of the optical sensor and electrode position during measurement.



**Figure 9.** Electrode tip measurement by the optical sensor

**Production Set-up**

Operation

Mode:

Error handling:

☐ Dress and measure between each assembly

Estimated transfer time:

Production settings

Material:

Welds per assy:

Assy transfer time:  (seconds)

Gun information

Electrode type:

Skew angle

Upper:  (degrees)

Lower:  (degrees)

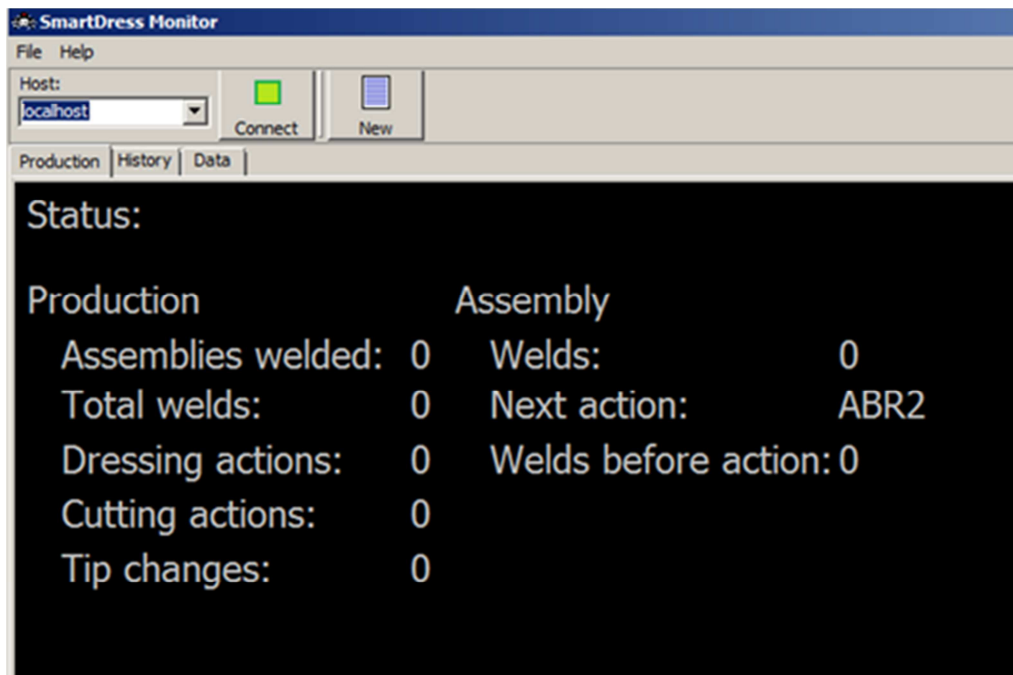
Manual settings

Assemblies	Action
2	Abrade 2
6	Cut
60	Tip Change

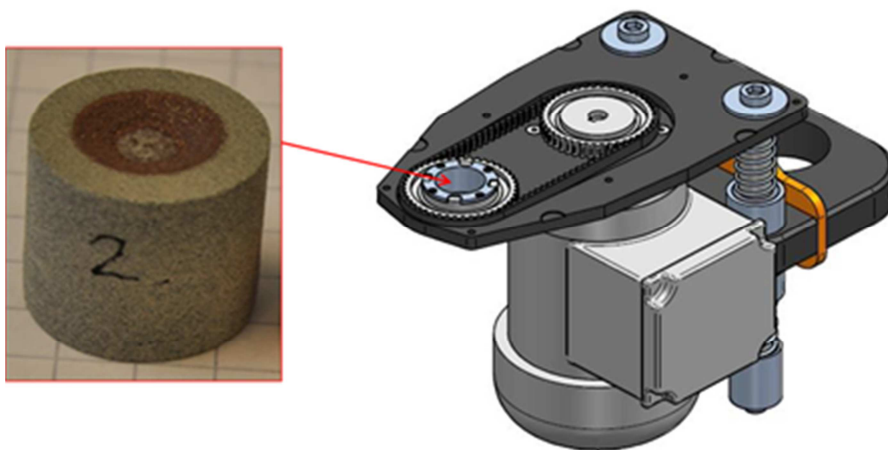
Add Edit Delete

OK Cancel

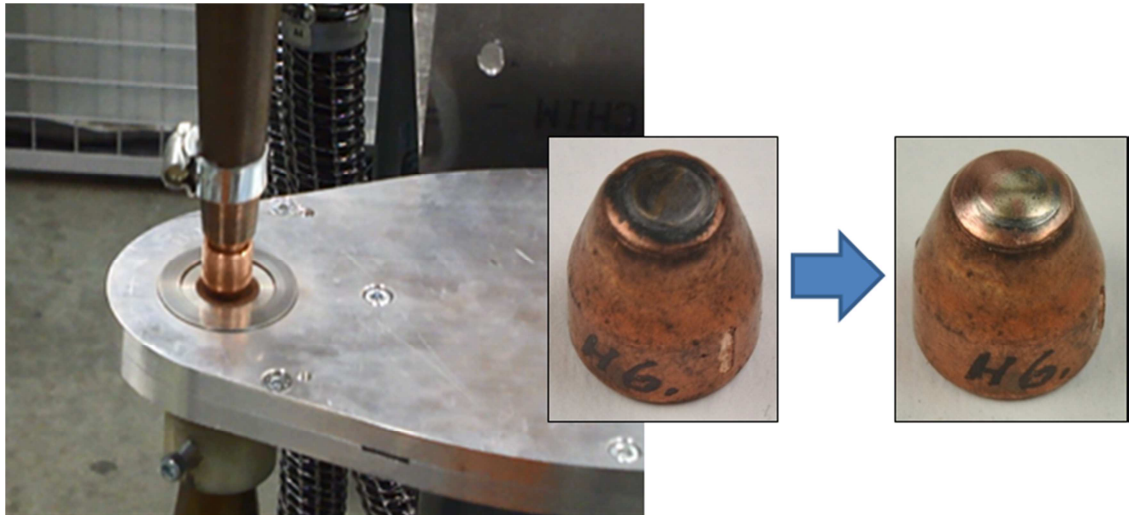
**Figure 10.** GUI Production set-up window.



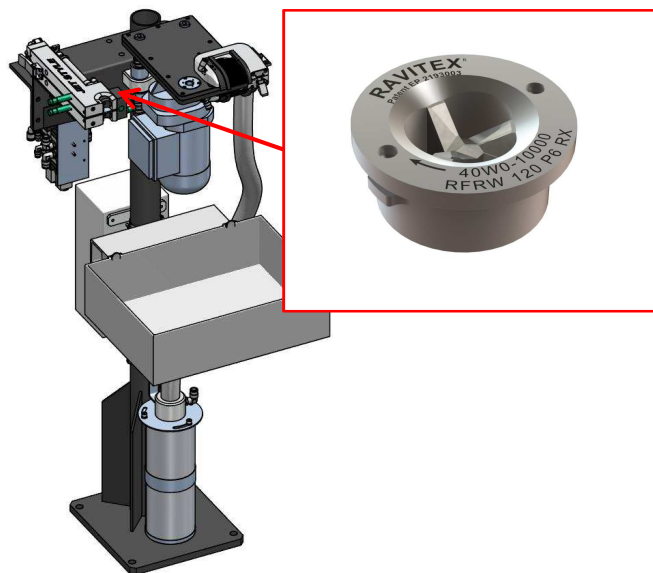
**Figure 11.** GUI SmartDress monitor window.



**Figure 12.** Abrasive dresser subsystem; abrasive insert and technical drawing of the dresser.

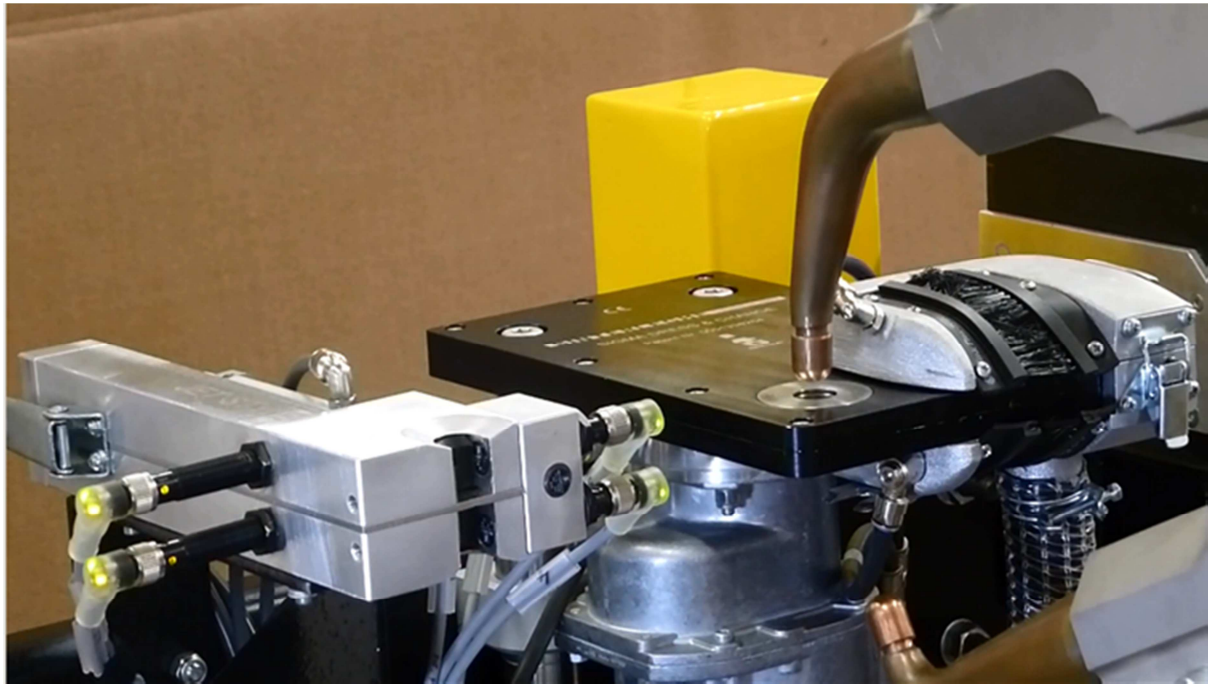


**Figure 13.** Abrasive dressing in action



**Figure 14.** Technical drawing of the Sinterleghe mechanical dresser station and a Ravitex® dressing (cutting) insert.





**Figure 15.** The Sinterleghe electrode tip changer. Left side: Tip magazine feeder, right side: electrode tip removal tool.



**Figure 16.** The SmartDress system in operation

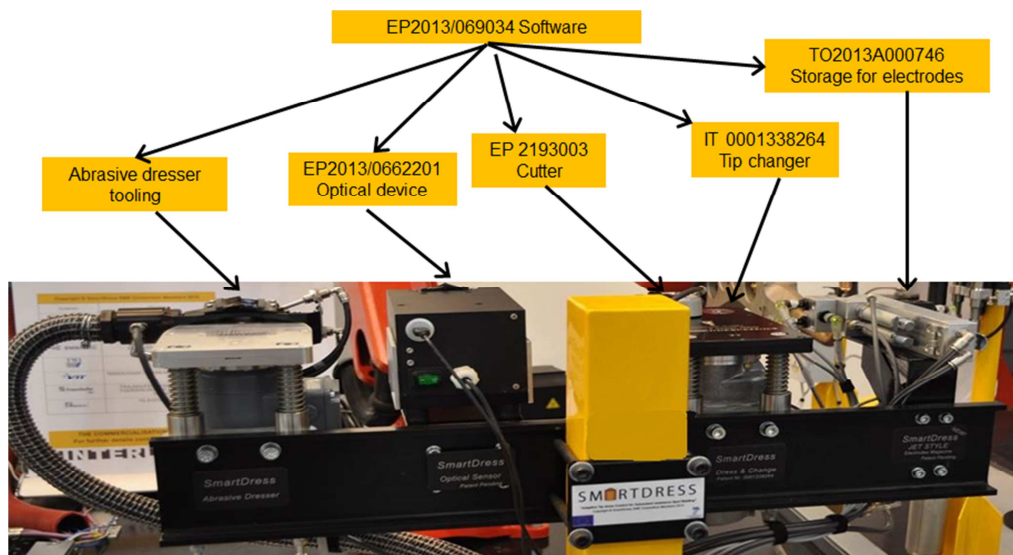


Figure 17. The SmartDress system and all relevant foreground and background IP.

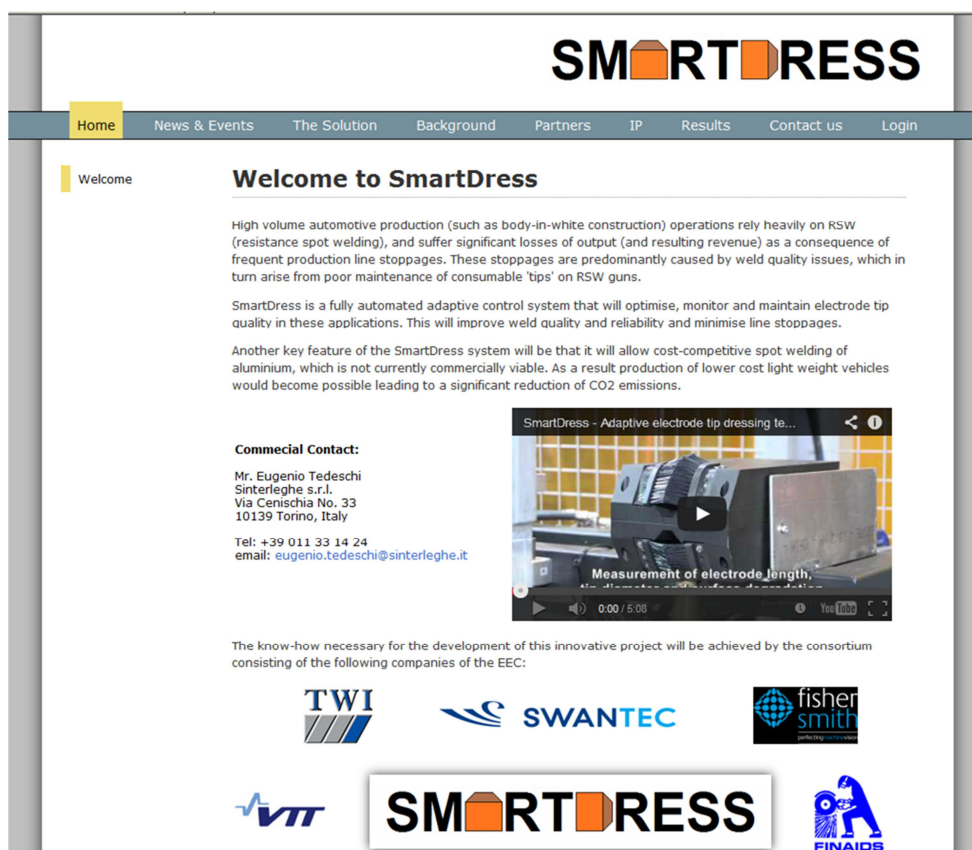


Figure 18. Project website home page.