



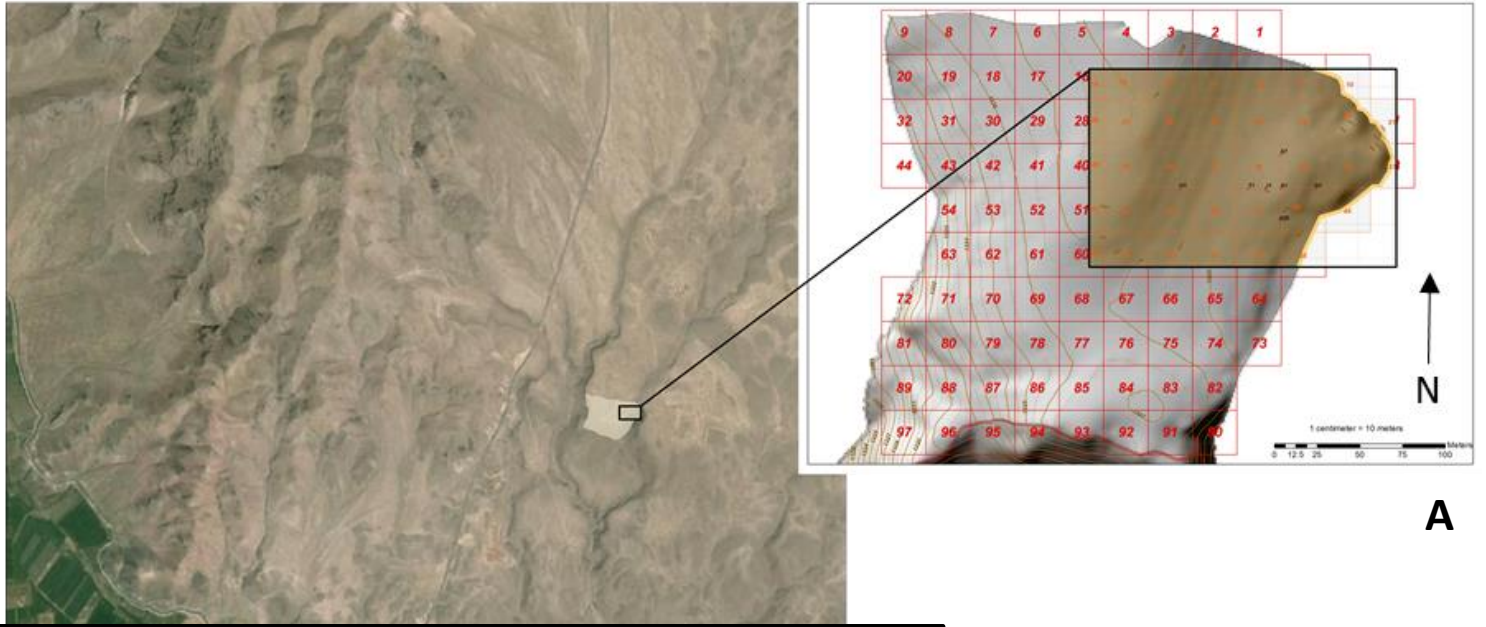
Figure 1. Location of the Barozh 12 site, viewed from the northwest, showing the plateau setting and Ararat Depression including Mt. Ararat



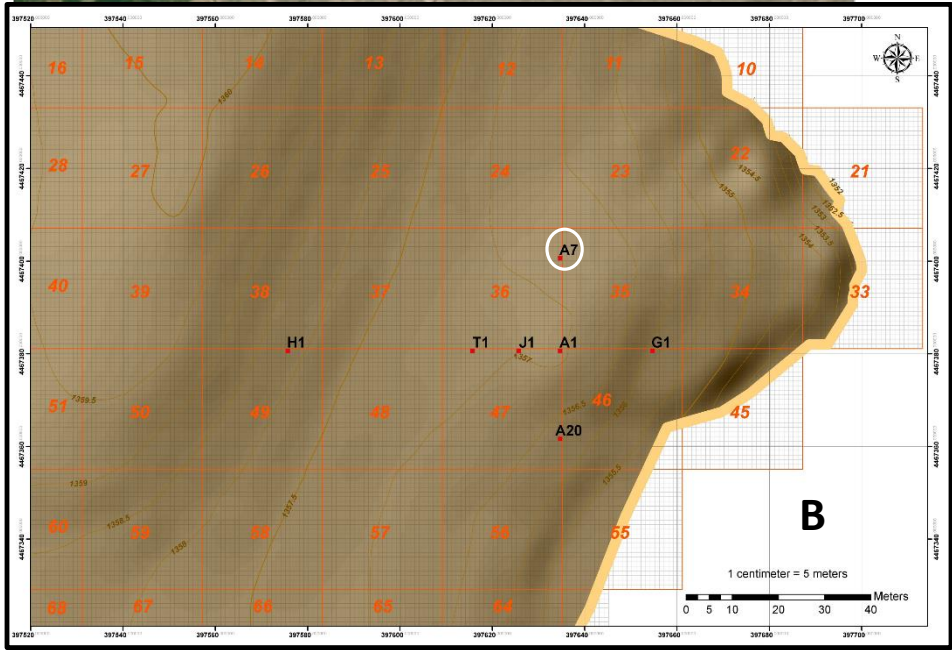
Figure 2. Location of the Barozh 12 site and plateau viewed from the North. Yellow area indicates c. 6000 m² area of artifact dispersion



Figure 3. High density of obsidian artifacts on the surface of the site of Barozh 12 at the main excavation area (black shiny stones)



A



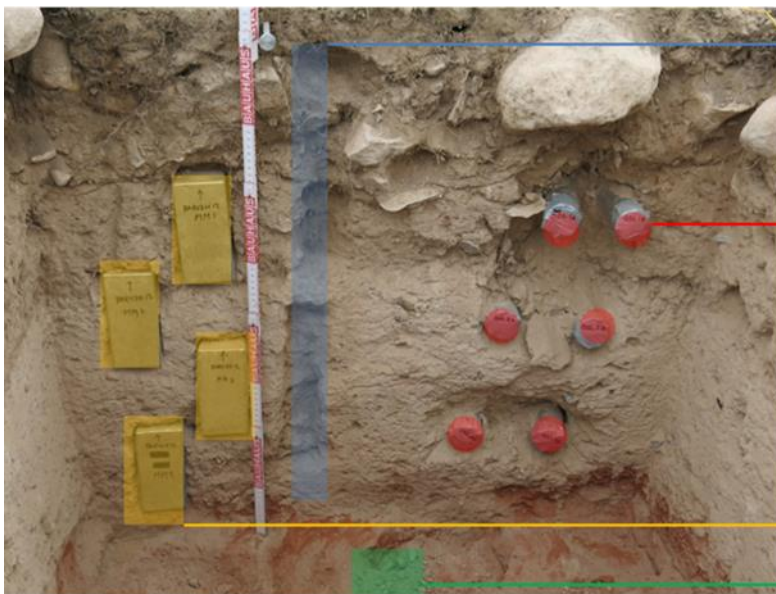
B



C

Figure 4. Overview of the Barozh 12 site, with insets showing topographic map of the locality (A), excavation area with grid measurement system and locations of excavation squares (B), and example of preserved stratigraphy from the south section of square 36A7 (circled) (C)

36A7 (SOUTH)



Granulometry,
Mineralogy,
Palynology, Phytoliths

OSL

Soil
Micromorphology

Ar/Ar

Figure 5. South section of square 36A7 showing locations and description of sediment samples

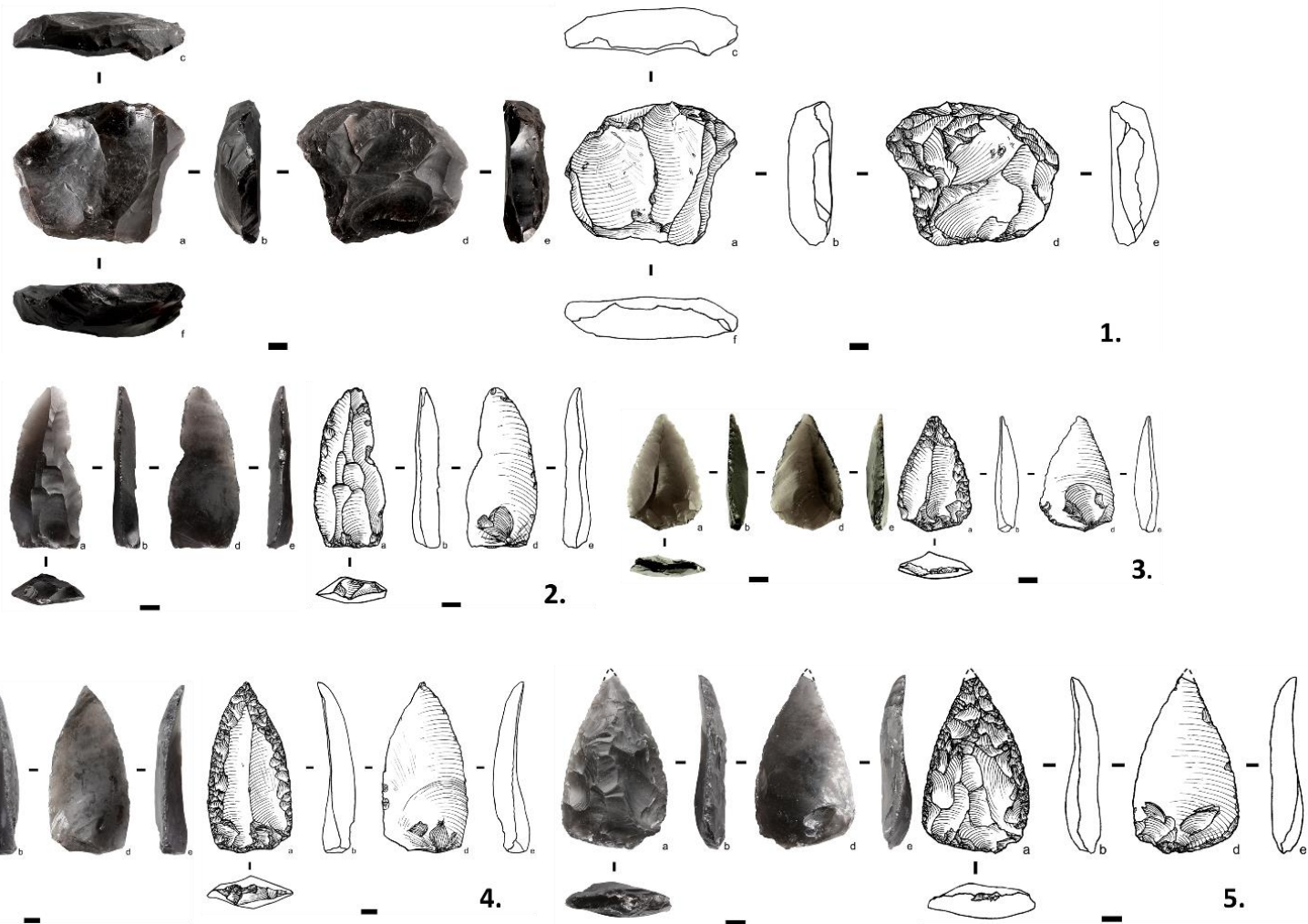


Figure 6. Selected obsidian artifacts from the Barozh 12 excavation: 1. Unidirectional-convergent Levallois core; 2. Levallois point (elongated); 3. And 4. Retouched Levallois points; 5. Mousterian point (scale bars = 1 cm)

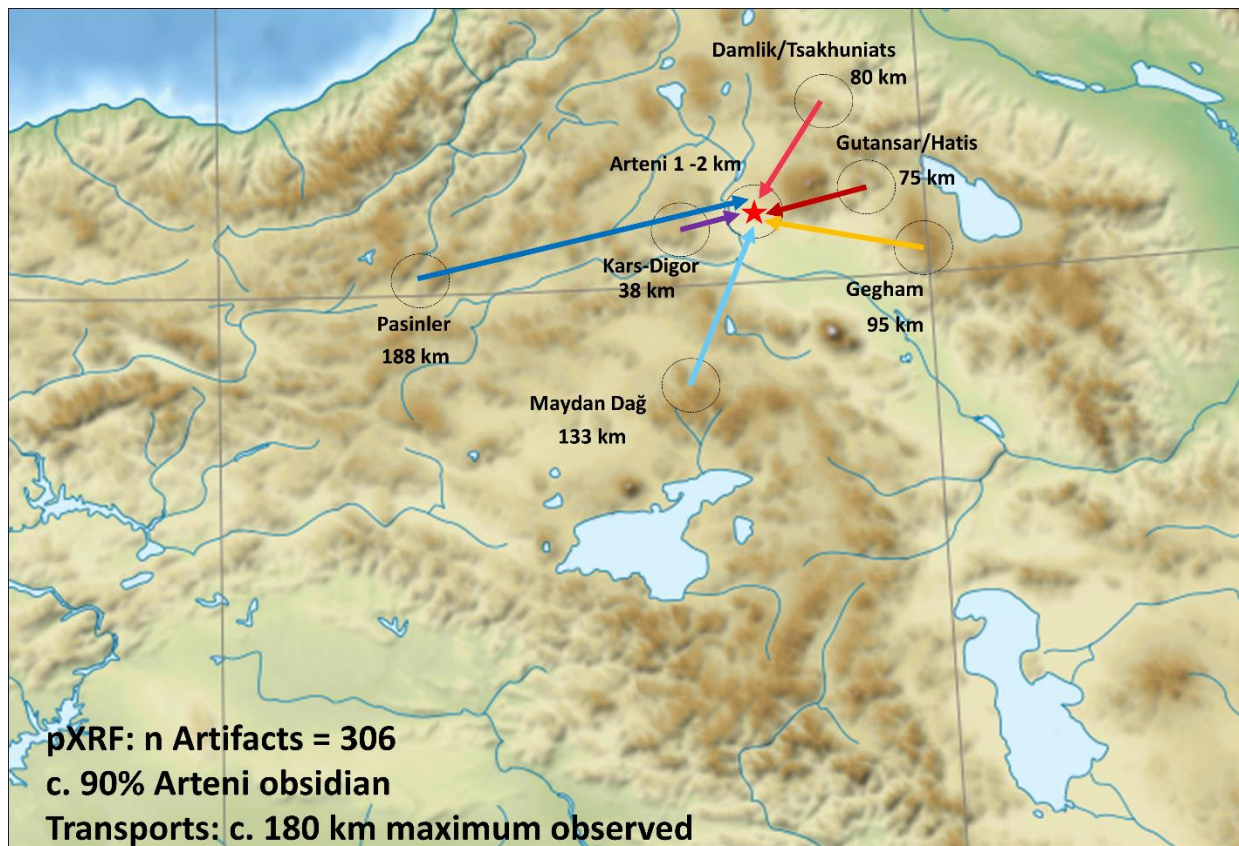


Figure 7. Relief map of the research area, showing major rivers, lakes, and obsidian raw material transport distances from source areas to Barozh 12 (red star).