

Two annual calls are published
(submission in April and October).

It would be a shame missing this opportunity,
wouldn't it?



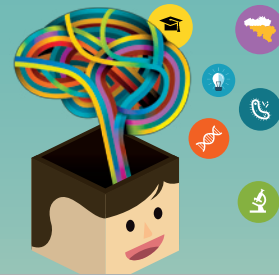
Do you want to know more about it?

Have a look at www.bewarejobs.be
or contact the programme managers

pierre.demoitie@spw.wallonie.be / 32 (0)81 33 45 40
alexandra.lacroix@spw.wallonie.be / 32 (0)81 33 45 51



Do you need a researcher?



**A SME
without scientific staff
or a closed minded
university
doesn't exist!**

BEWARE Fellowships is the new researchers' mobility programme in Wallonia. It promotes their integration into the Walloon academic and industrial world.

To help you to build your team, a budget of 35 million € is now available.

The fellowship includes the salary of the researcher for a stay that may vary from 18 to 36 months. It also covers expenses linked to equipment of the host unit.

According to your expectations, two solutions are offered: **BEWARE Industry** or **BEWARE Academia**.

In the first case the innovation process will be encouraged; in the second, technological transfer.

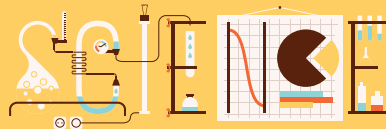


Whatever formula you choose, there will always be a solution to your needs.

Either the **SME** hosts the researcher for a fulltime job (**BEWARE Industry**) or, **under contract with a university**, the researcher spends 25% of his time in a **SME (BEWARE Academia)**.

Two annual calls are published
(submission in April and October).

It would be a shame missing this opportunity,
wouldn't it?



Do you want to know more about it?

Have a look at www.bewarejobs.be

or contact the programme managers

pierre.demoitie@spw.wallonie.be / 32 (0)81 33 45 40

alexandra.lacroix@spw.wallonie.be / 32 (0)81 33 45 51



Do you need a researcher?



**A SME
without scientific staff
or a closed minded
university
doesn't exist!**

BEWARE Fellowships is the new researchers' mobility programme in Wallonia. It promotes their integration into the Walloon academic and industrial world.

To help you to build your team, a budget of 35 million € is now available.

The fellowship includes the salary of the researcher for a stay that may vary from 18 to 36 months. It also covers expenses linked to equipment of the host unit.

According to your expectations, two solutions are offered: **BEWARE Industry** or **BEWARE Academia**.

In the first case the innovation process will be encouraged; in the second, technological transfer.



Whatever formula you choose, there will always be a solution to your needs.

Either the **SME** hosts the researcher for a fulltime job (**BEWARE Industry**) or, **under contract with a university**, the researcher spends 25% of his time in a **SME (BEWARE Academia)**.