



# Information & Communication Technology Labs

**Magnus Madfors**  
Ericsson, R&D Director  
EIT ICT Labs Executive Board

# European Institute of Innovation and Technology

New EU instrument for promoting innovation in Europe

- Legally established in 2008 as an independent agency within the EU
- Governing board with 18 members

Funds “Knowledge and Innovation Communities”, KICs

- Official call and selection of 3 KICs during 2009

Three proposals were selected in December 2009:

- In the ICT field - EIT ICT Labs
- In the Energy field - KIC Innoenergy
- In the Climate field - Climate-KIC

KICs fully operational in October 2010

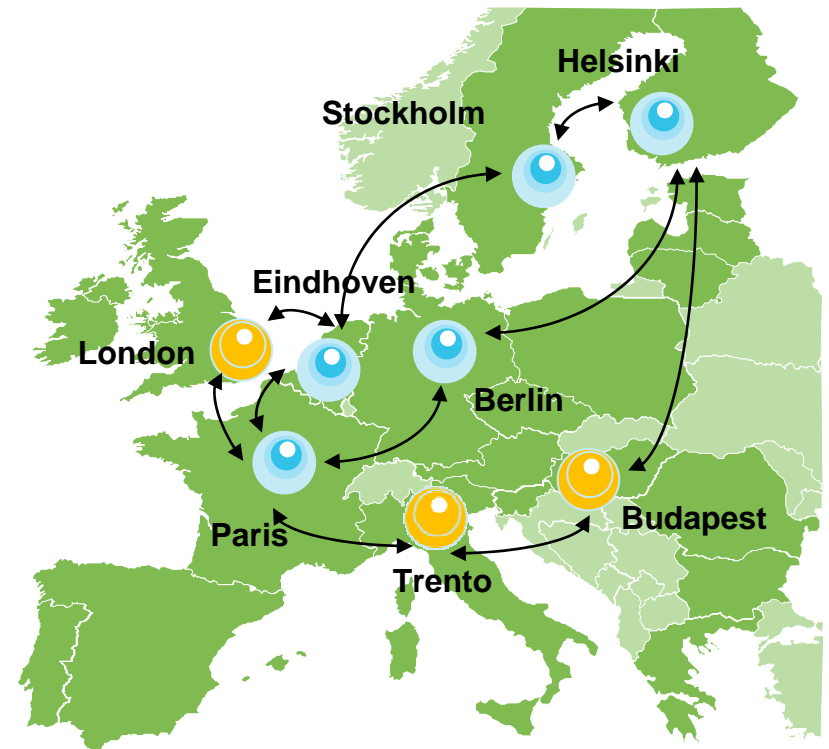


# EIT ICT Labs Vision and Mission

EIT ICT Labs will turn Europe into the global leader in ICT Innovation

EIT ICT Labs aims at

- Radical transformation of Europe towards a knowledge-based society
- Turning ICT innovation into quality of life



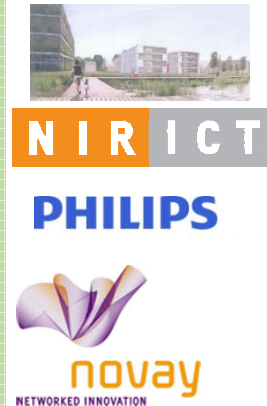
# EIT ICT Labs - Strong European Partners

## Complete and complementary world-class innovation nodes

### Berlin



### Eindhoven



### Helsinki



### Paris



### Stockholm

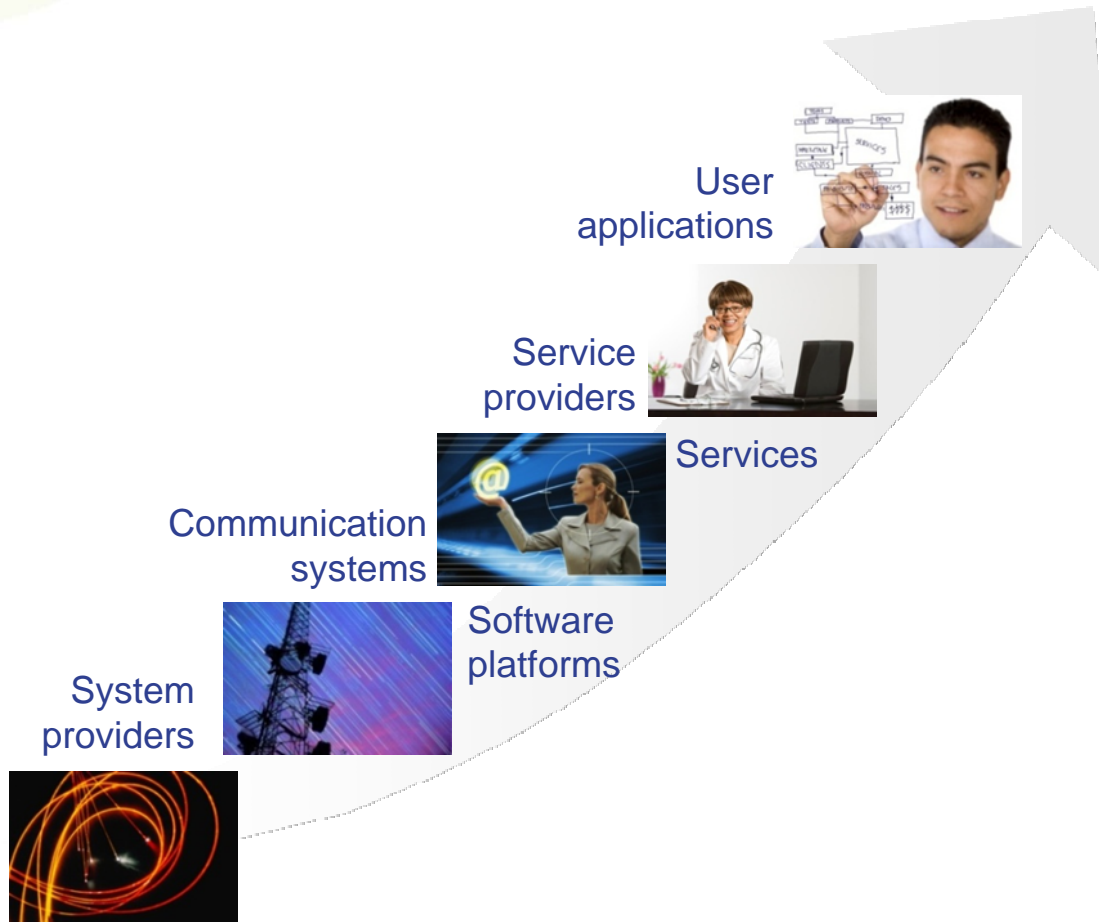


+  
Associate clusters in Budapest, London, Trento  
Systematic build-up of ICT Labs beyond the initial nodes

#### ► Each node features at least:

- One strong research institute
- One major university
- One European-based multinational company
- Active regional network of SME
- Full national and regional support

# Tangible impact for Europe

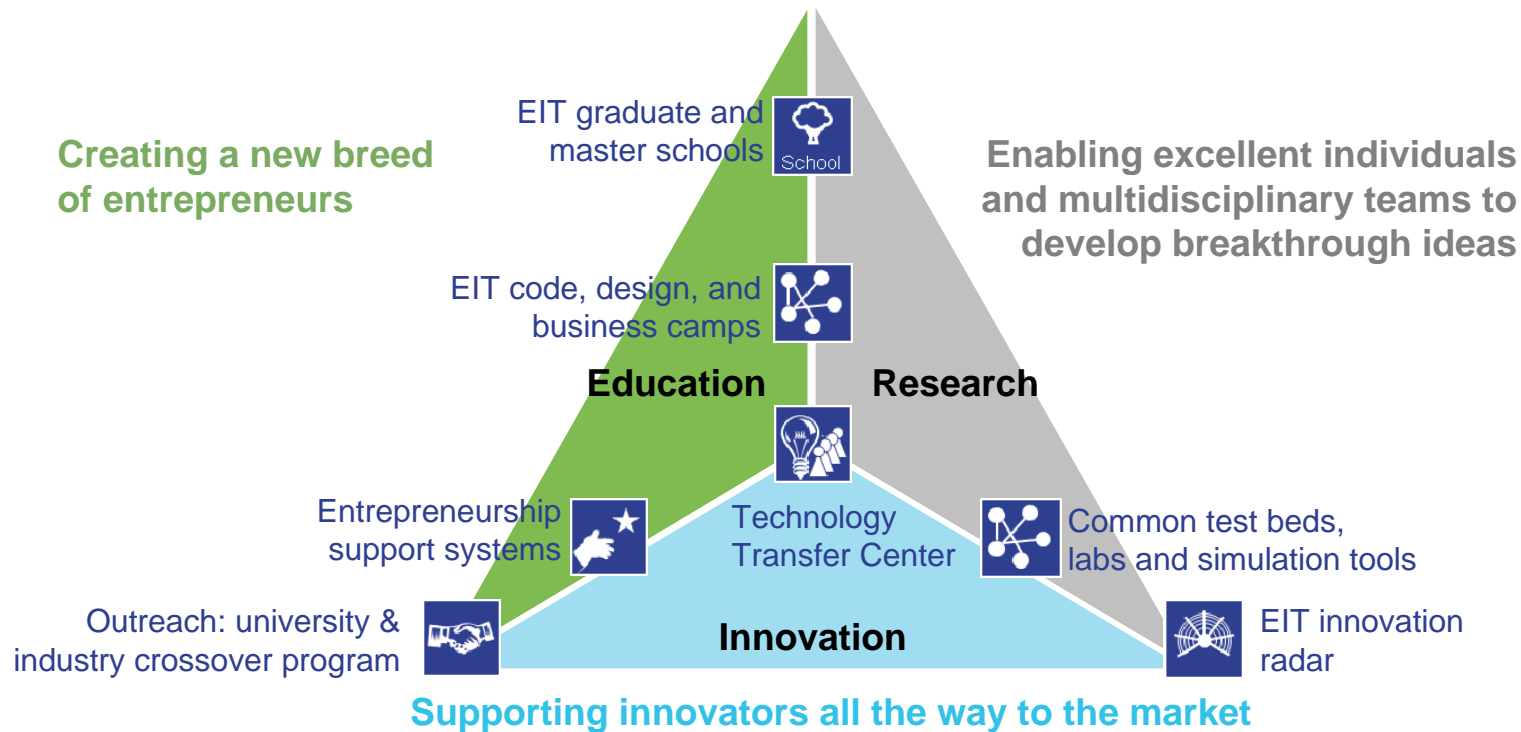


- Meeting Europe's grand challenges**
- **Health** and well-being for an **ageing population**
  - **Individual mobility** and user empowerment
  - **Sustainable development** through efficient energy and resource utilization
  - Enabling social interaction in an **open society**

▶ Providing tangible results to the everyday life of European citizens



# EIT ICT Labs Knowledge Triangle

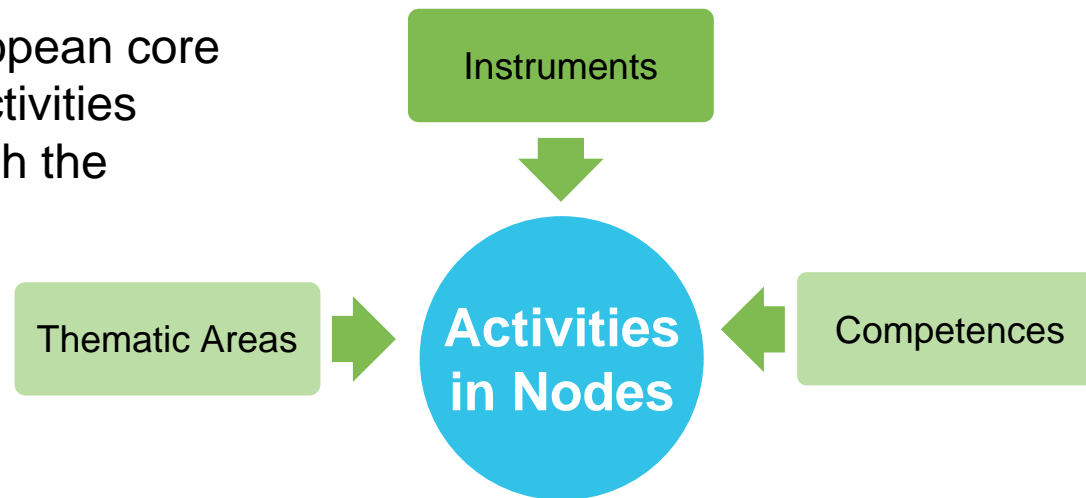


## KPIs

- EIT labeled graduates and PhDs
- Mobility of students and researchers
- Products evolved from research concepts; concepts prototyped on common test beds
- Awards
- Start-ups with global impact
- Cross-licensing
- Value created by transfer projects

# Effective Approach through Instruments

- EIT ICT Labs works through instruments
- Instruments are innovation catalysts
- Instruments are employed to drive innovation in the thematic areas
- Instruments enable the efficient execution of activities and often integrate Education, Research and Innovation
- Building on our European core competences the activities are executed through the collaborating nodes



# EIT ICT Labs - Thematic Areas

## Thematic areas

- **Smart Spaces**  
including service-centered home
- **Smart Energy Systems**  
smart energy management, Green ICT
- **Health & well-being** including ambient assisted living,  
digital medicine
- **Intelligent Transportation Systems** novel forms of safer &  
sustainable traffic and transportation systems
- **Future Media and Content Delivery**  
entertainment, education, accessing media
- **Digital Cities**  
towards intelligent and sustainable digital cities

# Instruments to be implemented

Education Instruments	Research Instruments	Innovation Instruments
<p><b>Graduate School</b> with specialization matching the areas of excellence of nodes and inter-node mobility</p>	<p><b>Thematic workshops</b> Consolidate goals and create networks</p>	<p><b>Entrepreneurship Support Systems</b> mentoring, coaching, incubation, ...</p>
<p><b>Master School</b> which has an emphasis on hands-on entrepreneurship &amp; mobility across nodes</p>	<p><b>Thematic area coordination</b> To facilitate creating added value to chosen thematic areas</p>	<p><b>EIT Innovation Radar</b> including cross-node virtual expert panel</p>
<p><b>Schools and Camps</b> such as code camp (SW developm.), design camp (product design) and business camps (venturing)</p>	<p><b>Common testbeds, Labs &amp; simulation tools</b> including experience, design &amp; mobile labs</p>	<p><b>Best-Practice Benchmarking</b> for designing KIC management</p>
<p><b>Outreach Program, Continuous Training and Embedded Learning</b> both for stake holders &amp; non-stake holders incl. professional doctorate</p>	<p><b>Research dissemination &amp; networking</b> including books, technical reports, DB</p>	<p><b>Business and Entrepreneurs Club</b> including Unconferences</p>
<p><b>Mobility Program</b> teacher and student mobility</p>	<p><b>Mobility program</b> including academia &amp; industry crossover program</p>	<p><b>Access to finance</b> ensure capital availability for all stages</p>
	<p><b>Top talent playing field creation</b> for attracting top talent</p>	<p><b>Pre-Venture Loans</b> to identify and polish innovation</p>
	<p><b>Core research</b> target thematic innov. in chosen areas</p>	<p><b>Office Space 2.0</b> create common office infrastructure for the EIT ICT Labs Co-Location Centers</p>
	<p><b>Big Joint Idea Projects</b> drive risky ideas with high innovation potential (start 2012)</p>	<p><b>Technology Transfer Center</b> push research results towards commercialization</p>



Thank you  
for your attention!