

 Zawartość zarchiwizowana w dniu 2024-04-30

New diagnostic system for specific and fast detection of multiple nucleic acid mutations by PNA hybridization on an array sensor

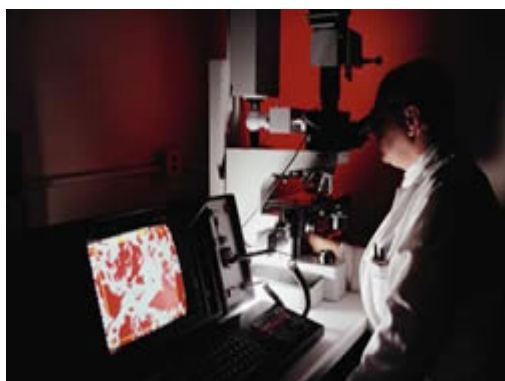
Wyniki w skrócie

Detecting genetic abnormalities in real time using fluorescence

Current molecular biological research focuses on examining nucleic acid coupling and detecting any abnormalities. A new detection scheme has been developed in this area that allows numerous coupling events to be monitored simultaneously, and abnormalities to be detected in real time using fluorescence.



ZDROWIE



© Photodisc

Our genetic make up, or DNA, consists of nucleic acids, coupled together with partner nucleic acids to form two chains, which are bonded together in the famous double helix structure. Genetic problems arise when these coupling reactions do not take place as they should. Present diagnostic systems used to detect any gene deformities, focus on coupling such nucleic acids with a probe nucleic acid, to create a hybrid. The probe contains some form of indicator or label, often a dye, which

will allow the hybrid to be monitored and any abnormalities to be detected.

Unfortunately this type of hybridization is limited with regard to sensitivity, specificity, complexity, hybridization conditions and the need for prior probe labelling.

A new method of detecting abnormalities involves monitoring these hybrid reactions in real time. DNA molecules are attached to a gold-coated glass chip, which is then mounted onto a surface plasmon microscope and coupled to a flow through cell. The complementary acids, which are labelled with specific dye, are then passed through this flow through cell. The system is excited to a higher energy, and if the acids couple successfully, the extra energy is released. This fluorescence energy can be monitored on-line with a suitable imaging optical and very sensitive CCD camera.

This system allows the parallel monitoring of simultaneous binding events. The images are transferred to a computer and image analysis software routines allow the coupling reactions to be quantified, their rates determined, and a single mismatch can be easily detected.

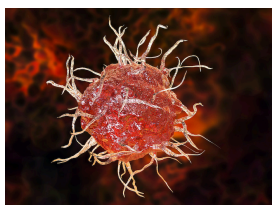
This novel system has been proved in principle. Industrial partners are now being sought to assess applicability of the on-line chip read-out scheme.

Znajdź inne artykuły w tej samej dziedzinie zastosowania



Are there really bacteria in the womb?

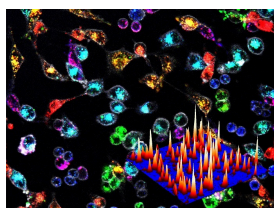
8 Lutego 2023



Improving our understanding of the body's immune response

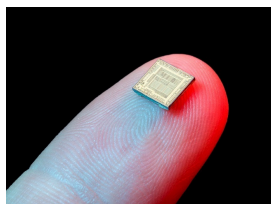
26 Czerwca 2020





Let there be light – and lots of it – for easy biomolecule detection

25 Lutego 2020



Molecular 'fingerprinting' technology that fits on a fingertip

24 Lutego 2020



Informacje na temat projektu

Identyfikator umowy o grant: BMH4961081

Projekt został zamknięty

Data rozpoczęcia

1 Lipca 1996

Data zakończenia

31 Grudnia 2000

Finansowanie w ramach

Specific research, technological development and demonstration programme in the field of biomedicine and health, 1994-1998

Koszt całkowity

Brak danych

Wkład UE

Brak danych

Koordynowany przez

Kobenhavns Universitet



Denmark

Ostatnia aktualizacja: 18 Września 2005

Permalink: <https://cordis.europa.eu/article/id/80768-detecting-genetic-abnormalities-in-real-time-using-fluorescence>

