



Grant Agreement N° 215483

Title: Updated Project Web Portal

Authors: UniDue

Editor: Eric Schmieders (UniDue)

Reviewers: Neil Maiden (CITY)

Identifier: Deliverable #PO-SoE-1.2.9e

Type: Deliverable

Version: 1.0

Date: 04 March 2011

Status: Final

Class: External

Management Summary

This document provides an overview of the of the S-Cube Web portal at Month 36 of the Network of Excellence.

Copyright © 2011 by the S-Cube consortium – All rights reserved.

The research leading to these results has received funding from the European Community's Seventh Framework Programme FP7/2007-2013 under grant agreement n° 215483 (S-Cube).

Members of the S-Cube consortium:

University of Duisburg-Essen (Coordinator)	Germany
Tilburg University	Netherlands
City University London	U.K.
Consiglio Nazionale delle Ricerche	Italy
Center for Scientific and Technological Research	Italy
The French National Institute for Research in Computer Science and Control	France
Lero - The Irish Software Engineering Research Centre	Ireland
Politecnico di Milano	Italy
MTA SZTAKI – Computer and Automation Research Institute	Hungary
Vienna University of Technology	Austria
Université Claude Bernard Lyon	France
University of Crete	Greece
Universidad Politécnica de Madrid	Spain
University of Stuttgart	Germany
University of Hamburg	Germany
Vrije Universiteit Amsterdam	Netherlands

Published S-Cube documents

All public S-Cube deliverables are available from the S-Cube Web Portal at the following URL:

<http://www.s-cube-network.eu/results/deliverables/>

The S-Cube Deliverable Series

Vision and Objectives of S-Cube

The Software Services and Systems Network (S-Cube) will establish a unified, multidisciplinary, vibrant research community which will enable Europe to lead the software-services revolution, helping shape the software-service based Internet which is the backbone of our future interactive society.

By integrating diverse research communities, S-Cube intends to achieve world-wide scientific excellence in a field that is critical for European competitiveness. S-Cube will accomplish its aims by meeting the following objectives:

- Re-aligning, re-shaping and integrating research agendas of key European players from diverse research areas and by synthesizing and integrating diversified knowledge, thereby establishing a long-lasting foundation for steering research and for achieving innovation at the highest level.
- Inaugurating a Europe-wide common program of education and training for researchers and industry thereby creating a common culture that will have a profound impact on the future of the field.
- Establishing a pro-active mobility plan to enable cross-fertilisation and thereby fostering the integration of research communities and the establishment of a common software services research culture.
- Establishing trust relationships with industry via European Technology Platforms (specifically NESSI) to achieve a catalytic effect in shaping European research, strengthening industrial competitiveness and addressing main societal challenges.
- Defining a broader research vision and perspective that will shape the software-service based Internet of the future and will accelerate economic growth and improve the living conditions of European citizens.

S-Cube will produce an integrated research community of international reputation and acclaim that will help define the future shape of the field of software services which is of critical for European competitiveness. S-Cube will provide service engineering methodologies which facilitate the development, deployment and adjustment of sophisticated hybrid service-based systems that cannot be addressed with today's limited software engineering approaches. S-Cube will further introduce an advanced training program for researchers and practitioners. Finally, S-Cube intends to bring strategic added value to European industry by using industry best-practice models and by implementing research results into pilot business cases and prototype systems.

S-Cube materials are available from URL: <http://www.s-cube-network.eu/>

1 Overview of the S-Cube Web Portal

The S-Cube Web Portal is one of the key means for dissemination in S-Cube. The portal is accessible at the following URL: <http://www.s-cube-network.eu/>.

The portal is a web site that publishes the results produced by the S-Cube members, provides access to news and events about the network and provides further information about the S-Cube consortium as well as the activities jointly carried out in the network. In addition to the public pages of the Portal, the S-Cube Web Portal provides a restricted working area, which is only accessible to the S-Cube researchers.

The figure below shows the home page of the S-Cube Web Portal as of Month 36 of the Network of Excellence. The key features presented to the visitors of the portal are highlighted.

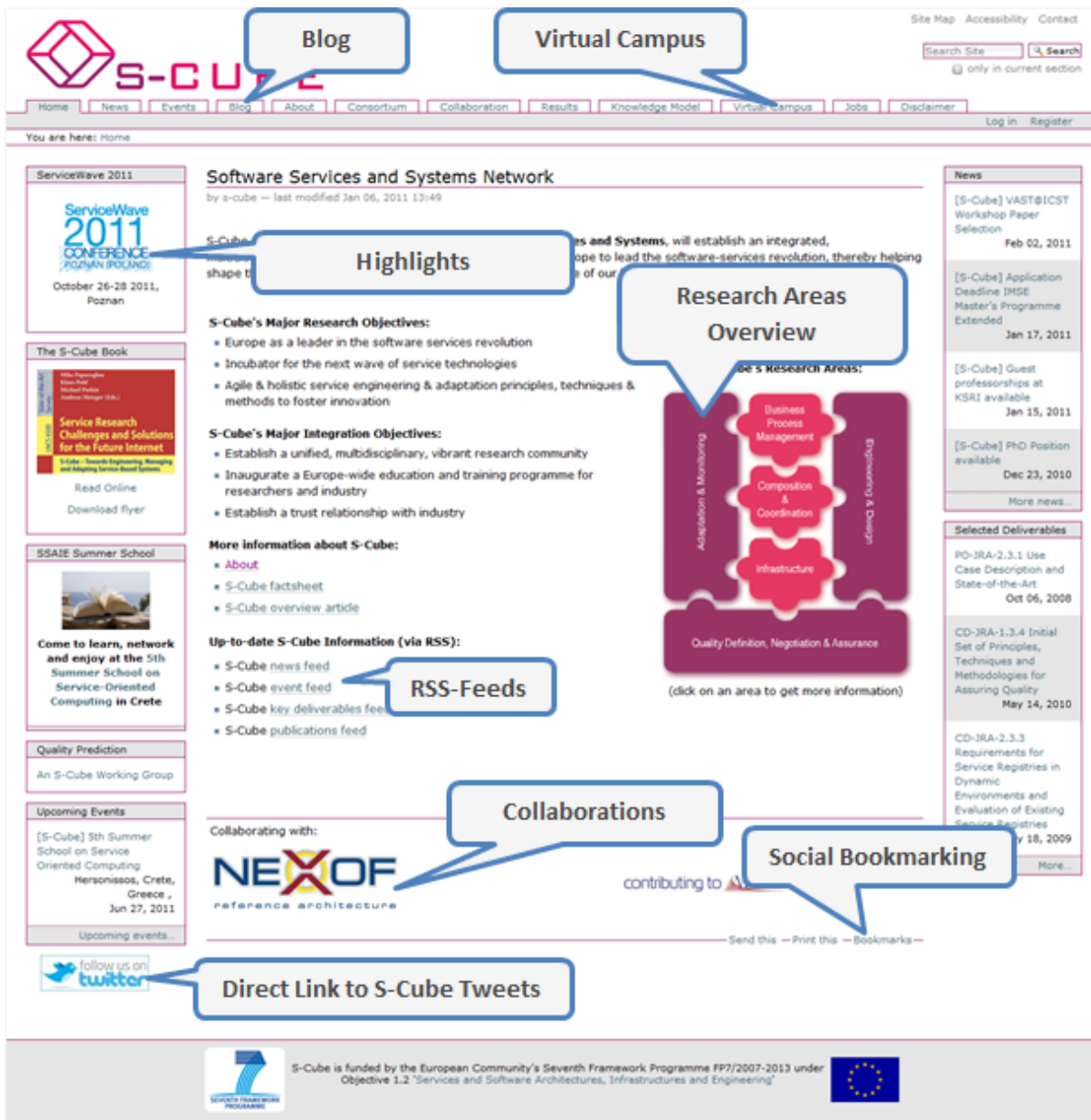


Figure 1: Screenshot of the S-Cube Web Portal (Month 36)

2 S-Cube Web Portal Users

In general, the S-Cube Web Portal supports three types of users, or levels of access:

- **Anonymous users:** have access only to the public pages of the portal
- **Registered users:** have access to all public areas and are also granted access to additional contents: e.g., course modules and newsletter
- **Members,** i.e., people working in the teams of the beneficiaries and associate partners, have the same access as registered users and are also granted access to the private working area.

The following table shows the key performance indicators of the S-Cube web portal:

Date	01-02-2009 – 31/01/2010	01-02-2010 – 31-01-2011	Comparison
Visits	36 099	39 187	+8.55 %
Page Views	156 081	120 327	-22.3 %
Unique Visitors	21 076	24 306	+15.33%
Page Rank	7 out of 10	6 out of 10	-1
Registered Users	259	365	+41%

The data of visits to the website and number of page views, shown in the table above, show a decrease in visits to the website. This could indicate many things, such as the community around S-Cube has forged stronger links and there is more interpersonal communication and sharing rather than through the web portal. Also the Twitter stream could increase the dissemination of S-Cube result but decreases the page views as followers don't need to go to the S-Cube portal to see new news items. It may reflect the fact that in the last year the network has published less deliverables than the previous year, meaning less traffic arriving at the portal to use the working area where deliverables are prepared, edited, finalized and made available to the general public.

However, the number of users registered to use the site increased by over 200% on the year before. This is an indication of the growth of the network, possibly achieved through the recent additions of the associate members.

The decrease in page rank, the 'measure' of relative importance of a website within the set containing the keyword S-Cube, fell one place this year due to the highly popular 2nd International ICST Conference on Sensor Systems and Software, S-Cube 2010 (see <http://www.s-cubeconference.org/2010/>).

3 Update of S-Cube Web Portal

The overall structure of the S-Cube Web-Portal has been created and updated as follows (the items of the column “Portal Area” mostly equates to the Tabbed Navigation items of the web portal navigation):

Portal Area	Up to Month 36	After Month 36
Home	<p>RSS Feeds added</p> <p>Factsheet updated</p> <p>Added an image map with easy access to main research areas</p> <p>Promotion of the S-Cube book</p>	<p>Continuous update</p> <p>Alignment of layout and content of web portal to target audiences – working on a S-Cube Guidepost to provide a “path” through all available content primarily for people who are new to the site</p> <p>Presenting an initial visitor with an overview of the project that will make sense to a "technically illiterate" party</p> <p>Rework the navigation to make it less cluttered (i.e. consolidating different topics or providing drop down menus to make navigation more lucid)</p>
News	<p>Updated regularly (e.g. reports from workshops, conferences and S-Cube events)</p> <p>Publication of Newsletters</p>	Continuous update
Events	Updated regularly (e.g., announcement of S-Cube and related events)	Continuous update
About S-Cube	<p>Update of contents to reflect the closing of the EDSL</p> <p>Target audience scoped and related to relevant content (used in the S-Cube Guidepost mentioned above)</p>	<p>Update planned and addition of:</p> <p>'About Software Services' – a description of services for the layperson, including description of a typical scenario</p> <p>Reworking the section, refining the text, update the graphics to be easier to understand for the layman; Maybe consolidation with “Consortium” in accordance to simplify the navigation</p>
Virtual Campus	Interlink with S-Cube virtual campus (including education and training events, material) (Hier könnte evtl. Jemand mit Ahnung vom VC das ganze etwas ausführen?)	Continuous Update

Collaborations	Ongoing collaborations with ICT and other projects , as well as external parties (including collaboration opportunities)	Provide more information on active collaborations and outcomes
Consortium	Update: Partners Links to portal Adding Associate Members	Continuous update, Adding new members/partners
Results	Update: Deliverables and Publications	Continuous update, constantly adding new content
Knowledge Model	Update of KM	Continuous update, constantly adding new content
Further contents	<p>Blog added</p> <p>Social bookmarking added to help in promoting the websites to different media</p> <p>Created a Twitter-channel and promoted it through the sidebar of the portal to promote the portal</p> <p>Syndication with other portals (via RSS feeds), specifically SSAIE portal</p> <p>Added a new tool to manage publications and added it to the site, instead of just providing a link</p>	<p>Planned, addition of:</p> <p>Information and archive of publicity material (“press room”)</p> <p>Add information to the web portal to make the portal to a one-stop-shop (e.g. List of relevant websites, software tools, registries of software services) – first version of the list added and is currently refined</p> <p>Integration of entry points for target audience (esp. people new to the site) planned (Guide post mentioned above)</p>
'Industry Outreach'	Results of the Industry questionnaire is available online (http://www.s-cube-network.eu/results/deliverables/wp-ia-2.2/PO-IA-2.2.1-Identification-of-Potential-Industrial-Collaborators.pdf/view?searchterm=industry+question)	Dedicated web pages for industry collaboration planned
Working Area	Contains current work packages not yet finished	Continuous update