

DELIVERABLE

Project Acronym: Europeana Collections 1914-1918
Grant Agreement number: 270894
Project Title: Europeana Collections 1914-1918: Remembering the First World War – a digital collection of outstanding sources from European national libraries

- D 3.5** **Final report on numbers of items digitised in the project**
 - D 3.6** **Final report on numbers of items ingested to Europeana in the project**
-

Revision: 1.0
Authors: Ellen Geisriegler, Austrian National Library
 Susanne Tremml, Austrian National Library
 Thorsten Siegmann, Berlin State Library
 Frédéric Lemmers, Royal Library of Belgium

Contributions: all partners

Project co-funded by the European Commission within the ICT Policy Support Programme		
Dissemination Level		
P	Public	x
C	Confidential, only for members of the consortium and the Commission Services	

Revision History

Revision	Date	Author	Organisation	Description
0.1	April 16, 2014	Susanne Tremml	ONB	Initial version
0.2	April 22, 2014	Susanne Tremml	ONB	Updated initial version
0.3	May 5, 2014	Susanne Tremml	ONB	Recommendations of partners incorporated
0.4	May 16, 2014	Susanne Tremml	ONB	Minor changes
1.0	May 23, 2014	Susanne Tremml	ONB	Final changes incorporated

Statement of originality:

This deliverable contains original unpublished work except where clearly indicated otherwise. Acknowledgement of previously published material and of the work of others has been made through appropriate citation, quotation or both.

Table of Contents

1. Executive Summary	4
2. Data Collection and Progress Reporting	6
2.1 <i>Collecting Data and Numbers of Project Partners</i>	6
3. Project Progress to Month 36.....	10
3.1. <i>Selection Progress</i>	10
3.2. <i>Digitisation Progress</i>	11
3.3. <i>Ingestion Progress</i>	16
4. Summary	19
5. Annex I – ‘Digitisation progress monitoring template’	20

1. Executive Summary

This deliverable contains the 'Final report on numbers of items digitised in the project' as well as the 'Final report on numbers of items ingested to Europeana in the project' of Europeana Collections 1914-1918 and shall give an overview - based on the selection of items - of the number of items and objects digitised and ingested in Europeana until the end of the project at the end of April 2014.

The information in it was compiled from all partner institutions with the help of 'Digitisation progress monitoring templates' in paper forms in month 6 (October 2011) and in month 12 (April 2012) of the first project year. After project year one, information on items selected, digitised and ingested were gathered with the help of a collaborative workspace.

To ensure that the progress and processes of the project are correctly documented, comprehensible, and transparent, a 'Digitisation progress monitoring template' was created, discussed, and agreed on by all partners at the Work Package 3 Kick-off Workshop in Vienna on 7th and 8th September 2011. Despite the fact that the monitoring of the selection, digitisation and ingestion progress are concerning two work packages (WP2 and WP3), it was agreed that one unified monitoring template will be used by all project partners. The 'Digitisation progress monitoring template' was slightly adapted after the first internal reporting (MS 10 and MS 16: Statistical report on numbers of items selected/digitised to month 6). A modified blank template was delivered as appendix D3.3 'First report on numbers of items digitised in the project'. To further simplify the documentation and data collection processes for the project partners it was agreed to use the collective workspace platform EditGrid¹ for this purpose.

In project month 36 (April 2014), all partners were asked to update the 'Digitisation progress monitoring template' with their final numbers of items. The information provided by the partners shall be presented on the following pages. Several graphs are included in the deliverable in order to present the documentation in a more descriptive way. All concrete numbers provided by the partners can be found in the 'Digitisation progress monitoring template' attached as an annex to this report.

¹ <https://www.editgrid.com> (platform shut down at 01.05.2014)

No.	Short name	Name	Country
1	SBB/SPK	Berlin State Library / Stiftung Preußischer Kulturbesitz	Germany
2	BnF	National Library of France / Bibliothèque Nationale de France	France
3	BNU&BDIC	National University Library of Strasbourg / Bibliothèque Nationale et Universitaire de Strasbourg Bibliothèque de documentation internationale Contemporaine	France
4	BNCRM	National Central Library of Rome / Biblioteca Nazionale Centrale di Roma 'Vittorio Emanuele II'	Italy
5	BNCF	National Central Library of Florence / Biblioteca Nazionale Centrale Firenze	Italy
6	KBR	Bibliothèque royale de Belgique – Koninklijke Bibliotheek van België / Royal Library of Belgium	Belgium
7	BL	The British Library	United Kingdom
8	KB	Det Kongelige Bibliotek, Nationalbibliotek og Københavns Universitetsbibliotek / Royal Library of Copenhagen	Denmark
9	ONB	Österreichische Nationalbibliothek / Austrian National Library	Austria
10	NLS	Narodna Biblioteka Srbije / National Library of Serbia	Serbia
12	ICCU	Istituto Centrale per il Catalogo Unico delle Biblioteche Italiane e per le Informazioni Bibliografiche / Central Institute for the Union Catalogue of Italian Libraries (ICCU)	Italy

Partner 11, UBER (Humboldt-Universität zu Berlin) does not provide content.

2. Data Collection and Progress Reporting

In the DoW the project consortium has indicated that 425.000 WW1 sources will be made publicly and freely available online via Europeana within the project Europeana Collections 1914-1918. To guarantee and monitor the success of the digitisation project, the partners have agreed on the schedule 'Selection/Digitisation/Ingestion in Europeana' below.

Objective/ expected result	Indicator name	Expected Progress		
		Year 1	Year 2	Year 3
Selection and Digitisation Process				
1. Number of selected items	SELITM	100.000	200.000	350.000
2. Number of digitised items	DIGITM	50.000	150.000	350.000
3. Number of items online in 'Europeana' (including approx. 75.000 items, that have already been digitised outside the project)	EURITM	10.000	100.000	425.000

2.1 Collecting Data and Numbers of Project Partners

The partners' digitisation plans have been described in detail in D3.1 'Synthesis of agreed digitisation plans'. For the collection and reporting of the partners' digitisation progress, a unified 'Digitisation progress reporting template' was created and agreed on by all project members in month 5. To further improve the quality of the collected data, to collect more essential information, and to gain an even better overview of the project progress, a few more columns have been added to the monitoring template during the project.

To simplify the process of data collection for all partners, to avoid confusion and to guarantee constant availability of the latest version of the 'Digitisation progress monitoring template', the project consortium has decided to use the collaborative workspace platform EditGrid². All project partners were given access to a shared 'Digitisation progress monitoring template' on EditGrid and were asked to update their data directly online. Additionally, regular backups of the template have been made during the reporting periods to avoid a loss of data in case of problems with the platform.

The template provided one sheet for each partner institution and one as a summary with the numbers of all content providers.

² <https://www.editgrid.com> (platform shut down at 01.05.2014)

The collaborative online service EditGrid ended with May 1st, 2014, together with the end of the project. All spreadsheets were downloaded and saved in time and kept for reporting. In addition, all tables of the project are provided at the end of this report as Annex.

Content and description of the monitoring template:

Column A (Provider) and B (Last date of reporting) contain the abbreviation of the content provider and the latest date of reporting. For D3.5 and D3.6 the last day of the reporting period was April, 30th 2014.

The project consortium has agreed on seven different source types for the digitisation project:

- Printed books
- Songbooks and sheet music
- Publicistic material
- Maps
- Manuscript material
- Picture material
- Miscellaneous material.

The source types are indicated in **Column C (Source type)**.

All partners were asked to fill in the numbers of each source type according to the DoW into **column D (Proposed source type according to DoW)**.

For organisational reasons, most partner institutions have split up the different source types into subcollections (**Column E – Collection Description**) with the aim to deliver these as subcollections to Europeana. To make it easier for the partners to document their progress in selection, digitisation, and data delivery, various categories for subcollections have been elaborated (following the WP2 'Selection criteria workshop' in June 2011 and the WP3 'Kick-off workshop' in September 2011). The subcollections were optionally extensible by the content providers in case an accurate term could not be found in the provided list.

Source type 1: Printed books

Subcollections: Reference works; Fiction; Light fiction Poetry; Theatre; Children's literature; Military literature, guides manuals; War libraries; Daily life; Travel literature; Historical literature; Religious literature; Financial and economic literature; Political, propaganda literature, Medical literature; Welfare literature; Popular regional literature; others

Source type 2: Songbooks and sheet music

Subcollections: Manuscript music book; Manuscript music sheet; Printed music book; Printed music sheet; Music Journals & periodicals; Other printed materials (folders, concert programs, postcards)

Source type 3: Publicistic material

Subcollections: Newspapers; Other periodicals; Pamphlets and leaflets; Other publicistic material (community newsletters, specials announcements of companies and societies, posters, commemorative announcements)

Source type 4: Picture material

Subcollections: Drawings, sketchbooks; Paintings; Posters; Photographs; Postcards, Poststamps; Medals, coins; Other Picture Material

Source type 5: Manuscript material

Subcollections: War postcards; War journals; Diaries; Letters

Source type 6: Maps

Subcollections: Manuscript maps; Printed maps; Atlas; Other geographic material

Source type 7: Miscellaneous material

Subcollections: Printed letters; Biographies; Reports; Journals; Memoirs; Episodes; Other

In **column F (Unit of measurement)** all partners had to indicate the unit of measurement (e.g. volumes, pages, items, etc.) to enable a transparent counting.

In **column G (Numbers of items foreseen according to DoW)**, the content providers have been asked to indicate the numbers of items foreseen for each subcollection according to the DoW. The total amount of items from the subcollections within one source type should be the same as the number of items related to the source type.

Columns H to J: NUMBER OF OBJECTS like books, songbooks, albums, letters etc:

Depending on different technical ways of providing metadata records and displaying content, as well as differing traditions in the definition of 'objects' between countries, institutions and type of material, the expression 'item' does not necessarily express the same kind of content for each partner. With these newly added categories, the EC1418 partners tried to approach as closely as possible to the Europeana users' view and to count 'objects' like we expect a Europeana user to count them. This is to say, e.g. independently, whether one partner provides 256 metadata records for each page of a book or one single metadata record comprising 256 pages, these 256 'items' will be counted as '1 book' at this category. The opposite way is true as well. Content consisting of e.g. 357 photographs from one unit, provided in 1 metadata record, will be counted as 357 photographs.

Column K (Actual numbers of items to be digitised) has been used to indicate the actual number of items (for each subcollection) to be digitised in the project. These numbers have changed for most content providers during the progress of the project. For many content providers, the figures announced in the DoW for each subcollection were only a quantitative indication. Because the effective selection had to follow the specifications published in Deliverable 2.1 'Specification of the Selection Criteria and Thematic Subcollections applied in the project' and its Annex 1 'Handout', the first estimation has been continuously re-evaluated by most providers. Furthermore, some curators may have discovered new relevant sets of documents which were added in the selection where possible. For this reason, the effective number of items by subcollection has been re-evaluated every six months to reflect the exact progress of the project.

Columns L to S were meant as a **Production Monitoring Summary**, observing the progress of the project. In the columns **L, N, P, and R** the partners have continuously updated the numbers of items they selected, digitised, made ready for harvest and ingested in Europeana at the end of each particular reporting period, while the percentage of the respective numbers has been automatically calculated in the columns **M, O, Q, and S**. As the work package leaders have discovered a sometimes quite high difference between the numbers of items already digitised and the numbers of items actually ready for harvesting, the project management decided to add a column 'ready for harvest' to the progress reporting template. The information provided in this column was intended to improve the planning of the data ingestion processes to Europeana. The number of items 'ready for harvest' was perceived as indicator for those items which were digitised and available with the full set of metadata.

The collection of information about controlled vocabulary and metadata has been extended with columns **T to X**. The partners have been asked to indicate whether they were planning to use any controlled vocabulary to provide information about the item on a certain level. This referred to the

support of any kind of normative data in the metadata, but especially to the minimal vocabulary developed in the Europeana Collections 1914-1918 project: A list of WW1 subjects and objects has been set up and validated by the partners as a common classification of content. Based on four questions (What as subject? What as object? plus Who? and When?), this classification should facilitate the matching of the collections and the filtering of the results in the Thematic Portal. Each partner decided whether to enrich its metadata with this information or not and indicated it here.

The next **columns (Y to AC)** have been provided for indicating '**Format and Quality**' of the master and access copies and for giving information about plans for **OCR**.

The partners stated the metadata formats of each subcollection in **column AD (Metadata)**. As the number of scans might vary from the number of items (in case of newspapers, brochures, books, etc.) **column AE** has been provided for specifying the definite number of scans.

3. Project Progress to Month 36

The following chapters will give an overview - based on the selection of items - of the digitisation and ingestion progress of the project Europeana Collections 1914-1918 at the end of its third year (April 2014). All partners have continued their work started in year one, finalised selection in year three and continued with digitising their material. This has happened according to the DoW either by subcontracting to external partners, by digitising in-house or by combined solutions (Deliverable D3.1). All partners have continued or started successfully ingesting data in Europeana during the second project year and finalised this procedures in the last project months in year three.

3.1. Selection Progress

To present the items digitised and ingested it is necessary to shortly summarise the selected corpus on which the items digitised and ingested base.

By April 2014, all partners have successfully carried out their **selection of items** to be digitised within the project. According to the DoW, 425.000 items should have been selected in the third project year. **As in the previous project years, the project partners have been more ambitious with their selection than in the initial plan and 485.314 items in total have been chosen by month 36.**

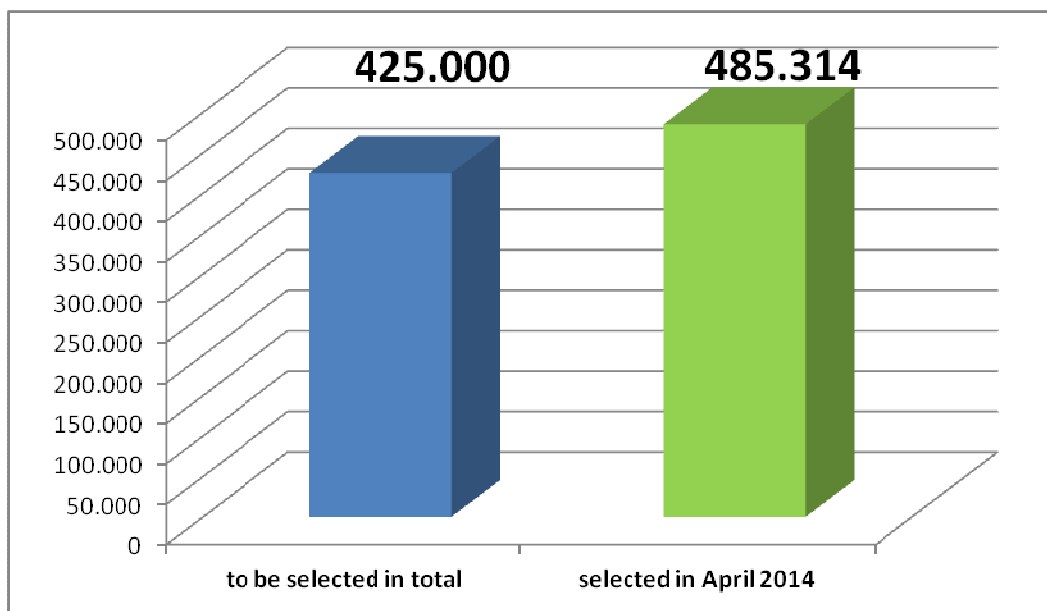


Figure 1: selection at the end of the project

These **485.314 items** represent **116%** of the total amount of items to be selected within the entire project. Almost all partners **indicated that they would select more items than initially planned, so it was foreseeable that the project goal according to the DoW would be exceeded.**

Further information about the details of the selection process are described in Deliverable D2.2.

3.2. Digitisation Progress

By April 2014 all **partners have successfully digitised their collections**. According to the DoW, 425.000 items should have been digitised at the end of the third project year. Again, the project partners have been more ambitious with the digitisation than intended. **485.314 items in total have been digitised by month 36** with the same amount of budget.

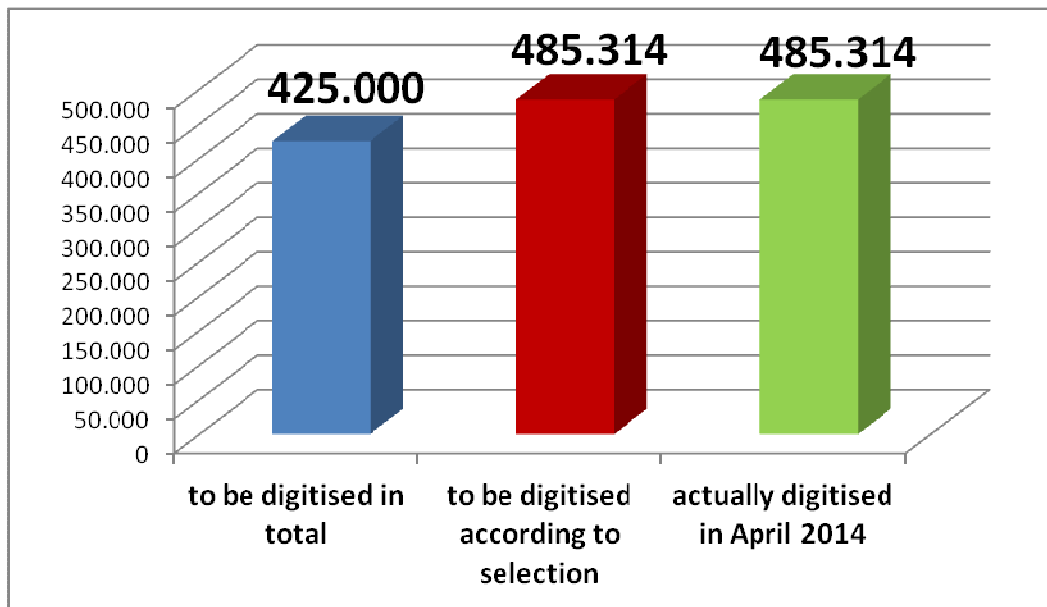


Figure 2: digitisation plan and progress until year 3

These **485.314 items** represent **116%** of the total amount of items to be digitised within the project. **As almost all partners have indicated that they would digitise more items than initially planned, it was foreseeable that the project goal according to the DoW would be exceeded as well.** All partners have digitised the material they have indicated in the selection process of the project.

The next diagram shows the digitisation effort of each project partner. The partners have digitised the following material:

- SBB 7.137 items
- BNF 47.897 items
- BNU&BDIC 74.029 items
- BNCRM 5.579 items
- BNCF 3.892 items
- KBR 15.027 items
- KB 8.660 items
- BL 9.829 items
- ONB 80.030 items
- NLS 2.066 items
- ICCU 231.168 items.

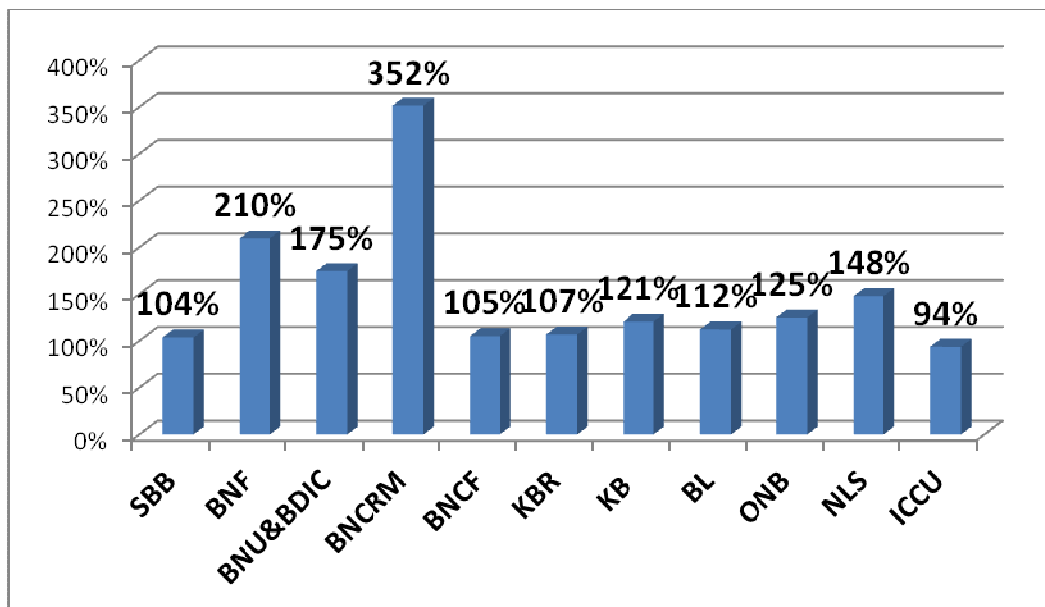


Figure 3: digitisation effort until year 3

Almost all partners delivered **more than 100% of the items** promised according to the DoW and in most cases even more. BNCRM high digitisation number is a result of their selection process. As they were able to select more items for Europeana Collections 1914-1918 than initially planned, they were able to digitise more material as well. After a process of re-evaluating and re-structuring their indicated content list, as well as an amendment, BNF was able to digitise 210% of what was indicated in the DoW. Partners BNU&BDIC also realised after their selection process, that they were able to contribute more to the project than initially planned. The same is true for NLS who provide in the end almost one half more than initially intended.

Partner ICCU discovered in the final project year that its provision of items slightly differs from the rest of the project partners and realised a discrepancy in its already digitised material. ICCU's content list was based on the provision of archival records representing items. Additionally, it was discovered that the already digitised material was less than originally assumed. Together with ICCU the Executive Board took actions to go into detail of the records, items and objects to harmonise the indication of items with respect to the items counting of the rest of the project. For this reason ICCU provides in terms of items 94% of what was initially planned according to the DoW, representing 231.168 items.

According to the DoW, ICCU had to provide both, items digitised during the project as well as items digitised before the project. That is why it was evaluated how many items were already digitised before the beginning of the project and how many items have been digitised within the project. According to the DoW ICCU should provide 246.600 items. Subtracting the already digitised material (21.000 pages of periodicals + 40.600 items of picture material) 185.000 items were remaining for digitisation. Actually, partner ICCU digitised within the project 195.208 items, thus having 106% digitised.

The following graph illustrates what was digitised within the project without the already digitised material from ICCU and BDIC (13.175 items):

- SBB 7.137 items
- BNF 47.897 items
- BNU&BDIC 60.854 items
- BNCRM 5.579 items
- BNCF 3.892 items
- KBR 15.027 items
- KB 8.660 items
- BL 9.829 items
- ONB 80.030 items
- NLS 2.066 items
- ICCU 195.208 items.

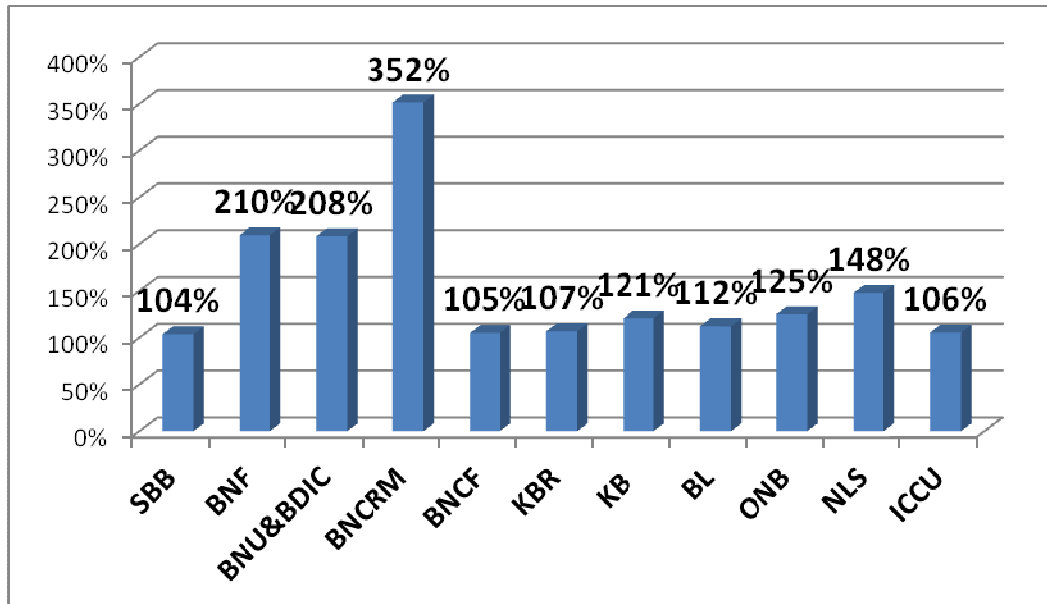


Figure 4: digitisation effort of all content providing partners

This graph illustrates, that all partners digitised within this project what they promised to according to the DoW and over-achieved their goal in having more than 100% digitised.

As a consequence of the realisation, that the project partners had different perspectives of an item, the content providing partners were asked to provide as additional information in the ‘Digitisation Progress Template’ the number of objects they were providing within this project. As stated in chapter 2 ‘The structure of the ‘Digitisation progress monitoring template’’, depending on different technical ways of providing metadata records and displaying content, as well as differing traditions in the definition of ‘objects’ between countries, institutions and type of material, the expression ‘item’ does not necessarily express the same kind of content for each partner.

The evaluation resulted in slightly different numbers, but gave the consortium a clear picture of the nature of the provided items. In total the EC1418 consortium provides **467.084 objects**. The following pie chart is based on this number and gives an overview of the amount of objects and their nature digitised by all partners in total:

- 12.892 printed books
- 1.735 Songbooks and sheet music
- 104.412 objects of publicistic material
- 159.981 objects of manuscript material
- 178.785 objects of picture material
- 1.199 maps
- 8.080 miscellaneous objects.

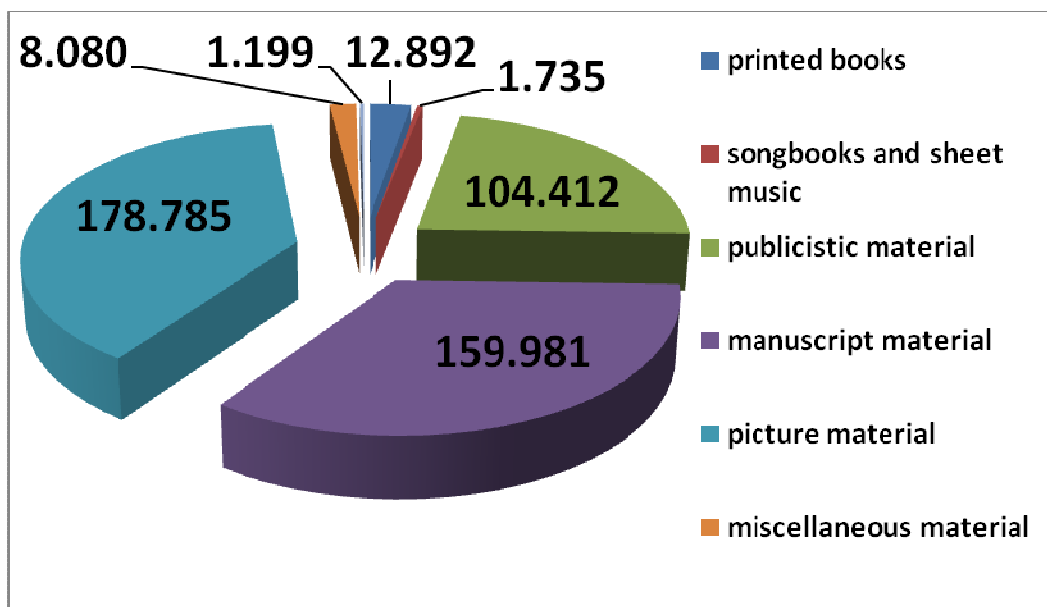
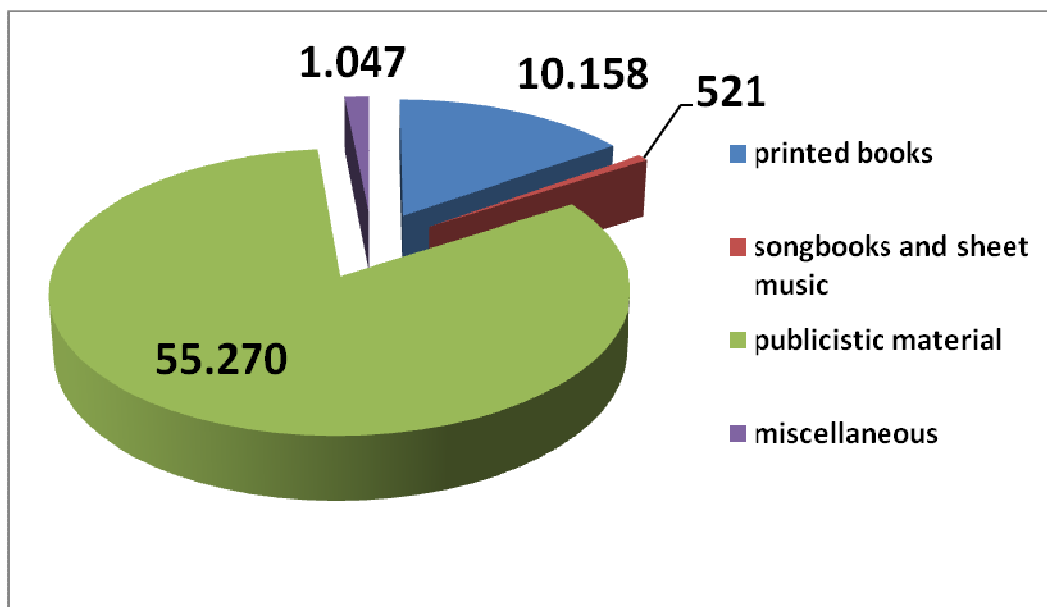


Figure 5: material digitised until year 3

Full-text creation/OCR

The full-text creation of the digitised documents was intended by almost all partners. **66.996 items or 14% of the material digitised has been OCR'ed where applicable, by SBB, BNF, BNU&BDIC, KBR, BL, KB and NLS.** The OCR was done separately by each institution. This corpus consists of:

- 10.158 printed books
- 521 Songbooks and sheet music
- 55.270 items of publicistic material
- 1.047 items of miscellaneous material



3.3. Ingestion Progress

By April 2014, all partners have successfully ingested almost all of their collections in 'The European Library' (TEL) or Europeana respectively. According to the DoW, 425.000 items should be ingested at the end of the final project year (April 2014). The project partners have been more ambitious with the ingestion in total here as well. **485.117 items were harvested by the aggregator of EC1418 TEL and 482.232 items in total are available in Europeana by month 36.**

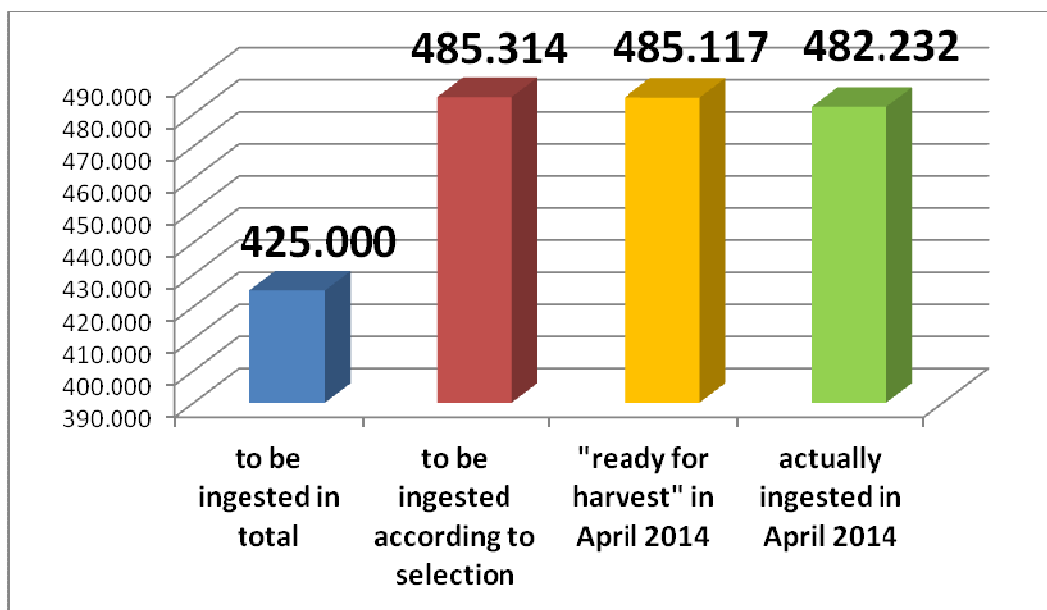


Figure 6: ingestion plan and progress until year 3

These **482.232 items** represent **115%** of the total amount of items to be ingested within the project. Not all of the digitised material is yet available for harvesting as for one small collection some technical issues need to be solved and some final updates of collections will be done at the end of April 2014.

With the next publication of material from The European Library to Europeana, **485.117 items representing 116%** will be available in Europeana.

The next diagram shows the ingestion effort of the project partners.

- SBB 7.137 items
- BNF 47.897 items
- BNU&BDIC 74.029 items
- BNCRM 5.579 items
- BNCF 3.892 items
- KBR 15.027 items
- KB 6.798 items
- BL 9.632 items
- ONB 79.007 items
- NLS 2.066 items
- ICCU 231.168 items.

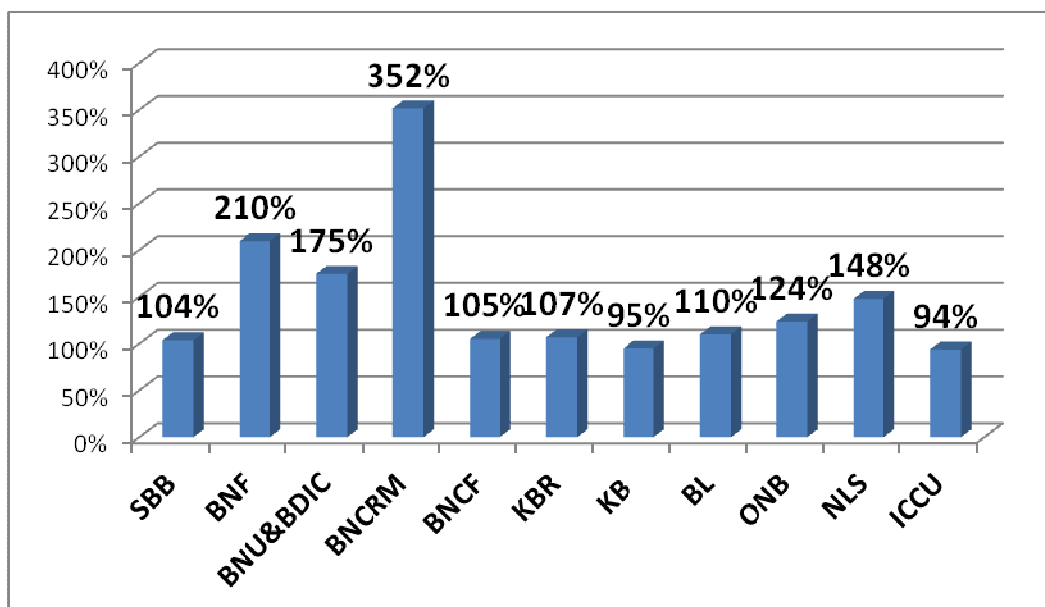


Figure 7: ingestion effort until year 3

In terms of ingestion all partners provided to TEL and Europeana the material they promised to according to DoW. Nevertheless, there are still some final updates left.

The BL still has one collection with 197 items left to prepare for harvesting as unforeseen internal technical issues arised. These will be fixed in the upcoming weeks after the project ends and an update is foreseen at the beginning of June. ONB updated at the end of April already ingested material with new metadata including the final corpus of picture material. The KB already delivered to TEL everything they digitised, but had to postpone the publication of two collections as they are still awaiting the final approval from a Danish rights organization. This has taken longer than foreseen, but will be finalised soon. At the moment of reporting it is foreseen, that the material will be ready for display at the beginning of June.

Depending on the ingestion schedule and the processing of the data within the Europeana Foundation the collections will become visible within two months after the final harvest.

The evaluation of the nature of the provided items to the project made another aspect of the provided material visible: Not only does one item necessarily represent one object (depending on the providing institution) but also one record does not necessarily represent one item. Several institutions within the consortium provide with one record several items which results in lower numbers of records than numbers of items. For this reason the 467.084 objects (or 485.314 items respectively) provided within this project do not result in 467.084 or 485.314 records on Europeana in the end. The number of records there will be approx. 255.503.

The following table presents the number of items in comparison to the records provided:

	items (according to DoW)	records (expected on Europeana)
SBB	7.137	7.137
BNF	47.897	32.836
BNU & BDIC	74.029	23.703
BNCRM	5.579	5.579
BNCF	3.892	3.892
KBR	15.027	14.714
KB	8.660	8.571
BL	9.829	2.066
ONB	80.030	71.801
NLS	2.066	2.066
ICCU	231.168	83.138

For four out of eleven content providing partners their items represent the same amount of records. For the other partners of the consortium one record (of parts or all of their collections) stands for several items.

4. Summary

To summarize the selection, digitisation and ingestion efforts of the project Europeana Collections 1914-1918 at the end of the project it can be said that all project goals were successfully (over)achieved (**selection: 485.314 instead of 425.000 items; digitisation 485.117 instead of 425.000 items; ingestion: 482.232 instead of 425.000 items**). From a global point of view, the selection, digitisation and ingestion of items is finished by exceeding the 100% mark, however, as almost all partners have identified more material than initially planned, they provide more material to the project with the same amount of budget.

The cooperation and communication within the project consortium was very fruitful and supportive. All partners continued with their digitisation plans and revised their ingestion plans for their institutions and provided the work package leaders and project management with essential information for the reporting in time.

In the end, it turns out that the processes of the project from selecting, to digitising, to metadata generation, to ingesting items has been a more iterative than a parallel processes. The high achievement rates in selection in the beginning of the project show, that the partners concentrated on the selection of items first. Digitisation started after the successful definition of digitisation workflows, finding subcontractors and first selection. A later step in the process chain was the generation of metadata and finally the ingestion, which went into the focus of activities in year two of the project and took up speed in the final project months.

This is also represented well in the curves of this last graph below, summarizing the progress of the project Europeana Collections 1914-1918 until the end of the project in April 2014. While the blue curve representing 'selection' ascends abruptly from the very beginning of the project, the red and the green curve representing 'digitisation' and 'ingestion' start to ascend flat-angled, catch up later and meet in month 36.

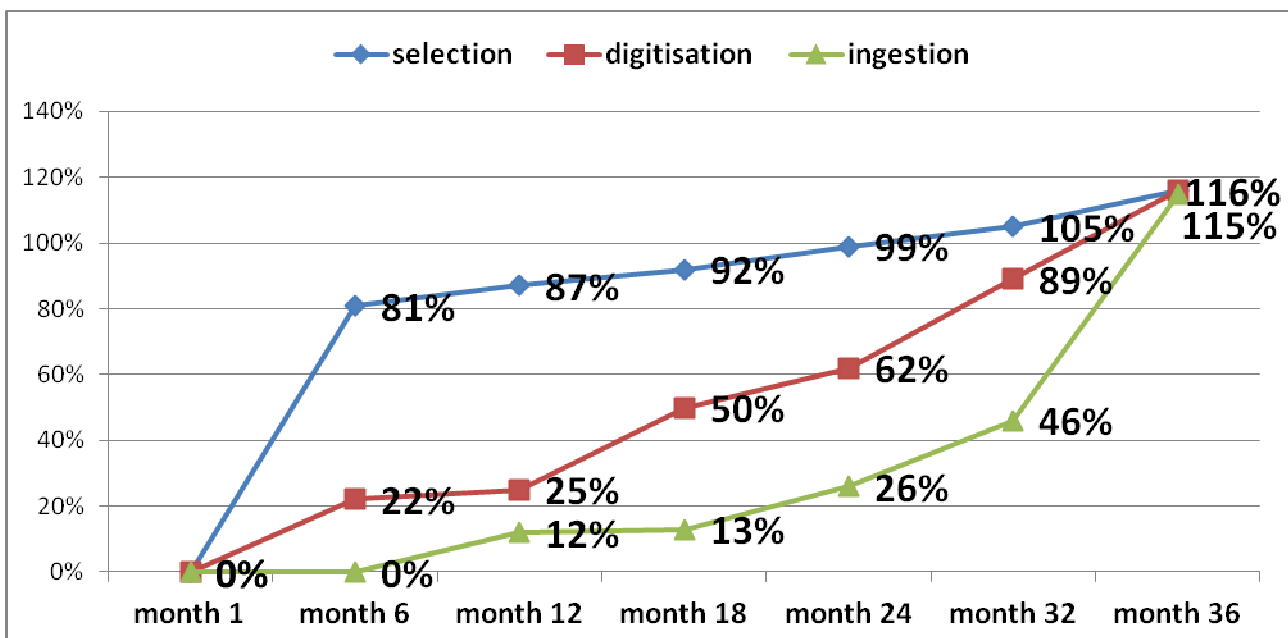


Figure 8: project progress until year 3

5. Annex I – ‘Digitisation progress monitoring template’

Screenshots from the ‘Digitisation progress monitoring template’ from April 30th, 2014.

Summary

	NEW from Oct2013: NUMBER OF OBJECTS at the beginning of the project	NEW from Oct2013: NUMBER OF OBJECTS at the end of the project	Definitive number of scans (Total sum)	Sum: Proposed Source Quantity According to Description of Work	Selected		Digitised		Ready for Harvest		Ingested in Europeana	
					amount	percentage	amount	percentage	amount	percentage	amount	percentage
					SBB	6.880	7.137	304.005	6.880	7.137	104%	7.137
BNF	22.839	47.897	706.093	22.839	47.897	210%	47.897	210%	47.897	210%	47.897	210%
BNU & BDIC	42.363	74.029	288.662	42.363	74.029	175%	74.029	175%	74.029	175%	74.029	175%
BNCRM	1.587	5.579	87.797	1.587	5.579	352%	5.579	352%	5.579	352%	5.579	352%
BNCF	3.702	3.892	180.795	3.702	3.892	105%	3.892	105%	3.892	105%	3.892	105%
KBR	14.058	15.027	187.287	14.058	15.027	107%	15.027	107%	15.027	107%	15.027	107%
KB	7.172	8.660	157.128	7.172	8.660	121%	8.660	121%	8.660	121%	6.798	95%
BL	8.758	9.829	248.358	8.758	9.829	112%	9.829	112%	9.632	110%	9.632	110%
ONB	63.933	80.030	458.497	63.933	80.030	125%	80.030	125%	80.030	125%	79.007	124%
NLS	1.395	2.066	45.017	1.395	2.066	148%	2.066	148%	2.066	148%	2.066	148%
ICCU	137.443	212.938	256.686	246.600	231.168	94%	231.168	94%	231.168	94%	231.168	94%
	310.130	467.084	2.920.325	419.287	485.314	116%	485.314	116%	485.117	116%	482.232	115%

Last date of reporting	Source Type	Proposed Source Quantity According to Description of Work	Collection Description (DoW extended)	Unit of measurement (page, volume, issue or item)	Number of items foreseen according to DoW	Production Monitoring Summary										Format & Quality					Metadata	Definitive number of scans										
						NUMBER OF OBJECTS like books, songbooks, albums, letters etc.			Actual number of items to be digitised		Selected		Digitised		Ready for Harvest (Dig. Obj. +Metadata avail)		Ingested in Europeana		Controlled vocabulary metadata or information on a certain area provided with collection													
						Please enter (only) the INITIAL number of OBJECTS here (like 648) relating to the DoW	Please enter the OBJECT TYPE (like book, leaflet or else), but neither ITEM nor PAGES	Please enter (only) the FINAL number of OBJECTS here (like 648)	amount	percentage	amount	percentage	amount	percentage	amount	percentage	amount	percentage	What? EC1418 subject headings	What? EC1418 object types			Who? (e.g. VIAF, PND or else)	Where? (e.g. geo-coordinates, other spatial information)	When? (dates, times etc.)	format	resolution	format	resolution	OCR		
SBB	14.04.2014	Printed books	3310	Reference works	volumes	90	90	book	57	57	63%	57	63%	57	107%	57	63%	yes	yes	no	no	year	TIFF	300 dpi	jpg	300 dpi	yes	METS/MODS	304.005			
				Fiction	volumes	630	630	book	319	319	51%	319	51%	319	51%	319	51%	319	51%	yes	yes	no	no	year	TIFF	300 dpi	jpg	300 dpi		yes	METS/MODS	
				Light fiction	volumes	80	80	book	88	88	88	100%	88	100%	88	100%	88	100%	88	100%	yes	yes	no	no	year	TIFF	300 dpi	jpg		300 dpi	yes	METS/MODS
				Poetry	volumes	550	550	book	380	380	380	69%	380	69%	380	69%	380	69%	380	69%	yes	yes	no	no	year	TIFF	300 dpi	jpg		300 dpi	yes	METS/MODS
				Theater	volumes	150	150	book	82	82	82	55%	82	55%	82	55%	82	55%	82	55%	yes	yes	no	no	year	TIFF	300 dpi	jpg		300 dpi	yes	METS/MODS
				Children's literature	volumes	210	210	book	263	263	263	100%	263	100%	263	100%	263	100%	263	100%	yes	yes	no	no	year	TIFF	300 dpi	jpg		300 dpi	yes	METS/MODS
				Military literature, guides, manuals	volumes	100	100	book	360	360	360	100%	360	100%	360	100%	360	100%	360	100%	yes	yes	no	no	year	TIFF	300 dpi	jpg		300 dpi	yes	METS/MODS
				War libraries	volumes	10	10	book	6	6	6	60%	6	60%	6	60%	6	60%	6	60%	yes	yes	no	no	year	TIFF	300 dpi	jpg		300 dpi	yes	METS/MODS
				Daily Life (cookbooks, guides, manuals)	volumes	310	310	book	229	229	229	74%	229	74%	229	74%	229	74%	229	74%	yes	yes	no	no	year	TIFF	300 dpi	jpg		300 dpi	yes	METS/MODS
				Travel literature	volumes	30	30	book	26	26	26	87%	26	87%	26	87%	26	87%	26	87%	yes	yes	no	no	year	TIFF	300 dpi	jpg		300 dpi	yes	METS/MODS
				Historical literature	volumes	0	0	book	314	314	314	100%	314	100%	314	100%	314	100%	314	100%	yes	yes	no	no	year	TIFF	300 dpi	jpg		300 dpi	yes	METS/MODS
				Religious literature	volumes	770	770	book	707	707	707	92%	707	92%	707	92%	707	92%	707	92%	yes	yes	no	no	year	TIFF	300 dpi	jpg		300 dpi	yes	METS/MODS
				Financial, economic literature	volumes	0	0	book	209	209	209	100%	209	100%	209	100%	209	100%	209	100%	yes	yes	no	no	year	TIFF	300 dpi	jpg		300 dpi	yes	METS/MODS
				Political, propaganda literature	volumes	0	0	book	253	253	253	100%	253	100%	253	100%	253	100%	253	100%	yes	yes	no	no	year	TIFF	300 dpi	jpg		300 dpi	yes	METS/MODS
				Medical literature	volumes	150	150	book	51	51	51	34%	51	34%	51	34%	51	34%	51	34%	yes	yes	no	no	year	TIFF	300 dpi	jpg		300 dpi	yes	METS/MODS
Welfare literature	volumes	100	100	book	79	79	79	79%	79	79%	79	79%	79	79%	79	79%	yes	yes	no	no	year	TIFF	300 dpi	jpg	300 dpi	yes	METS/MODS					
Popular regional literature	volumes	130	130	book	55	55	55	42%	55	42%	55	42%	55	42%	55	42%	yes	yes	no	no	year	TIFF	300 dpi	jpg	300 dpi	yes	METS/MODS					
Memoirs, letters etc.	volumes	0	0	book	89	89	89	100%	89	100%	89	100%	89	100%	89	100%	yes	yes	no	no	year	TIFF	300 dpi	jpg	300 dpi	yes	METS/MODS					
SBB	14.04.2014	songbooks and sheet music	480	Printed Music Book	volumes	100	100	book	153	153	100%	153	100%	153	100%	153	100%	no	yes	no	no	year	TIFF	300 dpi	jpg	300 dpi	no	METS/MODS				
				Printed Music Sheet	volumes	380	380	sheet	110	110	110	29%	110	29%	110	29%	110	29%	no	yes	no	no	year	TIFF	300 dpi	jpg	300 dpi	no	METS/MODS			
SBB	14.04.2014	Publicistic Material	1920	Newspapers	issues	0	0		0	0	#DIV/0!	0	#DIV/0!	0	#DIV/0!	0	#DIV/0!	no	yes	no	no	year	TIFF	300 dpi	jpg	300 dpi	no	METS/MODS				
				Other periodicals	issues	320	320	issue	1.266	1.266	1.266	100%	1.266	100%	1.266	100%	1.266	100%	no	yes	no	no	year	TIFF	300 dpi	jpg	300 dpi	no	METS/MODS			
				Pamphlets and leaflets	items	1.050	1.050	leaflet	774	774	774	74%	774	74%	774	74%	774	74%	no	yes	no	no	year	TIFF	300 dpi	jpg	300 dpi	no	METS/MODS			
SBB	14.04.2014	Manuscript material	350	Other publicistic material (community news letters, specials announcements of companies and societies, etc.)	issues	550	550	issue	0		0%		0%	0	0%																	
				Autographs	volumes	50	50	sheet	10	10	20%	10	20%	10	20%	10	20%	10	20%	no	yes	no	no	year/ partly date	TIFF	300 dpi	jpg	300 dpi	no	METS/MODS		
				War postcards	items	50	50	postcard	120	120	120	100%	120	100%	120	100%	120	100%	120	100%	no	yes	no	no	year/ partly date	TIFF	300 dpi	jpg	300 dpi	no	METS/MODS	
				War journals	volumes	20	20	book	17	17	17	85%	17	85%	17	85%	17	85%	17	85%	no	yes	no	no	year/ partly date	TIFF	300 dpi	jpg	300 dpi	no	METS/MODS	
				Diaries	volumes	30	30	diary	7	7	7	23%	7	23%	7	23%	7	23%	7	23%	no	yes	no	no	year	TIFF	300 dpi	jpg	300 dpi	no	METS/MODS	
SBB	14.04.2014	Picture material	400	Letters	volumes	200	200	letter	377	377	100%	377	100%	377	100%	377	100%	no	yes	no	no	year/ partly date	TIFF	300 dpi	jpg	300 dpi	no	METS/MODS				
				Photographs	items	300	300	picture	433	433	433	100%	433	100%	433	100%	433	100%	433	100%	no	yes	no	no	year	TIFF	300 dpi	jpg	300 dpi	no	METS/MODS	
SBB	14.04.2014	Misc.	420	Postcards	items	100	100	postcard	94	94	94%	94	94%	94	94%	94	94%	no	yes	no	no	year	TIFF	300 dpi	jpg	300 dpi	no	METS/MODS				
				Printed Maps	items	130	130	map	97	97	97	75%	97	75%	97	75%	97	75%	no	yes	no	no	year	TIFF	300 dpi	jpg	300 dpi	no	METS/MODS			
				Other	volumes	290	290	issue/book	112	112	112	39%	112	39%	112	39%	112	39%	112	39%	no	yes	no	no	year	TIFF	300 dpi	jpg	300 dpi	no	METS/MODS	
					6.880	0	0	6.880	6.880	100%	7.137	7.137	100%	7.137	7.137	100%													304.005			

BNF

Provider	Last date of reporting	Source Type	Proposed Source Quantity According to Description of Work	Collection Description (DoW extended)	Unit of measurement (page, volume, issue or item)	Number of items foreseen according to DoW	NUMBER OF OBJECTS like books, songbooks, albums, letters etc.			Actual number of items to be digitised	Production Monitoring Summary								Format & Quality					Metadata	Definitive number of scans									
							Please enter (only) the INITIAL number of OBJECTS here (like 648) relating to the DoW	Please enter the OBJECT TYPE (like book, leaflet or else), but neither ITEM nor PAGES	Please enter (only) the FINAL number of OBJECTS here (like 648)		Selected		Digitised		Ready for Harvest (Dig. Obj. +Metadata avail)		Ingested in Europeana		Controlled vocabulary metadata or information on a certain area provided with collection							master copy		access copy						
											amount	percentage	amount	percentage	amount	percentage	amount	percentage	amount	percentage	What? ECI418 subject headings	What? ECI418 object types	Who? (e.g. VIAF, PND or else)			Where? (e.g. geo-coordinates, other spatial information)	When? (dates, times etc.)	format	resolution	format	resolution	OCR		
BnF	27/01/2014	Printed books	3.173	Reference works	volumes	1.000	1.000	Monographs	1.091	1.091	1.091	108%	1.091	107%	1.091	109%	1.091	0%	YES (RAMEAU, mapping EC1418 subject headings to TEL)	Yes	When applicable (VIAF link, char list)	When available (vedette composée possible)	YES	TIFF	400 dpi	JPG	300dpi	yes	DC	42.574				
				Fiction	volumes	345	345	Monographs	183	183	183	53%	183	53%	183	0%	183	0%	183	0%	id	id	id	id	YES	TIFF	400 dpi	JPG	300dpi	yes	id	19.352		
				Light fiction	volumes	0	0	Monographs	0	0	0	0%	0	0%	0	0%	0	0%	0	0%														0
				Children's literature	volumes	50	50	Periodicals	0	0	0	0%	0	0%	0	0%	0	0%	0	0%	id	id	id	id	YES	TIFF	400 dpi	JPG	300dpi	yes	id	0		
				Military literature, guides, manuals; Daily Life (cookbooks, guides, manuals); Religious literature	volumes	778	778	Monographs	778	778	778	100%	778	100%	778	0%	778	0%	778	0%	id	id	id	id	YES	TIFF	400 dpi	JPG	300dpi	yes	id	5.231		
BnF	"	Songbooks and music sheet	226	Songbooks and music sheet	volumes	226	226	Music sheets	281	281	281	124%	281	123%	281	124%	281	0%	id	id	id	id	YES	TIFF					when applicable	id	3.308			
BnF	"	Publicistic Material	7267	Newspapers	volumes	7.000	7.000	Newspapers/Periodicals	32.489	32.489	32.489	464%	32.489	441%	32.489	464%	32.489	0%	id	id	id	id	YES	TIFF	400 dpi	JPG	300dpi	yes (with exceptions)	id	588.999				
				Other periodicals	volumes	0	0	0	0%	0	0%	0	0%	0	0%	0	0%	0	0%													0		
				Pamphlets and Leaflets	items	267	267	Leaflets	267	267	267	100%	267	100%	267	0%	267	0%	267	0%	id	id	id	id	YES	TIFF	400 dpi	JPG	300dpi	yes	id	2.500		
		Other publicistic material (community newsletters, specials announcements of companies and societies, posters)			0	0	0	0%	0	0%	0	0%	0	0%	0	0%	0	0%												0				
BnF	"	Picture material	11800	Picture material	items	11.800	11.800	Photographs	11.253	11.253	11.253	95%	11.253	95%	11.253	95%	11.253	0%	id	id	id	id	YES	TIFF	400 dpi for >A6; 600 dpi <=A6			no	id	11.245				
BnF	"	Maps	112	Maps	items	112	112	Maps	177	177	177	158%	177	156%	177	158%	177	0%	id	id	id	YES	YES	TIFF	400 dpi for >A6; 600 dpi <=A6			no	id	175				
BnF	"	Manuscript material	101	Manuscript	items	101	101	Manuscripts	125	125	125	123%	125	34%	125	124%	125	0%	id	id	id	No (see rmq above)	YES	TIFF				no	id	18.579				
BnF	"	Misc.	160	Misc.	items	160	160	Coins/ Medals	253	253	253	158%	253	156%	253	158%	253	0%	id	id	id	id	YES	TIFF	1200 dpi and over for coins & medals			when applicable	id	9.657				
			22.839			22.839	22.839	47.897	47.897	47.897	100%	47.897	210%	47.897	100%	47.897	0%													706.093				

Provider	Last date of reporting	Source Type	Proposed Source Quantity According to Description of Work	Collection Description (DOW extended)	Unit of measurement (page, volume, issue or item)	Number of items foreseen according to DOW	NUMBER OF OBJECTS like books, songbooks, albums, letters etc.			Actual number of items to be digitised	Production Monitoring Summary										Format & Quality					Metadata	Definitive number of scans						
							Please enter (only) the INITIAL number of OBJECTS here (like 648) relating to the DOW	Please enter the OBJECT TYPE (like book, leaflet or else) but neither ITEM nor PAGES	Please enter (only) the FINAL number of OBJECTS here (like 648)		Selected		Digitised		Ready for Harvest (Dig. Obj. +Metadata avail)		Ingested in Europeana		Controlled vocabulary metadata or information on a certain area provided with collection					master copy				access copy					
											amount	percentage	amount	percentage	amount	percentage	amount	percentage	amount	percentage	What? EC1418 subject headings	What? EC1418 object types	Who? (e.g. VIAF, PND or else)	Where? (e.g. geo-coordinates, other spatial information)	When? (dates, times etc)			format	resolution	format	resolution	OCR	
BNU	25.4.2014	Printed books	320	Reference works	volumes	50	50	book	40	40	40	80%	40	80%	40	80%	40	80%	YES (RAMEAU indexation, when available)	Yes (mapping and conversion rules need to be checked)	No (VIAF link char list)	No (vedette composée Rameau)	YES	tiff	300dpi	jpeg	150 dpi	yes	MARC, DC and probably EDM	19.514			
				Fiction	volumes	100	100	book	4	4	4	4%	4	4%	4	4%	4	4%	id	id	id	id	YES	tiff	300dpi	jpeg	150 dpi	yes	MARC, DC and probably EDM				
				Poetry	volumes	0	0	book	35	35	35	100%	35	100%	35	3500%	35	100%	id	id	id	id	YES	tiff	300dpi	jpeg	150 dpi	yes	MARC, DC and probably EDM				
				Theater	volumes	0	0	book	2	2	2	100%	2	100%	2	100%	2	100%	id	id	id	id	YES	tiff	300dpi	jpeg	150 dpi	yes	MARC, DC and probably EDM				
				Military literature, guides, manuals, war libraries	volumes	10	10	book	1	1	1	10%	1	10%	1	10%	1	10%	id	id	id	id	YES	tiff	300dpi	jpeg	150 dpi	yes	MARC, DC and probably EDM				
				Daily Life (cookbooks, guides, manuals)	volumes	20	20	book	33	33	33	100%	33	100%	33	100%	33	100%	id	id	id	id	YES	tiff	300dpi	jpeg	150 dpi	yes	MARC, DC and probably EDM				
				Travel literature	volumes	20	20	book	0	0	0	0%	0	0%	0	0%	0	0%	id	id	id	id	YES	tiff	300dpi	jpeg	150 dpi	yes	MARC, DC and probably EDM				
				Historical literature	volumes	0	0	book	0	0	0	#DIV/0!	0	#DIV/0!	0	#DIV/0!	0	#DIV/0!	id	id	id	id	YES										
				Religious literature	volumes	20	20	book	34	34	34	100%	34	100%	34	100%	34	100%	id	id	id	id	YES	tiff	300dpi	jpeg	150 dpi	yes	MARC, DC and probably EDM				
Popular literature	volumes	100	100	book	9	9	9	9%	9	9%	9	9%	9	9%	id	id	id	id	YES														
				Political, propaganda literature	volumes	0	0	book	27	27	27	100%	27	100%	27	100%	id	id	id	id	YES												
BNU	25/04/2014	Songbooks and music sheets	20	Manuscript Music sheet	items	20	20	manuscripts	0	0	0	0%	0	0%	0	0%	0	0%	id	id	id	id	YES	tiff	300dpi	jpeg	150 dpi	no	MARC, DC and probably EDM				
				Printed Music Book	volumes	0	0	volumes	33	33	33	100%	33	100%	33	100%	33	100%	id	id	id	id	YES										
BNU	25/04/2014	Publicistic Material	100	Newspapers	issues	50	50	issues	20.018	20.018	20.018	100%	20.018	100%	20.018	100%	20.018	100%	id	id	id	id	YES	tiff	300dpi	jpeg	150 dpi	yes	MARC, DC and probably EDM	154.234			
				Other periodicals	issues	50	50	issues	242	242	242	100%	242	100%	242	100%	242	100%	id	id	id	id	YES	tiff	300dpi	jpeg	150 dpi	yes	MARC, DC and probably EDM				
BNU	25/04/2014	Picture material	2138	Posters	items	1.000	1.000	sheets of paper	1.500	1.500	1.500	100%	1.500	100%	1.500	100%	1.500	100%	id	id	id	id	YES	tiff	300dpi	jpeg	150 dpi	no	MARC, DC and probably EDM	3.000			
				Photographs	items	500	500	photographs	59	59	59	12%	59	12%	59	12%	59	12%	id	id	id	id	YES	tiff	300dpi	jpeg	150 dpi	no	MARC, DC and probably EDM				
				Postcards	items	500	500	postcards	268	268	268	54%	268	54%	268	54%	268	54%	id	id	id	id	YES	tiff	300dpi	jpeg	150 dpi	no	MARC, DC and probably EDM				
				Medals, coins	items	138	138	coins	463	463	463	100%	463	100%	463	100%	463	100%	id	id	id	id	YES	tiff	400 dpi	jpeg	150 dpi	no	MARC, DC and probably EDM				
BNU	25/04/2014	Maps	290	Printed Maps	items	265	265	sheets of paper	0	0	0	0%	0	0%	0	0%	0	0%	id	id	id	id	YES	tiff	300dpi	jpeg	150 dpi	no	MARC, DC and probably EDM				
				Atlas	volumes	25	25	book	0	0	0	0%	0	0%	0	0%	0	0%	id	id	id	id	YES	tiff	300dpi	jpeg	150 dpi	no	MARC, DC and probably EDM				
BNU	25/04/2014	Manuscript material	20	War postcards	items	10	10	postcards	0	0	0	0%	0	0%	0	0%	0	0%	id	id	id	id	YES	tiff	300dpi	jpeg	150 dpi	no	MARC, DC and probably EDM				
				War journals	volumes	5	5	printed sheets made of lithographic material	124	124	124	100%	124	100%	124	100%	124	100%	id	id	id	id	YES	tiff	300dpi	jpeg	150 dpi	no	MARC, DC and probably EDM				
				Letters	items	5	5	sheets of paper	0	0	0	0%	0	0%	0	0%	0	0%	id	id	id	id	YES	tiff	300dpi	jpeg	150 dpi	no	MARC, DC and probably EDM				
BDIC	03.11.2014	Picture material	39200	Posters and original art	items	4.200	4.200	drawings, paintings and posters	4.070	4.070	4.070	100%	4.070	100%	4.070	100%	4.070	97%	YES (RAMEAU indexation, when available)	Yes (mapping and conversion rules need to be checked)	No (VIAF link char list)	No (vedette composée Rameau)	YES	tiff	300dpi	jpeg	150 dpi	no	DC (XML-EAD available in september 2014)	4.070			
				Photographs	items	35.000	35.000	Photographs	39.596	39.596	39.596	100%	39.596	100%	39.596	0%	39.596	100%	YES (RAMEAU indexation, when available)	Yes (mapping and conversion rules need to be checked)	No (VIAF link char list)	No (vedette composée Rameau)	YES	tiff	300dpi	jpeg	150 dpi	no	DC (XML-EAD available in september 2014)	39.596			
BDIC	03.11.2014	Misc.	275	transcripts	items	275	275	letters, archiv, reports, memoirs	6.254	6.254	6.254	100%	6.254	100%	6.254	0%	6.254	100%	YES (RAMEAU indexation, when available)	Yes (mapping and conversion rules need to be checked)	No (VIAF link char list)	No (vedette composée Rameau)	YES	tiff	300dpi	jpeg	150 dpi	no	DC (XML-EAD available in september 2014)	34.054			
BDIC	03.11.2014	Printed books	0	Military literature, guides, manuals, war libraries principally (regimental historics)	volumes	0	0	books	476	476	476	100%	476	100%	476	100%	476	100%	YES (RAMEAU indexation, when available)	Yes (mapping and conversion rules need to be checked)	No (VIAF link char list)	No (vedette composée Rameau)	YES	tiff	300dpi	jpeg	150 dpi	yes	DC (XML-EAD available in september 2014)	24.143			
BDIC	03.11.2014	Publicistic Material	0	Newspapers	issue	0	0	newspapers	741	741	741	100%	741	100%	741	100%	741	100%	YES (RAMEAU indexation, when available)	Yes (mapping and conversion rules need to be checked)	No (VIAF link char list)	No (vedette composée Rameau)	YES	tiff	300dpi	jpeg	150 dpi	yes	DC (XML-EAD available in september 2014)	9.588			
			42.363			42.363	42.363	74.029	74.029	74.029	100%	74.029	100%	74.029	100%	74.029	100%													288.662			

BNCRM

							Please enter (only) the INITIAL number of OBJECTS here (like 648) relating to the DOW	Please enter the OBJECT TYPE (like book, leaflet or else), but neither ITEM nor PAGES	Please enter (only) the FINAL number of OBJECTS here (like 648)	Selected		Digitised		Ready for Harvest (Dig. Obj. +Metadata avail)		Ingested in Europeana		Controlled vocabulary metadata or information on a certain area provided with collection					master copy		access copy		OCR				
										amount	percentage	amount	percentage	amount	percentage	amount	percentage	What? EC1418 subject headings	What? EC1418 object types	Who? (e.g. VIAF, PND or else)	Where? (e.g. geo-coordinates, other spatial information)	When? (dates, times etc.)	format	resolution	format	resolution					
BNCRM	15/04/2014	Printed books	250	Fiction	volumes	100	100	books	32	32	32	32%	32	32%	32	32%	32	32%	Yes	Yes		Year	tiff 6.0	300 dpi	300 dpi	jpeg		DC	2.477		
				Poetry	volumes	0	0	books	365	365	365	100%	365	100%	365	100%	365	100%	365	100%	Yes	Yes		Year	tiff 6.0	300 dpi	300 dpi	jpeg		DC	13.720
				Theater	volumes	0	0	books	47	47	47	100%	47	100%	47	100%	47	100%	47	100%	Yes	Yes		Year	tiff 6.0	300 dpi	300 dpi	jpeg		DC	2.380
				Children's literature	volumes	50	50	books	34	34	34	68%	34	68%	34	68%	34	68%	34	68%	Yes	Yes		Year	tiff 6.0	300 dpi	300 dpi	jpeg		DC	1.620
				Military literature, guides, manuals	volumes	100	100	books	360	360	360	100%	360	100%	360	100%	360	100%	360	100%	Yes	Yes		Year	tiff 6.0	300 dpi	300 dpi	jpeg		DC	12.820
				Religious literature	volumes	0	0	books	76	76	76	100%	76	100%	76	100%	76	100%	76	100%	Yes	Yes		Year	tiff 6.0	300 dpi	300 dpi	jpeg		DC	3.121
				Political, propaganda literature	volumes	0	0	books	212	212	212	100%	212	100%	212	100%	212	100%	212	100%	Yes	Yes		Year	tiff 6.0	300 dpi	300 dpi	jpeg		DC	8.725
Popular literature	volumes	0	0	books	27	27	27	100%	27	100%	27	100%	27	100%	27	100%	27	100%	Yes	Yes		Year	tiff 6.0	300 dpi	300 dpi	jpeg		DC	2.277		
BNCRM		Songbooks and sheet music	30	Printed Music Book	volumes	30	30	songbooks	3	3	3	10%	3	10%	3	10%	3	10%	Yes	Yes		Year	tiff 6.0	300 dpi	300 dpi	jpeg		DC	86		
BNCRM	15/04/2014	Publicistic Material	70	Satirical periodical	issues	434	434	periodical	1.875	1.875	1.875	100%	1.875	100%	1.875	100%	1.875	100%	Yes	Yes		Year	tiff 6.0	300 dpi	300 dpi	jpeg		DC	11.849		
				Other periodicals	issues	123	123	periodical	2.030	2.030	2.030	100%	2.030	100%	2.030	100%	2.030	100%	2.030	100%	Yes	Yes		Year	tiff 6.0	300 dpi	300 dpi	jpeg		DC	9.480
				Pamphlets and Leaflets	volumes	0	0	pamphlets	145	145	145	100%	145	100%	145	100%	145	100%	145	100%	Yes	Yes		Year	tiff 6.0	300 dpi	300 dpi	jpeg		DC	239
				Other publicistic material (community newsletters, special announcements of companies and societies, ...)	volumes	215	215	other publicistic material	69	69	69	32%	69	32%	69	32%	69	32%	69	32%	Yes	Yes		Year	tiff 6.0	300 dpi	300 dpi	jpeg		DC	4.213
BNCRM		Maps	50	Printed Maps	items	49	49	printed map	63	63	63	100%	63	100%	63	100%	63	100%	Yes	Yes		Year	tiff 6.0	300 dpi	300 dpi	jpeg		DC	146		
BNCRM		Manuscript Material	10	Atlas	volumes	1	1	atlas	1	1	1	100%	1	100%	1	100%	1	100%	Yes	Yes		Year	tiff 6.0	300 dpi	300 dpi	jpeg		DC	65		
BNCRM	15/04/2014	Picture material	797	Letters	items	10	10	letters	8	8	8	80%	8	80%	8	80%	8	80%	Yes	Yes		Year	tiff 6.0	300 dpi	300 dpi	jpeg		DC	75		
				Posters	items	62	62	poster	27	27	27	44%	27	44%	27	44%	27	44%	27	44%	Yes	Yes		Year	tiff 6.0	300 dpi	300 dpi	jpeg		DC	27
				Photographs	items	0	0	photograph	0	0	0	#DIV/0!	0	#DIV/0!	0	#DIV/0!	0	#DIV/0!	0	#DIV/0!	Yes	Yes		Year	tiff 6.0	300 dpi	300 dpi	jpeg		DC	0
				Postcards	items	21	21	postcards	26	26	26	100%	26	100%	26	100%	26	100%	26	100%	Yes	Yes		Year	tiff 6.0	300 dpi	300 dpi	jpeg		DC	52
				Poststamps	items	3	3	poststamps	3	3	3	100%	3	100%	3	100%	3	100%	3	100%	Yes	Yes		Year	tiff 6.0	300 dpi	300 dpi	jpeg		DC	3
				Other Picture Material (pictures/ glass plates)	items	9	9	other picture material	7	7	7	78%	7	78%	7	78%	7	78%	7	78%	Yes	Yes		Year	tiff 6.0	300 dpi	300 dpi	jpeg		DC	10
BNCRM		Misc.	380	Printed letters	items	0	0	printed letters	5	5	5	100%	5	100%	5	100%	5	100%	Yes	Yes		Year	tiff 6.0	300 dpi	300 dpi	jpeg		DC	542		
				Memoirs	volumes	380	380	memoirs	164	164	164	43%	164	43%	164	43%	164	43%	Yes	Yes		Year	tiff 6.0	300 dpi	300 dpi	jpeg		DC	13.870		
			1587			1.587	1.587		5.579	5.579	5.579	100%	5.579	100%	5.579	100%	5.579	100%											87.797		

Provider	Last date of reporting	Source Type	Proposed Source Quantity According to Description of Work	Collection Description (DOW extended)	Unit of measurement (page, volume, issue or item)	Number of items foreseen according to DoW	NUMBER OF OBJECTS like books, songbooks, albums, letters etc.			Actual number of items to be digitised	Production Monitoring Summary								Format & Quality					Metadata	Definitive number of scans										
							Please enter the INITIAL number of OBJECTS here (like 648) relating to the DOW	Please enter the OBJECT TYPE (like book or else), but neither ITEM nor PAGES	Please enter (only) the FINAL number of OBJECTS here (like 648)		Selected		Digitised		Ready for Harvest (Dig. Obj. +Metadata avail)		Ingested in Europeana		Controlled vocabulary metadata or information on a certain area provided with collection							master copy		access copy							
											amount	percentage	amount	percentage	amount	percentage	amount	percentage	What? EC1418 subject headings	What? EC1418 object types	Who? (e.g. VIAF, PND or else)	Where? (e.g. geo-coordinates, other spatial information)	When? (dates, times etc.)			format	resolution	format	resolution	OCR					
KBR	28/02/2014	Printed books	6319	Reference works	volumes	5,086	5,086	book	328	328	328	6%	328	6%	328	6%	328	6%	328	6%	yes	yes	no	no	yes	TIFF	400-300dpi	pdf	200 dpi	YES	OPAC (Marc21)	147,818			
				Fiction	volumes	245	245	book	94	94	94	38%	94	38%	94	38%	94	38%	94	38%	94	38%	yes	yes	no	no	yes	TIFF	400-300dpi	pdf	200 dpi	YES	OPAC (Marc21)	0	
				Light fiction	volumes	7	7	book	13	13	13	100%	13	100%	13	100%	13	100%	13	100%	13	100%	yes	yes	no	no	yes	TIFF	400-300dpi	pdf	200 dpi	YES	OPAC (Marc21)	0	
				Poetry	volumes	31	31	book	52	52	52	100%	52	100%	52	100%	52	100%	52	100%	52	100%	yes	yes	no	no	yes	TIFF	400-300dpi	pdf	200 dpi	YES	OPAC (Marc21)	0	
				Theater	volumes	20	20	book	31	31	31	100%	31	100%	31	100%	31	100%	31	100%	31	100%	yes	yes	no	no	yes	TIFF	400-300dpi	pdf	200 dpi	YES	OPAC (Marc21)	0	
				Children's literature	volumes	1	1	book	8	8	8	100%	8	100%	8	100%	8	100%	8	100%	8	100%	yes	yes	no	no	yes	TIFF	400-300dpi	pdf	200 dpi	YES	OPAC (Marc21)	0	
				Military literature, guides, manuals	volumes	177	177	book	138	138	138	78%	138	78%	138	78%	138	78%	138	78%	138	78%	yes	yes	no	no	yes	TIFF	400-300dpi	pdf	200 dpi	YES	OPAC (Marc21)	0	
				Daily life (cookbooks, guides, manuals)	volumes	100	100	book	94	94	94	94%	94	94%	94	94%	94	94%	94	94%	94	94%	yes	yes	no	no	yes	TIFF	400-300dpi	pdf	200 dpi	YES	OPAC (Marc21)	0	
				Travel literature	volumes	2	2	book	7	7	7	100%	7	100%	7	100%	7	100%	7	100%	7	100%	yes	yes	no	no	yes	TIFF	400-300dpi	pdf	200 dpi	YES	OPAC (Marc21)	0	
				Historical literature	volumes	52	52	book	0	0	0	0%	0	0%	0	0%	0	0%	0	0%	0	0%	yes	yes	no	no	yes	TIFF	400-300dpi	pdf	200 dpi	YES	OPAC (Marc21)	0	
				Religious literature	volumes	433	433	book	54	54	54	12%	54	12%	54	12%	54	12%	54	12%	54	12%	yes	yes	no	no	yes	TIFF	400-300dpi	pdf	200 dpi	YES	OPAC (Marc21)	0	
				Financial, economic literature	volumes	25	25	book	80	80	80	100%	80	100%	80	100%	80	100%	80	100%	80	100%	yes	yes	no	no	yes	TIFF	400-300dpi	pdf	200 dpi	YES	OPAC (Marc21)	0	
				Political, propaganda literature	volumes	86	86	book	575	575	575	100%	575	100%	575	100%	575	100%	575	100%	575	100%	yes	yes	no	no	yes	TIFF	400-300dpi	pdf	200 dpi	YES	OPAC (Marc21)	0	
				Medical literature	volumes	6	6	book	33	33	33	100%	33	100%	33	100%	33	100%	33	100%	33	100%	yes	yes	no	no	yes	TIFF	400-300dpi	pdf	200 dpi	YES	OPAC (Marc21)	0	
Welfare literature	volumes	42	42	book	138	138	138	100%	138	100%	138	100%	138	100%	138	100%	138	100%	yes	yes	no	no	yes	TIFF	400-300dpi	pdf	200 dpi	YES	OPAC (Marc21)	0					
Popular literature	volumes	6	6	book	0	0	0	0%	0	0%	0	0%	0	0%	0	0%	0	0%	yes	yes	no	no	yes	TIFF	400-300dpi	pdf	200 dpi	YES	OPAC (Marc21)	0					
KBR	11.02.2014	Songbooks and music sheet	250	Manuscript Music book	items	0	0	1	1	100%	1	100%	1	100%	1	100%	1	100%	1	100%	yes	yes	no	no	yes	TIFF	400-300dpi	pdf	200 dpi	NO	OPAC (Marc21)	3,025			
				Manuscript Music sheet	items	26	26	0	0	0	0%	0	0%	0	0%	0	0%	0	0%	0	0%	yes	yes	no	no	yes	TIFF	400-300dpi	pdf	200 dpi	NO	OPAC (Marc21)	0		
				Printed Music Book	items	0	0	24	24	24	100%	24	100%	24	100%	24	100%	24	100%	24	100%	yes	yes	no	no	yes	TIFF	400-300dpi	pdf	200 dpi	YES	OPAC (Marc21)	0		
				Printed Music Sheet	items	220	220	216	216	216	98%	216	98%	216	98%	216	98%	216	98%	216	98%	yes	yes	no	no	yes	TIFF	400-300dpi	pdf	200 dpi	YES	OPAC (Marc21)	0		
KBR	14.02.2014	Publicistic Material	1285	Newspapers	volumes	400	400	0	0	0%	0	0%	0	0%	0	0%	0	0%	0	0%	yes	yes	no	no	yes	TIFF	400-300 dpi	pdf	200 dpi	YES	OPAC (Marc21)	0			
				Other periodicals	volumes	200	200	0	0	0	0%	0	0%	0	0%	0	0%	0	0%	0	0%	yes	yes	no	no	yes	TIFF	400-300dpi	pdf	200 dpi	YES	OPAC (Marc21)	0		
				Pamphlets and Leaflets	items	100	100	79	79	79	79%	79	79%	79	79%	79	79%	79	79%	79	79%	yes	yes	no	no	yes	TIFF	400-300dpi	pdf	200 dpi	YES	OPAC (Marc21)	0		
KBR	28/02/2014	Maps	350	Printed Maps	items	331	331	map	580	580	580	100%	580	100%	580	100%	580	100%	580	100%	yes	yes	no	no	yes	TIFF	600 dpi	KBR viewer	300 dpi	NO	OPAC (Marc21)	580			
				Atlas	items	9	9	map	0	0	0	0%	0	0%	0	0%	0	0%	0	0%	0	0%	yes	yes	no	no	yes	TIFF	600dpi	KBR viewer	300 dpi	NO	OPAC (Marc21)	0	
KBR	14/11/2013	Manuscript material	0	Other Geographic material	items	10	10	map	0	0	0	0%	0	0%	0	0%	0	0%	0	0%	yes	yes	no	no	yes	TIFF	600dpi	KBR viewer	300 dpi	NO	OPAC (Marc21)	0			
				War postcards	items	0	0	0	0	0	0%	0	0%	0	0%	0	0%	0	0%	0	0%	yes	yes	no	no	yes	TIFF	600dpi	KBR viewer	300 dpi	NO	OPAC (Marc21)	0		
				War journals	items	0	0	3	3	3	100%	3	100%	3	100%	3	100%	3	100%	3	100%	yes	yes	no	no	yes	TIFF	600dpi	KBR viewer	300 dpi	NO	OPAC (Marc21)	0		
				Diaries	items	0	0	6	6	6	100%	6	100%	6	100%	6	100%	6	100%	6	100%	yes	yes	no	no	yes	TIFF	600dpi	KBR viewer	300 dpi	NO	OPAC (Marc21)	880		
KBR	09.01.2014	Picture material	600	Drawing, sketchbooks	items	100	100	289	289	289	100%	289	100%	289	100%	289	100%	289	100%	289	100%	yes	yes	no	no	yes	TIFF	400-300 dpi	KBR viewer	300 dpi	NO	OPAC (Marc21)	289		
				Posters	items	150	150	540	540	540	100%	540	100%	540	100%	540	100%	540	100%	540	100%	yes	yes	no	no	yes	TIFF	400-300 dpi	KBR viewer	300 dpi	NO	OPAC (Marc21)	540		
				Photographs	items	200	200	350	350	350	100%	350	100%	350	100%	350	100%	350	100%	350	100%	yes	yes	no	no	yes	TIFF	400-300dpi	KBR viewer	300 dpi	NO	OPAC (Marc21)	350		
				Medals, coins	items	105	105	5,039	5,039	5,039	100%	5,039	100%	5,039	100%	5,039	100%	5,039	100%	5,039	100%	yes	yes	no	no	yes	TIFF	400-300dpi	KBR viewer	300 dpi	NO	OPAC (Marc21)	10,078		
				Other Picture Material (pictures / glass)	items	45	45	0	0	0	0%	0	0%	0	0%	0	0%	0	0%	0	0%	yes	yes	no	no	yes	TIFF	400-300dpi	KBR viewer	300 dpi	NO	OPAC (Marc21)	0		
KBR	11.02.2014	Misc.	1854	Printed letters	items	104	104	18	18	18	17%	18	17%	18	17%	18	17%	18	17%	18	17%	yes	yes	no	no	yes	TIFF	400-300dpi	pdf	200 dpi	YES	OPAC (Marc21)	1,814		
				Biographies	items	200	200	0	0	0	0%	0	0%	0	0%	0	0%	0	0%	0	0%	yes	yes	no	no	yes	TIFF	400-300dpi	pdf	200 dpi	YES	OPAC (Marc21)	0		
				Reports	items	180	180	26	26	26	14%	26	14%	26	14%	26	14%	26	14%	26	14%	yes	yes	no	no	yes	TIFF	400-300dpi	pdf	200 dpi	YES	OPAC (Marc21)	0		
				Journals	items	170	170	0	0	0	0%	0	0%	0	0%	0	0%	0	0%	0	0%	0	0%	yes	yes	no	no	yes	TIFF	400-300dpi	pdf	200 dpi	YES	OPAC (Marc21)	0
				Memoirs	items	150	150	0	0	0	0%	0	0%	0	0%	0	0%	0	0%	0	0%	0	0%	yes	yes	no	no	yes	TIFF	400-300dpi	pdf	200 dpi	YES	OPAC (Marc21)	0
				Episodes	items	50	50	0	0	0	0%	0	0%	0	0%	0	0%	0	0%	0	0%	0	0%	yes	yes	no	no	yes	TIFF	400-300dpi	pdf	200 dpi	YES	OPAC (Marc21)	0
				Other	items	1,000	1,000	52	52	52	5%	52	5%	52	5%	52	5%	52	5%	52	5%	52	5%	yes	yes	no	no	yes	TIFF	400-300dpi	pdf	200 dpi	YES	OPAC (Marc21)	0
KBR		Postcards	3400	Postcards	items	3,400	3,400	5,518	5,518	5,518	100%	5,518	100%	5,518	100%	5,518	100%	5,518	100%	yes	yes	no	no	yes	TIFF	400-300 dpi	KBR viewer	300dpi	NO	OPAC (Marc21)	11,036				
AML	20.08.2013	AML	0	Picture material (Glass negatives and pictures)	items	0	0	67	67	67	100%	67	100%	67	100%	67	100%	67	100%	yes	yes	no	no	yes	TIFF	400-300 dpi	AML viewer	200 dpi	NO	OAI PMH	67				
AML	20.08.2013	AML	0	Bound volumes	items	0	0	47	47	47	100%	47	100%	47	100%	47	100%	47	100%	yes	yes	no	no	yes	TIFF	400-300 dpi	AML viewer	200 dpi	Yes	OAI PMH	7,189				
AML	21/11/2013	AML	0	Manuscripts	items	0	0	122	122	122																									

BL

Provider	Last date of reporting	Source Type	Proposed Source Quantity According to Description of Work	Collection Description (DoW extended)	Unit of measurement (page, volume, issue or item)	Number of Items foreseen according to DoW	NUMBER OF OBJECTS like books, songbooks, albums, letters etc.			Production Monitoring Summary										Format & Quality					Metadata	Definitive number of scans						
							Please enter (only) the INITIAL number of OBJECTS here (like 648) relating to the DoW	Please enter the OBJECT TYPE (like book, leaflet or else), but neither ITEM nor PAGES	Please enter (only) the FINAL number of OBJECTS here (like 648)	Selected		Digitised		Ready for Harvest (Dig. Obj. +Metadata avail)		Ingested in Europeana		Controlled vocabulary metadata or information on a certain area provided with collection					master copy				access copy					
										amount	percentage	amount	percentage	amount	percentage	amount	percentage	What? ECI418 subject headings	What? ECI418 object types	Who? (e.g. VIAF, PND or else)	Where? (e.g. geo-coordinates, other spatial information)	When? (dates, times etc.)	format	resolution			format	resolution	OCR			
BL	25/02/2014	Printed books	498	Australasia n Collections	volumes	17	17	books	17	17	100%	17	100%	17	100%	17	100%	100%	100%						TIFF	300dpi	DZI or JP2000	300dpi	OCR	MARC	8300	
				Canadian Collections	volumes	33	28	books	28	28	85%	28	85%	28	85%	28	0%	100%	100%						TIFF	300dpi	DZI or JP2001	300dpi	OCR	MARC	9349	
				India Office Monographs	volumes	3	387	books	500	500	500	100%	500	100%	500	100%	500	100%	100%	100%						TIFF	300dpi	DZI or JP2002	300dpi	OCR	MARC	2650
				SE European Collections	volumes	128	128	books	124	124	124	97%	124	97%	124	97%	124	97%	100%	100%						TIFF	300dpi	DZI or JP2003	300dpi	OCR	MARC	18900
				German Collections	volumes	33	33	books	33	33	33	100%	33	100%	33	100%	33	100%	100%	100%						TIFF	300dpi	DZI or JP2004	300dpi	OCR	MARC	4000
				International Office	volumes	180	124	books	124	124	124	69%	124	69%	124	69%	124	69%	100%	100%						TIFF	300dpi	DZI or JP2005	300dpi	OCR	MARC	62000
				Printed Historical	volumes	165	155	books	155	155	155	94%	155	94%	155	94%	155	94%	100%	100%						TIFF	300dpi	DZI or JP2006	300dpi	OCR	MARC	20500
				Printed Literary	volumes	127	127	books	140	140	140	100%	140	100%	140	100%	140	100%	100%	100%						TIFF	300dpi	DZI or JP2007	300dpi	OCR	MARC	23348
		French Collections	volumes	7	7	books	6	6	6	86%	6	86%	6	86%	6	86%	100%	100%						TIFF	300dpi	DZI or JP2008	300dpi	OCR	MARC	1000		
BL		Songbooks and music sheet (music scores)	2500	Music Collections - Printed Music	items	500	197	music scores	197	197	39%	197	39%	It will be ready for harvest end of May 2014 because of internal technical issues	#BEZUG!	It will be ready for ingest end of May 2014 because of internal technical issues	#BEZUG!	100%	100%						TIFF	300dpi	DZI or JP2009	300dpi		MARC	6700	
BL	25/02/2014	Publicistic Material	826	Periodicals	issues	1.200	1.200	journals	1.234	1.234	100%	1.234	100%	1.234	100%	1.234	100%	100%	100%						TIFF	300dpi	DZI or JP2010	300dpi	OCR	MARC	23500	
Pamphlets and Leaflets				items	355	355	leaflets	200	200	200	56%	200	56%	200	56%	200	56%	100%	100%						TIFF	300dpi	DZI or JP2011	300dpi	OCR	MARC	1200	
Maps		items	70	70	maps	72	72	72	100%	72	100%	72	100%	72	100%	100%	100%						TIFF	300dpi	DZI or JP2012	300dpi		MARC	272			
			India Office (Archival)	items	650	650	Manuscripts	685	685	685	100%	685	100%	685	100%	685	100%	100%	100%						TIFF	300dpi	DZI or JP2013	300dpi		XLS	13200	
BL	25/02/2014	Manuscript material	117	Historical Manuscript Papers	items	2.400	2.400	Manuscripts	2.500	2.500	100%	2.500	100%	2.500	100%	2.500	100%	100%	100%						TIFF	300dpi	DZI or JP2014	300dpi		XLS	41000	
				Modern Literary Papers	items	1.100	1.100	Manuscripts	1.100	1.100	1.100	100%	1.100	100%	1.100	100%	1.100	100%	100%	100%						TIFF	300dpi	DZI or JP2015	300dpi		XLS	3200
				LC Plays	items	0	0		0	0	0	0%	0	0%	0	0%	0	0%	100%	100%						TIFF	300dpi	DZI or JP2016	300dpi		XSL	
				Music Collections	items	50	50	Manuscripts	78	78	78	100%	78	100%	78	100%	78	100%	100%	100%						TIFF	300dpi	DZI or JP2017	300dpi		XLS	6500
BL	25/02/2014	Picture material	2900	Drawing, sketchbooks	items	10		Prints	16	16	100%	16	100%	16	100%	16	100%	100%	100%						TIFF	300dpi	DZI or JP2018	300dpi		XLS		
	25/02/2014			Posters	items	70	70	Posters	162	162	162	100%	162	100%	162	100%	162	100%	100%	100%						TIFF	300dpi	DZI or JP2019	300dpi		XLS	162
	25/02/2014			Photographs	items	1.500	1.500	Photographs	2.276	2.276	2.276	100%	2.276	100%	2.276	100%	2.276	100%	100%	100%						TIFF	300dpi	DZI or JP2020	300dpi		XLS	2213
	25/02/2014			Postcards	items	160	160	Postcards	182	182	182	100%	182	100%	182	100%	182	100%	100%	100%						TIFF	300dpi	DZI or JP2021	300dpi		XLS	364
BL	25/02/2014	Misc.	1755		items	0	0	0	0	0%	0	0%	0	0%	0	0%																
					items	0	0	0	0	0%	0	0%	0	0%	0	0%																
					items	0	0	0	0	0%	0	0%	0	0%	0	0%																
					items	0	0	0	0	0%	0	0%	0	0%	0	0%																
			8.758			8.758	8.758		9.829	9.829	100%	9.829	100%	9.829	98%	9.829	98%	100%	100%											248.358		

KB

Provider	Last date of reporting	Source Type	Proposed Source Quantity According to Description of Work	Collection Description (DoW extended)	Unit of measurement (page, volume, issue or item)	Number of items foreseen according to DoW	NUMBER OF OBJECTS like books, songbooks, albums, letters etc.			Actual number of items to be digitised	Production Monitoring Summary								Format & Quality					Metadata	Definitive number of scans					
							Please enter (only) the INITIAL number of OBJECTS here (like 648) relating to the DoW	Please enter the OBJECT TYPE (like book, leaflet or etc.), but neither ITEM nor PAGES	Please enter (only) the FINAL number of OBJECTS here (like 648)		Selected		Digitised		Ready for Harvest (Dig. Obj. +Metadata avail)		Ingested in Europeana		Controlled vocabulary metadata or information on a certain area provided with collection							master copy		access copy		
											amount	percentage	amount	percentage	amount	percentage	amount	percentage	amount	percentage	What? EC1418 subject headings	What? EC1418 object types	Who? (e.g. VIAF, PND or else)			Where? (e.g. geo-coordinates, other spatial information)	When? (dates, times etc)	format	resolution	format
KB	0904/2014	Publicistic Material	496	Pamphlets and Leaflets	Items	496	496	leaflet	863	863	863	100%	863	100%	863	100%	0	0%	LCSH top level only (and local)	Leaf	0%	0%	0%	tiff uncompr	400	tiff pyramide	3-400	no	ESE	4.000
KB	0904/2014	Picture material	5722	Drawing, sketchbooks	Items	50	50	drawing	30	30	30	60%	30	60%	30	60%	30	60%	LCSH top level only (and local)	Drawing	0%	0%	0%	tiff uncompr	400	tiff pyramide	3-400	no	ESE	58
				Posters	Items	70	70	poster	72	72	72	100%	72	100%	72	100%	72	100%	LCSH top level only (and local)	Poster	0%	0%	0%	tiff uncompr	400	tiff pyramide	3-400	no	ESE	144
				Photographs	Items	5.102	5.102	photograph	5.282	5.282	5.282	100%	5.282	100%	5.282	100%	5.282	100%	LCSH top level only (and local)	Photograph	0%	0%	0%	tiff uncompr	400	tiff pyramide	3-400	no	ESE	8.710
				Postcards	Items	300	300	postcard	596	596	596	100%	596	100%	596	100%	596	100%	LCSH top level only (and local)	Postcard	0%	0%	0%	tiff uncompr	400	tiff pyramide	3-400	no	ESE	1.140
KB	0904/2014	Misc.	954	Other Picture Material (pictures/ glass)	Items	200	200	graphics, fotografie, print	638	638	638	100%	638	100%	638	100%	638	100%	LCSH top level only (and local)	Graphics	0%	0%	0%	tiff uncompr	400	tiff pyramide	3-400	no	ESE	1.072
				Printed letters	Items	100	100	printed letter	34	34	34	34%	34	34%	34	34%	0	0%	LCSH top level only (and local)	Book	0%	0%	0%	tiff uncompr	400	pdf	pdf	yes	ESE	0
				Biographies	Items	100	100	biographies	14	14	14	14%	14	14%	14	14%	0	0%	LCSH top level only (and local)	Book	0%	0%	0%	tiff uncompr	400	pdf	pdf	yes	ESE	0
				Reports	Items	100	100	report	104	104	104	100%	104	100%	104	100%	0	0%	LCSH top level only (and local)	Book	0%	0%	0%	tiff uncompr	400	pdf	pdf	yes	ESE	0
				Journals	Items	100	100	journal	42	42	42	42%	42	42%	42	42%	0	0%	LCSH top level only (and local)	Book	0%	0%	0%	tiff uncompr	400	pdf	pdf	yes	ESE	0
				Memoirs	Items	100	100	memoir	80	80	80	80%	80	80%	80	80%	0	0%	LCSH top level only (and local)	Book	0%	0%	0%	tiff uncompr	400	pdf	pdf	yes	ESE	0
				Episodes	Items	100	100	episode	40	40	40	40%	40	40%	40	40%	0	0%	LCSH top level only (and local)	Book	0%	0%	0%	tiff uncompr	400	pdf	pdf	yes	ESE	0
				Other	Items	354	354	other	637	637	637	100%	637	100%	637	100%	0	0%	LCSH top level only (and local subjects)	Book	0%	0%	0%	tiff uncompr	400	pdf	pdf	yes	ESE	141.824
KB	0904/2014	Maps	0	Maps	Items	0	0	map	180	180	180	100%	180	100%	180	100%	180	100%	LCSH top level only (and local subjects)	Map	0%	0%	0%	tiff uncompr	400	tiff pyramide	3-400	no	ESE	180
KB	0904/2014	Printed books	0	Books	Items	0	0	fiction	48	48	48	100%	48	100%	48	100%	48	100%	LCSH top level only (and local subjects)	Book	0%	0%	0%	tiff uncompr	400	pdf	pdf	yes	ESE	0
						7.172	7.172	7.172	8.660	8.660	8.660	100%	8.660	100%	8.660	100%	6.798	78%											157.128	

ONB

Provider	Last date of reporting	Source Type	Proposed Source Quantity According to Description of Work	Collection Description (DOW extended)	Unit of measurement (page, volume, issue or item)	Number of items foreseen according to DOW	NUMBER OF OBJECTS like books, songbooks, albums, letters etc.			Actual number of items to be digitised	Production Monitoring Summary								Format & Quality					Metadata	number of scans					
							Please enter (only) the INITIAL number of OBJECTS here (like 648) relating to the DOW	Please enter the OBJECT TYPE (like book, leaflet or else) but neither ITEM nor PAGES	Please enter (only) the FINAL number of OBJECTS here (like 648)		Selected		Digitised		Ready for Harvest (Dig. Obj. +Metadata avail)		Ingested in Europeana		Controlled vocabulary metadata or information on a certain area provided with collection							master copy		access copy		
											amount	percentage	amount	percentage	amount	percentage	amount	percentage	amount	percentage	What? EC1418 subject headings	What? EC1418 object types	Who? (e.g. VIAF, PND or else)			Where? (e.g. geo-coordinates, other spatial information)	When? (dates, times etc.)	format	resolution	format
ONB	29.04.2014	Printed books	70	Books from DP Planned Arrangements	volumes	70	70	book	39	39	56%	39	56%	39	56%	39	56%	no	yes	no	no	yes	JPG	300 dpi	JPG	300 dpi	no	ESE	2.594	
ONB	29.04.2014	Songbooks and music sheet	363	Manuscript Music book	items	363	363	song transcript	222	222	61%	222	61%	222	61%	222	61%	no	yes	no	no	yes	TIFF/JPG	300 dpi	JPG	300 dpi	no	ESE	751	
ONB	29.04.2014	Publicistic Material	29.000	Newspapers	issues	20.000	20.000	newspaper	23.866	23.866	100%	23.866	100%	23.866	100%	23.866	100%	no	yes	no	no	yes	TIFF/JPG	300 dpi	JPG	300 dpi	no	ESE	380.826	
				Other periodicals	items	1.500	1.500	special edition of newspaper	1.208	1.208	1.208	81%	1.208	81%	1.208	81%	1.208	81%	no	yes	no	no	yes	JPG	300 dpi	JPG	300 dpi	no	ESE	1.216
				Pamphlets and leaflets	pages	1.500	1.500	pamphlet, leaflet	1.099	1.099	1.099	73%	1.099	73%	1.099	73%	1.099	73%	no	yes	no	no	yes	JPG	300 dpi	JPG	300 dpi	no	ESE	1.811
ONB	29.04.2014	Picture material	34500	Other publicistic material (community newsletters, specials announcements of companies and societies,	items	6.000	6.000	community newsletter, special announcement, brochure, folder, leaflet, printing etc.	7.869	7.869	100%	7.869	100%	7.869	100%	7.869	100%	no	yes	no	no	yes	JPG	300 dpi	JPG	300 dpi	no	ESE	25.412	
				Posters	items	18.000	18.000	poster	7.383	7.383	7.383	41%	7.383	41%	7.383	41%	6.557	36%	no	yes	no	no	yes	TIFF/JPG	150-300dpi	JPG	150dpi	no	DC	7.277
				Photographs	items	15.000	15.000	photograph	37.274	37.274	37.274	100%	37.274	100%	37.274	100%	37.077	99%	no	yes	no	no	yes	TIFF/JPG	300dpi	JPG	300 dpi	no	DC	37.280
ONB	29.04.2014	Picture material	34500	Small form graphics	items	1.000	1.000	small form graphic	832	832	83%	832	83%	832	83%	832	83%	no	yes	no	no	yes	TIFF	300dpi	JPG	300 dpi	no	DC	942	
				Children's drawings	items	500	500	children's drawing	238	238	238	48%	238	48%	238	48%	238	48%	no	yes	no	no	yes	JPG	300dpi	JPG	300 dpi	no	DC	238
						63.933	63.933	63.933	80.030	80.030	100%	80.030	100%	80.030	100%	79.007	99%												458.497	

Provider	Last date of reporting	Source Type	Proposed Source Quantity According to Description of Work	Collection Description (DoW extended)	Unit of measurement (page, volume, issue or item)	Number of items foreseen according to DoW	NUMBER OF OBJECTS like books, songbooks, albums, letters etc.			Actual number of items to be digitised	Production Monitoring Summary								Format & Quality					Metadata	Definitive number of scans									
							Please enter (only) the INITIAL number of OBJECTS here (like 648) relating to the DOW	Please enter the OBJECT TYPE (like book, leaflet or else), but neither ITEM nor PAGES	Please enter (only) the FINAL number of OBJECTS here (like 648)		Selected		Digitised		Ready for Harvest (Dig. Obj. +Metadata avail)		Ingested in Europeana		Controlled vocabulary metadata or information on a certain area provided with collection							master copy		access copy						
											amount	percentage	amount	percentage	amount	percentage	amount	percentage	amount	percentage	What? ECI418 subject headings	What? ECI418 object types	Who? (e.g. VIAF, PND or else)			Where? (e.g. geo-coordinates, other spatial information)	When? (dates, times etc)	format	resolution	format	resolution	OCR		
NLS	25/04/2014	Printed books	405	Reference works	volumes	20	20	book	20	20	20	100%	20	100%	20	100%	20	100%	yes	yes	no	where available, uncontrolled	where available, uncontrolled	JPEG	300 dpi	JPEG	300 dpi	some units	MARC	37.385				
				Fiction	volumes	200	200	book	84	84	84	42%	84	42%	84	42%	84	42%	84	42%	84	42%	84	42%	84	42%	84	42%	84	42%	84	42%	84	42%
				Light fiction	volumes	50	50	book	96	96	96	100%	96	100%	96	100%	96	100%	96	100%	96	100%	96	100%	96	100%	96	100%	96	100%	96	100%	96	100%
				Children's literature	volumes	20	20	book	20	20	20	100%	20	100%	20	100%	20	100%	20	100%	20	100%	20	100%	20	100%	20	100%	20	100%	20	100%	20	100%
				Military literature, guides, manuals, war libraries	volumes	5	5	book	123	123	123	100%	123	100%	123	100%	123	100%	123	100%	123	100%	123	100%	123	100%	123	100%	123	100%	123	100%	123	100%
				Daily Life (cookbooks, guides, manuals)	volumes	50	50	book	50	50	50	100%	50	100%	50	100%	50	100%	50	100%	50	100%	50	100%	50	100%	50	100%	50	100%	50	100%	50	100%
				Travel literature	volumes	10	10	0	0	0	0%	0	0%	0	0%	0	0%	0	0%	0	0%	0	0%	0	0%	0	0%	0	0%	0	0%	0	0%	0
Religious literature	volumes	50	50	book	10	10	10	20%	10	20%	10	20%	10	20%	10	20%	10	20%	10	20%	10	20%	10	20%	10	20%	10	20%	10	20%				
NLS	16/04/2014	Songbooks and sheet music	100	Printed Music Book	volumes	50	50	0	0	0%	0	0%	0	0%	0	0%	0	0%	0	0%	0	0%	0	0%	0	0%	0	0%	0	0%				
				Printed Music Sheet	volumes	50	50	0	0	0%	0	0%	0	0%	0	0%	0	0%	0	0%	0	0%	0	0%	0	0%	0	0%	0	0%	0	0%		
NLS	16/04/2014	Publicistic Material	450	Newspapers	volumes	120	120	newspaper	1.153	1.153	1.153	100%	1.153	100%	1.153	100%	1.153	100%	yes	yes	no	where available, Geonames	where available, uncontrolled	JPEG	300 dpi	JPEG	300 dpi	no	DC RDF	3.359				
				Other periodicals	volumes	80	80	journal	12	12	12	15%	12	15%	12	15%	12	15%	12	15%	12	15%	12	15%	12	15%	12	15%	12	15%	12	15%		
				Pamphlets and Leaflets	items	100	100	0	0	0	0%	0	0%	0	0%	0	0%	0	0%	0	0%	0	0%	0	0%	0	0%	0	0%	0	0%	0	0%	
				Other publicistic material (community newsletters, specials announcements of companies and societies, posters, commemorative announcements)	items	150	150	0	0	0	0%	0	0%	0	0%	0	0%	0	0%	0	0%	0	0%	0	0%	0	0%	0	0%	0	0%	0	0%	
NLS	16/04/2014	Maps	40	Manuscript Maps	items	10	10	0	0	0%	0	0%	0	0%	0	0%	0	0%	0	0%	0	0%	0	0%	0	0%	0	0%	0	0%				
				Printed Maps	items	30	30	map	58	58	58	100%	58	100%	58	100%	58	100%	58	100%	58	100%	58	100%	58	100%	58	100%	58	100%	58	100%		
NLS	16/04/2014	Manuscript material	100	War postcards	items	40	40	postcard	0	0	0%	0	0%	0	0%	0	0%	0	0%	0	0%	0	0%	0	0%	0	0%	0	0%	0	0%			
				War journals	volumes	10	10	Trench journal	0	0	0	0%	0	0%	0	0%	0	0%	0	0%	0	0%	0	0%	0	0%	0	0%	0	0%	0	0%		
				Diaries	volumes	40	40	diary	65	65	65	100%	65	100%	65	100%	65	100%	65	100%	65	100%	65	100%	65	100%	65	100%	65	100%	65	100%		
				Letters	items	10	10	letter	37	37	37	100%	37	100%	37	100%	37	100%	37	100%	37	100%	37	100%	37	100%	37	100%	37	100%	37	100%		
NLS	16/04/2014	Picture material	200	Drawing, sketchbooks	items	10	10	sketchbook	1	1	1	10%	1	10%	1	10%	1	10%	yes	yes	no	no	no	JPEG	300 dpi	JPEG	300 dpi	no	MARC/DC	in MISC				
				Posters	items	50	50	poster	25	25	25	50%	25	50%	25	50%	25	50%	25	50%	25	50%	25	50%	25	50%	25	50%	25	50%	25	50%		
				Photographs	items	80	80	photograph	92	92	92	100%	92	100%	92	100%	92	100%	92	100%	92	100%	92	100%	92	100%	92	100%	92	100%	92	100%		
				Postcards	items	60	60	postcard	103	103	103	100%	103	100%	103	100%	103	100%	103	100%	103	100%	103	100%	103	100%	103	100%	103	100%	103	100%		
				Biographies	items	50	50	0	0	0	0%	0	0%	0	0%	0	0%	0	0%	0	0%	0	0%	0	0%	0	0%	0	0%	0	0%	0	0%	
NLS	16/04/2014	Misc.	100	Reports	items	30	30	leaf, Graphics, poster, photograph, notebook	117	117	117	100%	117	100%	117	100%	117	100%	117	100%	117	100%	117	100%	117	100%	117	100%	117	100%				
				Journals	volumes	20	20	journal, newspaper	0	0	0	0%	0	0%	0	0%	0	0%	0	0%	0	0%	0	0%	0	0%	0	0%	0	0%	0	0%		
						1395	1395	2066	2066	2066	100%	2066	100%	2066	100%	2066	100%	2066	100%	2066	100%	2066	100%	2066	100%	2066	100%	2066	100%	2066	100%			

Provider	Last date of reporting	Source Type	Proposed Source Quantity According to Description of Work	Collection Description (DoW extended)	Unit of measurement (page, volume, issue or item)	Number of items foreseen according to DoW	NUMBER OF OBJECTS like books, songbooks, albums, letters etc. according to DoW			Actual number of items to be digitised	Production Monitoring Summary								Format & Quality					Metadata	Definitive number of scans					
							Please enter (only) the INITIAL number of OBJECTS here (like 648) relating to the DOW	Please enter the OBJECT TYPE (like book, leaflet or else), but neither ITEM nor PAGES	Please enter (only) the FINAL number of OBJECTS here (like 648)		Selected		Digitised		Ready for Harvest (Dig. Obj. +Metadata avail)		Ingested in Europeana		Controlled vocabulary metadata or information on a certain area provided with collection							master copy		access copy		
											amount	percentage	amount	percentage	amount	percentage	amount	percentage	amount	percentage	What? EC1418 subject headings	What? EC1418 object types	Who? (e.g. VIAF, PND or else)			Where? (e.g. geo-coordinates, other spatial information)	When? (dates, times etc)	format	resolution	format
ICCU	15/04/2014	picture material	84.800	Photographs Album	volume	0	0	Album	165	165	165	100%	165	100%	165	100%	165	100%	Yes	Yes	If available	If available	Yes	TIFF	600 dpi	JPG	600 dpi	no	DC	11.771
ICCU	15/04/2014			Photographs	item	81.600	81.600	photos	47.455	47.455	47.455	58%	47.455	58%	47.455	58%	47.455	58%	Yes	Yes	If available	If available	Yes	TIFF	600 dpi	JPG	600 dpi	no	DC	47.767
ICCU				Other picture material	item	150	0	picture	0	0	0	0%	0	0%	0	0%	0	0%			If available	no	Yes	TIFF	600 dpi	JPG	600 dpi	no	DC	0
ICCU	15/04/2014			Postcards	item	2.000	2.000	postcard	4.427	4.427	4.427	100%	4.427	100%	4.427	100%	4.427	100%	Yes	Yes	If available	If available	Yes	TIFF	600 dpi	JPG	600 dpi	no	DC	8.460
ICCU	15/04/2014			Drawing, sketchbooks	item	450	450	Drawing	228	228	228	51%	228	51%	228	51%	228	51%	Yes	Yes	If available	no	Yes	TIFF	600 dpi	JPG	600 dpi	no	DC	229
ICCU				Paintings (military portraits, propaganda portraits)	item	300	300	painting	0	0	0	0%	0	0%	0	0%	0	0%	Yes	Yes	If available	no	Yes	TIFF	600 dpi	JPG	600 dpi	no	DC	0
ICCU				Other Picture Material (pictures/glass plates), memorabilia	item	300	300	pictures	0	0	0	0%	0	0%	0	0%	0	0%	Yes	Yes	If available	no	Yes	TIFF	600 dpi	JPG	600 dpi	no	DC	0
ICCU	15/04/2014			Posters	item	0	0	poster	1.370	1.370	1.370	100%	1.370	100%	1.370	100%	1.370	100%	Yes	Yes	If available	no	Yes	TIFF	600 dpi	JPG	600 dpi	no	DC	1.373
ICCU	15/04/2014	Other Picture Material (pictures/glass plates)	item	0	0	calendar	18	18	18	100%	18	100%	18	100%	18	100%	Yes	Yes	If available	no	Yes	TIFF	600 dpi	JPG	600 dpi	no	DC	87		
ICCU	15/04/2014	Songbooks and music sheet	600	Printed Music Sheet	item	600	155	music sheet	155	155	155	26%	155	26%	155	26%	155	26%	Yes	Yes	If available	no	Yes	TIFF	600 dpi	JPG	600 dpi	no	DC	1.260
ICCU	15/04/2014	Publicistic Material	26.500	Pamphlets and Leaflets	item	3.500	91	pamphlet	90	90	90	3%	90	3%	90	3%	90	3%	Yes	Yes	If available	no	Yes	TIFF	600 dpi	JPG	600 dpi	no	DC	2.528
ICCU	15/04/2014			Leaflets Other publicistic material (community newsletters, special announcements of companies and societies, text posters, commemorative announcements)	item	500	500	leaflet	2.241	2.241	2.241	100%	2.241	100%	2.241	100%	2.241	100%	Yes	Yes	If available	no	Yes	TIFF	600 dpi	JPG	600 dpi	no	DC	3.474
ICCU	15/04/2014			Periodicals Trench Journal	item	1.500	764	trench journal	905	905	905	60%	905	60%	905	60%	905	60%	Yes	Yes	If available	no	Yes	TIFF	600 dpi	JPG	600 dpi	no	DC	4.287
ICCU	15/04/2014			Other periodicals Newspaper	pages	21.000	1.245	periodicals	1.256	19.486	19.486	93%	19.486	93%	19.486	93%	19.486	93%	Yes	Yes	If available	If available	Yes	TIFF	600 dpi	JPG	600 dpi	no	MARC/DC	19.486
ICCU	15/04/2014	manuscript material	134.650	Memoirs Diary	item	13.250	36	diary	37	37	37	0%	37	0%	37	0%	37	0%	Yes	Yes	If available	no	Yes	TIFF	600 dpi	JPG	600 dpi	no	DC	976
ICCU	15/04/2014			Other manuscript materials	pages	50.000	50.000	manuscript document	154.560	154.560	154.560	100%	154.560	100%	154.560	100%	154.560	100%	Yes	Yes	If available	no	Yes	TIFF	600 dpi	JPG	600 dpi	no	DC	154.560
ICCU				Extra manuscript materials	pages	0						#DIV/0!																		
ICCU				Letters	pages	71.400	0		0	0	0	0%	0	0%	0	0%	0	0%	Yes	Yes	If available	no	Yes	TIFF	600 dpi	JPG	600 dpi	no	DC	0
ICCU	15/04/2014	MISC	50	Printed Maps	item	50		printed maps	29	29	29	58%	29	58%	29	58%	29	58%	Yes	Yes	If available	no	Yes	TIFF	600 dpi	JPG	600 dpi	no	DC	40
ICCU	15/04/2014			Album miscellaneous	item	0	2	miscellaneous	2	2	2	100%	2	100%	2	100%	2	100%	2	100%										
			246.600			246.600	137.443		212.938	231.168	231.168	94%	231.168	94%	231.168	94%	231.168	94%												256.686