



Figure 1 Structure of complexes **1** and **2**.

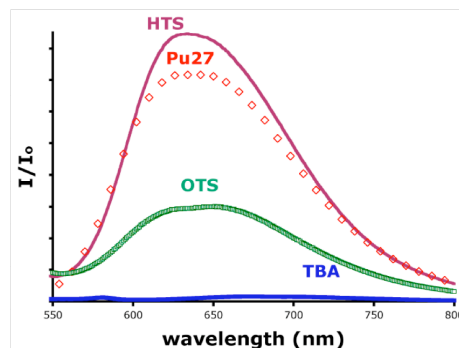
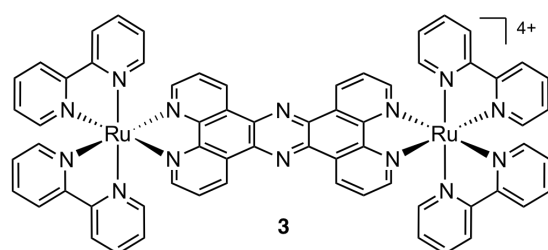


Figure 2 Structure of complex **3** and its optical response on binding to various quadruplexes

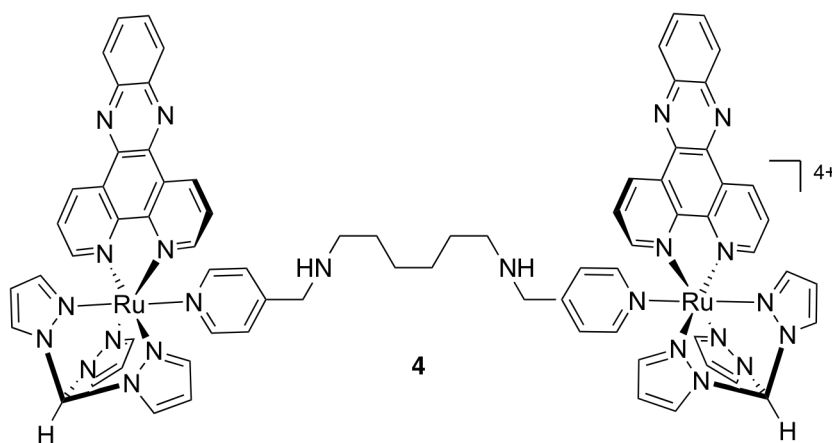


Figure 3 dinuclear complex **4** shows a DNA binding affinity of $>10^7 \text{ M}^{-1}$

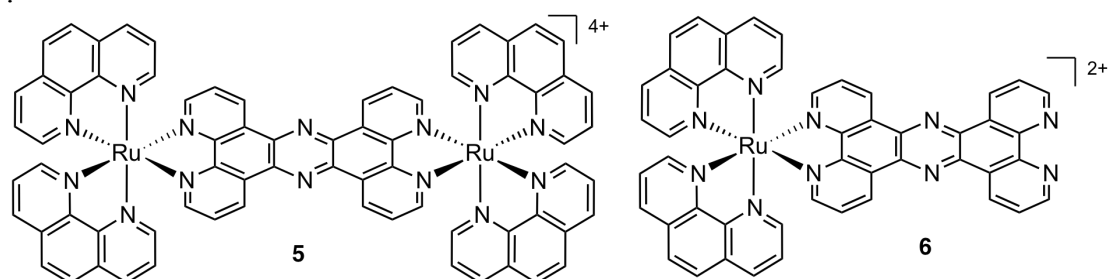


Figure 4 complexes **5** and **6** are both in cellulo DNA probes., complex **6** is also cytotoxic.