

Proposal/Contract No.: **022653**

Project acronym: **CARERA**

Project title: **The Impact of CAP Reform on the Employment Levels in Rural Areas**

Instrument: **Specific Targeted Research Project**

Thematic Priority: 8.1.B1.1.: **Sustainable Management of Europe's Natural Resources -
The Modernisation and Sustainability of Agriculture and Forestry**

CARERA

FINAL ACTIVITY REPORT

Period covered: from 1/03/2006 to 30/04/2008

Date of preparation: May 2008

Start date of project: 1/03/2006

Duration: 26 months

Project coordinator name: **Prof. Konstadinos Mattas**

Project coordinator organization name: **Aristotle University of Thessaloniki,**

Project Web Site: <http://www.eng.auth.gr/mattas/carera.htm>

EUROPEAN PROJECT CARERA (CT022653)

Prof. Konstadinos Mattas, Coordinator

Aristotle University of Thessaloniki – School of Agriculture

University Campus - P.O. Box: 225 54124 Thessaloniki - Greece

Tel +30 2310 998807 - Fax +30 2310 998828 - E-mail: mattas@auth.gr

Table of Contents

I.1 Summary Description of Project Objectives	3
I.2. List of Participants and Contractors Contact Details.....	4
I.3. Work Performed	5
I.4. End Results.....	8
I.5. Methodologies and Approaches Followed	11
I.6. Achievements of the Project to the State-of-the-Art	15
I.7. Main Elements of the Management Activity.....	16
I.8. Main Elements of the Plan for Using and Disseminating the Knowledge	17

I.1 Summary Description of Project Objectives

The Common Agricultural Policy has been drastically changed over the last fifteen years, as it went through a series of major reforms. The last reform in 2003, introduced an innovative scheme; the decoupling of farm subsidies and a gradual modulation of the decoupled subsidies received by farmers. Given the great complexity of rural economic relations between EU member states and regions, it is not feasible to identify and determine the exact impacts of the CAP reform on regional economies. The CARERA project follows a multidisciplinary approach to cast the effects of the CAP reform on the economic structure of rural areas and particularly on employment. The purpose of the project is threefold: to offer detailed information about datasets and economic transactions, to provide an objective assessment on key features of rural areas (employment and income levels) and to deliver tools for simulating the effects of changes on both the CAP and the rural development schemes. Specifically, the CARERA project aims at:

1. Providing a comprehensive picture of the state of the art related to rural development measures and the main issues faced when addressing empirically regional development programmes in both the existing and the new member states.
2. Providing a detailed database describing the economic transactions and interconnections between rural economic sectors as well as on the perceptions and intentions of rural stakeholders against the current and future reforms of the CAP.
3. Quantifying empirically the structural changes that will take place in the farming sector of selected rural areas around the EU initiated by the recent CAP reform.
4. Analyzing the extent to which the new policy regime will indeed improve farmer's economic performance and thus their competitiveness, as competitiveness is highly related to employment level.
5. Analyzing and studying the existing rural development measures according to their potential of fostering employment generation in the countryside and providing a quantitative assessment of the CAP reform on the economic conditions of the rural areas, namely income and employment as well as on young people and women.
6. Providing an evaluation of the policy changes from the rural stakeholders point of view (i.e., farmers, entrepreneurs, farmers co-operatives, local authorities, local environmental organizations), and their effect upon rural employment generation.
7. Providing recommendations to policy makers on employment generating policy changes, based on the results of all assorted methods.

I.2. List of Participants and Contractors Contact Details

- Participant No. 1:** Aristotle University of Thessaloniki, School of Agriculture, GR.
Prof. Konstadinos Mattas
- Participant No. 2:** University of Crete UOC, Greece.
Ast. Prof. Vangelis Tzouvelekas
- Participant No. 3:** University of Parma UOP, Italy.
Prof. Fillipo Arfini
- Participant No. 4:** University of Wales at Aberystwyth UWA, UK.
Prof. Peter Midmore
- Participant No. 5:** Wageningen University WU, Netherlands.
Prof. Alfons Oude Lansink
- Participant No. 6:** Justus-Liebig University of Giessen JLU, Germany.
Prof. Michael Schmitz
- Participant No. 7:** Corvinus University of Budapest CUB, Hungary.
Prof. Csaba Forgacs
- Participant No. 8:** Swedish University of Agricultural Sciences SLU, Sweden.
Prof. Yves Surry

Co-ordinator contact details:

Prof. Konstadinos Mattas
Professor of Agricultural Economics
Aristotle University of Thessaloniki, School of Agriculture
University Campus,
P.O. Box: 225
54124 Thessaloniki, Greece
Phone: +30 2310 998807
Fax: +30 2310 998828
e-mail: mattas@auth.gr

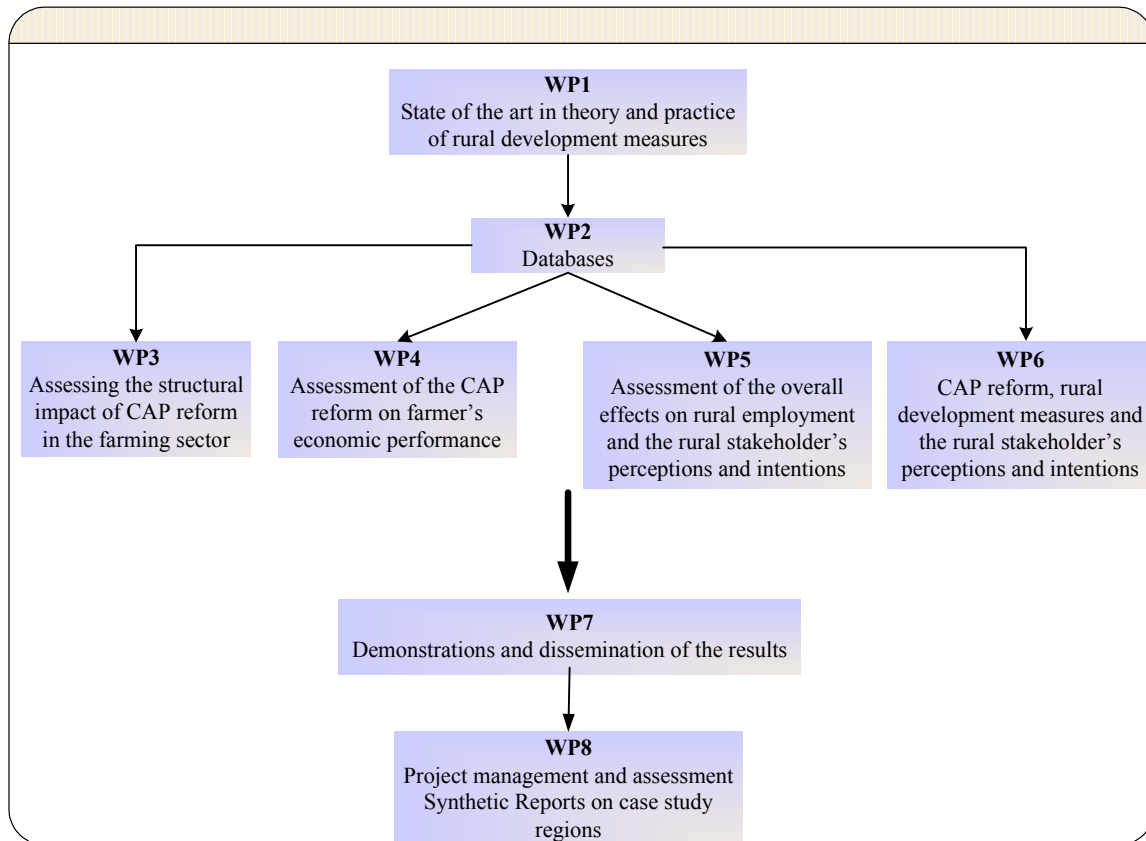
Project web-site: <http://www.eng.auth.gr/mattas/carera.htm>

The CARERA project *logo* is the following:



I.3. Work Performed

The objectives of the proposed project were fulfilled through the execution of the following Project Work Packages (WP, see graph):



Concerning **WP1**, a survey was conducted on the rural development approaches across the EU that resulted in a formal scientific literature review. This review produced Deliverable 1 “*Overview of the Current Implementation of Pillar 2 of the CAP Reform on EU Overall and on a Country (participated) Basis*” and Deliverable 2 “*A Literature Review on the Analysis of the Effects of CAP Reform on Rural Areas Emphasizing Young People and Women*”. In addition, a comparative analysis across study regions were undertaken to yield conclusions and recommendations for supporting future policymaking. This analysis resulted in Deliverable 14 “*A Report on the Employment Effectiveness of the Current Rural Development Measures and Suggestions for Future Amendments*”.

Regarding **WP2**, a critical evaluation and elaboration of the FADN database and also a survey on rural economic transactions produced Deliverable 3 «*A Critical Evaluation of the FADN Database*» and Deliverable 4 «*A Dataset on Rural Economic Transactions*» respectively. Subsequently, a survey was conducted, addressing perceptions and intentions of stakeholders in selected EU regions. The dataset obtained was an integral part of WP6 and formed Deliverable 5 «*A Dataset on Stakeholder's Perceptions and Intentions*».

As for **WP3**, the organization of the FADN database and the calibration of PMP models resulted in Deliverable 6 «*Modeling of an Experimental Approach for the Assessment of the Structural Changes in Farming Sector*» and Deliverable 9 «*A Report on the Effects of CAP Reform on the Farming Activities and Employment Levels*». Deliverable 6 provides a detailed description of the theoretical aspects of building the models and Deliverable 9 offers a detailed description on the effects of CAP reform upon the farming sector for all selected regions.

Within the framework of **WP4**, the development of a conceptual microeconomic model for farm performance resulted in the construction of Deliverable 8 «*Development of a Microeconomic Model for the Analysis of Farmer's Economic Performance*». Afterwards, the data obtained from FADN and information from WP3 were inserted in cost and production frontier models to cast the impact of the CAP reform on the farmer's economic performance, thus, producing Deliverable 12 «*An Assessment of the Impact of CAP Reform on the Competitiveness of the Farming Sector*».

As far as **WP5** is concerned, hybrid regional input-output models for all selected regions produced. Deliverable 7 «*A General Equilibrium Model for the Evaluation of the Changes in the Economic Conditions in Rural Areas*» provides all the theoretical background to build regional input output tables. The resulted input-output model was used to evaluate comparatively the economic conditions in the selected rural regions. In addition, a quantitative evaluation was attempted the existing rural development measures on the economic conditions of these regions. Accordingly, Deliverable 10 «*An Analysis of the Overall Economic and Employment Effects of CAP Reform in the Rural Areas*» and Deliverable 11 «*Comparative Analysis of the Economic Structure in Rural Areas*» were produced reflecting the employment impacts and various multiplier effects.

Regarding **WP6**, a relevant survey was undertaken to address rural stakeholders' perceptions and intentions along with an empirical econometric model, aiming at assessing

stakeholders' perceptions on CAP reforms the data obtained from this survey. Data were analyzed by using statistical and econometric models for choice experiments, which resulted in Deliverable D13 "*An Evaluation of the Employment Effects of CAP Reform and Rural Development Measures and Suggestions from Rural Stakeholders Emphasizing Young People and Women*" and Deliverable D15 "*A Report on Rural Stakeholders Perceptions and Intentions Concerning CAP Reform*".

In the context of **WP7**, a leaflet was prepared that contains main conclusions of the empirical research undertaken in the project. This resulted in Deliverable D16 "*A Leaflet Summarizing the Results of the Empirical Research*", which is published in all partners' language and distributed accordingly. In addition, a policy workshop was held in Wageningen (15th November, 2008), where stakeholders and policy makers from each participant country were participated. In this workshop, following an interactive methodology developed by Partner 4, Pillar II impacts and improvements were discussed. In addition, a short course on the methods used and implemented in the project was carried out (Wageningen, 12th - 16th November, 2008), in which members of the project's Consortium offered lectures to scientific audience and PhD students from all over Europe. Both the workshop and the short course have described in the ANNEX; Deliverable 17 "*A Workshop on the Analysis of Employment Effects of CAP Reform*" and Deliverable 25 "*A Short Course on Modelling Tools*". Research results obtained from all Work Packages were elaborated and combined adequately to form a condensed report that reflects the effects of CAP reform on each one of the selected regions, Deliverables D18-D23 "*Synthetic Reports on the Effects of CAP Reform in the Selected Rural Areas*". Finally, the modeling tools employed in the project were compiled in a CD-ROM, which resulted in Deliverable D24 "*A CD-ROM (in English and all Partners' Language), containing all the modeling tools*". This will serve as a benchmark for all people interested to understand the modeling tools and to apply them in future research.

Conclusively, concerning **WP8**, Deliverable 26 "*A Handbook\Guidelines for the Executive Committee*", Deliverable 27 "*A First Progress Report of the Research Activities*", Deliverable 28 (biannually) "*Work Package specific evaluation of the progress reports*" and Deliverable 29 "*A Final Report on the Research Activities*" have been completed. The CARERA website was created, which is the central location for posting progress reports, results, requests, guidelines to the partners, and descriptions of the tasks for each participant along with the time

schedules and the work plan of the whole project. All final deliverables are uploaded and can be accessed through the project's website, as well as the meeting presentations and in particular the presentation of the last meeting in Brussels, where the results were discussed and elaborated having feedback from EU officials and experts. The project meetings were held regularly so that the project coordinator to be able to monitor and evaluate the progress of the project. The seven meetings took place in Rethymno, Greece (March 17th-18th 2006), Parma, Italy (June 8th-9th 2006), in Aberystwyth, Wales, UK (October 27th-28th 2006), in Budapest, Hungary (March 2nd 2007), in Uppsala, Sweden (June 8th 2007), in Wageningen, The Netherlands (November 16th 2007), in Giessen, Germany (February 29th 2008). A final meeting was organized in Brussels on the 7th of April 2008, in which the members of the Consortium presented the outcomes of the project to EU officials and experts to enrich them on the base of their comments.

I.4. End Results

The aforementioned deliverables have been completed without any major deviations from the workprogramme. The main results are depicted in each one of the deliverables. Final deliverables of the scientific WP's have enriched by a particular session, where conclusions and policy recommendations are presented. In addition, those deliverables are accompanied by executive summaries. Some of the main results and conclusions, extracted from the deliverables, are the following:

CAP reform and Pillar II measures on rural employment (WPI)

- Pillar II reduces the labour outflows, stabilizes farm employment, and creates new jobs.
- Pillar II policy appears effective in identifying and supporting new opportunities in farm diversification and in aiding small businesses to use their rural location to comparative advantage by exploiting new technologies.
- Young people and women seem to be more affected by the negative employment effects generated by the CAP reform.
- Uncertainty about the duration of Pillar II measures along with bureaucracy shrink long-term employment effects.
- New urban markets assist some farm businesses, but this accentuates disparities with less accessible rural areas.

- A modulation of funds (from Pillar I to Pillar II) is required to support the non-farm rural sector.
- Replacing agro-focused rural policies with non-sectoral rural policies is a good employment induced strategy.
- Adapting rural development policies to local particularities is an effective strategy.
- A transfer of resources from Pillar I to Pillar II is required to support the larger non-farm sector.

Impact of the CAP Reform on Farmers' Economic Performance (WP4)

- Total (i.e., decoupled) subsidies have negative impacts on the farmers' economic performance. This implies that a reduction in decoupled subsidies may increase farmers' competitiveness.
- Coupled subsidies tend to have different impacts on the farmers' economic performance in different sectors and countries. Therefore, a decrease in coupled subsidies may enhance livestock farmers' competitiveness.
- Elimination of subsidies in the farming sector can induce more labour participation in the farming sector.

Effects of CAP reform on the farming activities and employment levels (WP3)

- Pillar I polarizes farm structures with slight negative employment consequences within the sector.
- SPS (Single Payment Scheme) or SPS associated with price variations leads to a small land reallocation (between 4% and 15%).
- Land use is allocated according to price signals and consequently, farmers invest in those activities for which the market assigns the higher profitability (cotton, oilseed, fodder crops).
- SPS leads to a clear reduction of workers, especially of extra-family workers, as a consequence of a more extensive mix crop.
- Specific subsidies lead to non efficient land use.
- The SPS, according to the market needs, leads to a closer relationship along the food-chain with positive return in terms of rural development.
- Price market fluctuations in the short run can generate instability in Gross Margin.
- Modulation and regionalization can affect the profitability of specialized farms and large commercial farms.

Rural Stakeholders Perceptions and Intentions Concerning CAP Reform (WP5 and WP6)

- Young farmers are less likely to abandon farming activities, and are more likely to increase production and change crop mix than their older counterparts. This emphasizes the importance of aid to the young.
- Adequate informing about CAP reform contributes to the reorganization of farms. The level of information is important since it reduces uncertainty for farmers and could contribute to make farmers more market oriented.
- CAP reform affects the consumption patterns in rural areas and labour allocation between on and off farm activities.
- Pillar II funds support substantially regional employment due to a “short run” demand stimulation.

In addition, results specify each study region, considering all the specialties, appear in detail in the six synthetic reports. The results reflect the complete fulfillment of the aforementioned project’s objectives as they provide information, data, indicators and quantitative instruments on the analysis of the anticipated impacts of the CAP reform and rural development measures on the economic structure and employment of rural areas.

The project fulfilled its objective in a very distinct way as results have drawn via various methodological approaches. Admitting that not any methodological approach can offer a complete and reliable analysis, several approaches were employed. Thus, first, the economic transactions of the regional economy have depicted by building regional input-output models, where the whole economy can be observed and changes can be traced out. Second, no matter what the employed methodologies offer as final outcome, stakeholders are the ultimate target. Therefore, stakeholders opinions, perceptions, perspectives and stances must also be deeply considered. This has also achieved by implementing extensive interviews, consultations and interactions with stakeholders. Finally, stakeholders’ perceptions have recorded, analyzed and depicted in the corresponded reports and deliverables.

Finally, all developed models have been applied in case studies to assess the effects of CAP reform and derive conclusions and recommendations. Developing and applying the various models (Positive mathematical Programming, Stochastic Frontier Model and Agricultural Household Model) have been an exciting and dynamic exercise followed by all members of the consortium and reached novelty levels. Overcoming most of data acquisition and scientific

impediments, all the models, which were intended to be used, constructed providing analytical and practical results. Thus, the derived empirical evidence can provide support of policy decision making in future negotiations of CAP reforms as well as in formulating the forthcoming rural development measures of Pillar II of the CAP.

I.5. Methodologies and Approaches Followed

The complexities of rural economic relations throughout the EU require a multidisciplinary approach to cast the impacts of the CAP reform on the economic structure of rural areas and on the farm and off-farm employment. Several methodologies have employed and combined to derive the results attempting to view the effects of CAP from different sides. The following methodologies were applied:

- *Positive Mathematical Programming (PMP)* models applied to selected regions taking into account the social and economic differences among areas;
- *A stochastic frontier model (SFA)* employed for the quantitative evaluation of the CAP reform impacts on the efficiency of farm units, considering also differences between selected areas;
- *A hybrid regional Input/Output model* developed to assess the overall effects on rural employment and income;
- *An Econometric model for choice experiments* applied to farmers' future intentions, while taking into account socio-economic characteristics.

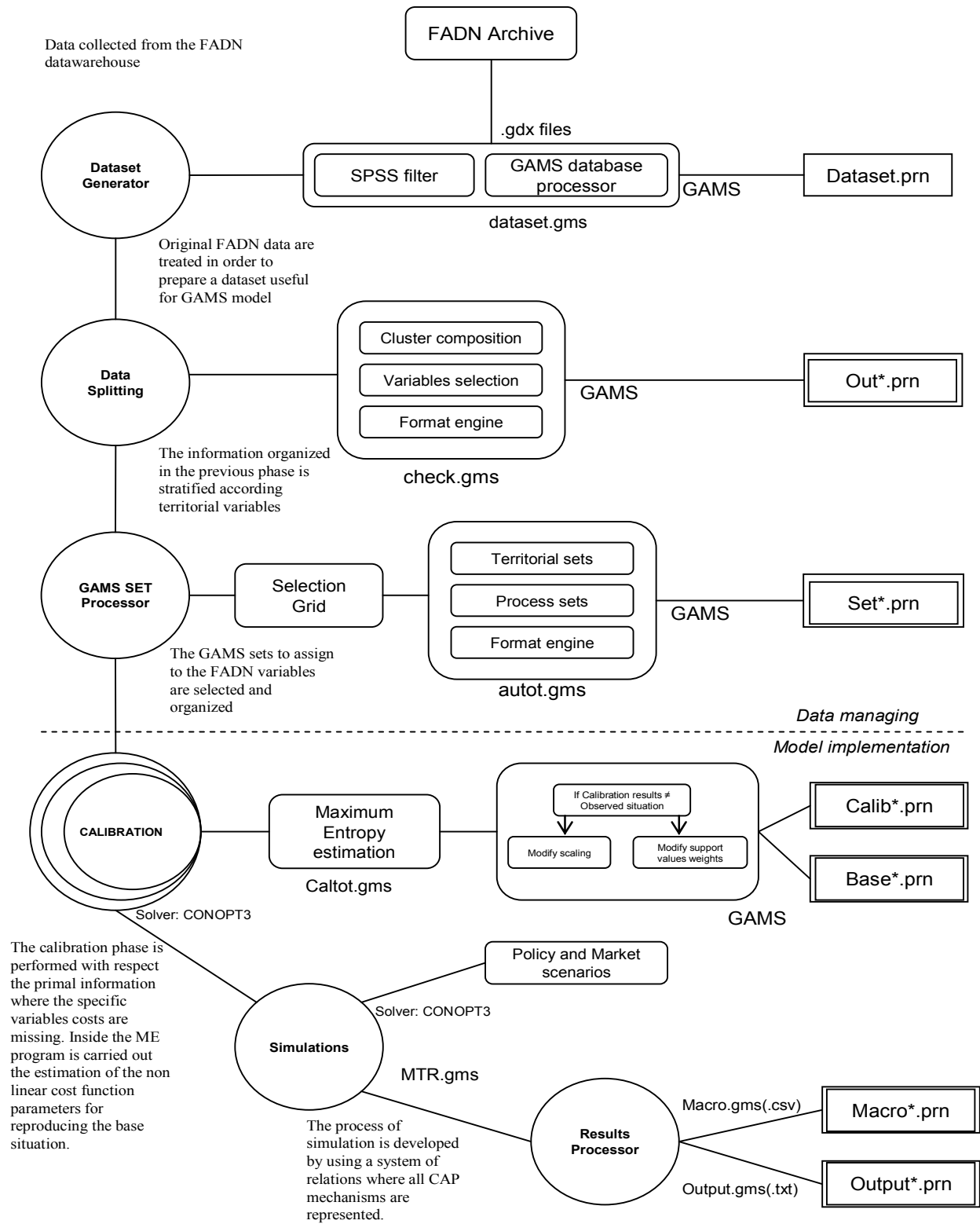
Methodologies applied have demonstrated scientific robustness and novelty passing the test by exposing them to scientific review. This was accomplished by presenting them in scientific conferences and by preparing scientific papers to be published in peer review journals. In addition, an attempt was made the various models to form a solid analytical framework. A brief description of the abovementioned methodologies is provided in the following sections:

The Positive Mathematical Programming (PMP) was applied in its most recent development. The analysis was based on a microeconomic approach to identify policy-induced changes at farm level, and the main input was farm-level FADN data that include crop land use, yields, total variable costs, output prices and subsidies. These data were adequate to develop a frontier model for each region (Emilia-Romagna in Italy, Anatoliki-Makedonia & Thraki in Greece,

Kassel in Germany, East-Wales in United Kingdom, Östergötland in Sweden), commencing from micro-data to reflect the behaviour of the farm holdings within each of the selected regions. The regional models allowed the assessment of the main relevant effects of each of the different policy scenarios that were implemented both on the supply side (land allocation and total output per crop) and on the economic variables (gross saleable production, total subsidies, total variable costs, gross margins and marginal land values). The simulation scenarios that have been carried out were first, the full decoupling of the direct subsidies and second, the full decoupling of direct subsidies assuming additionally price variation. A special module implemented inside the PMP model captured labour allocation inside the farm with respect to the new production plan induced by the CAP reform. The model was able to simulate possible agricultural policy scenarios at regional level, guaranteeing methodological correctness in describing the behaviour of farmers. An overview of the PMP model architecture employed in the CARERA project is provided in figure 1.

The stochastic frontier model (SFA) was employed to analyze the farmer's economic performance in terms of technical efficiency and productivity and to study the changes on the aforementioned elements due to CAP reform. Efficiency estimates of individual producers were linked to a set of exogenous variables, which involved producer characteristics and policy measures of the recent CAP reform. In this way, it was feasible to identify sources of inefficiency and determine their effects on farmer's efficiency. In addition, productivity was measured by the Divisia index and it was further decomposed (in the SFA model) into four elements: the technical efficiency change, the technical change, the scale change, and the allocative efficiency change. The main input was EU-FADN data (period 1995-2004) related to crop and dairy farms in Germany, the Netherlands and Sweden. These data were used to estimate the production frontiers of different types of farms, to derive their technical efficiency, and to determine the impact of different factors on productivity and on technical efficiency. Further, the heteroskedasticity of the inefficiency effects model was also considered, to estimate the production frontier function integrated with non-monotonic inefficiency effects model for Greek olive farms. Accordingly, the marginal effects of the exogenous variables on the mean and the variance of inefficiency were calculated, in order to determine the non-monotonicity of the inefficiency effects.

Figure 1: PMP model architecture



The Input-Output impact analysis was selected to assess impacts on output, household income, and employment considering the whole regional economy. The main advantage of the I/O model is its ability to portray the whole regional economy by a number of sectors, providing an efficient tool for sectoral impact analysis. The model was applied in six EU regions (Anatoliki Makedonia & Thraki-Greece, Emilia Romagna-Italy, East Wales-UK, Southern Great Plain-Hungary, Kassel-Germany, and Östergötland-Sweden) following two main steps. The first step was the construction of the regional input-output tables using an accurate and widely applied partial survey technique (Generation of Regional Input-Output Tables - GRIT). The second step was the upgrade of the constructed hybrid regional input-output models using survey data on key rural economic transactions. The application of the model allowed for the estimation of various I-O linkage coefficients (Multipliers) for each region to identify the most important economic sectors, in terms of their potential to enhance regional employment, income and output levels, and to estimate indirect and total economic impacts. These linkage coefficients involved the Chenery and Watanabe direct linkages, the Rasmussen and Hirschman linkages (output, income and employment multipliers), the Mattas and Shrestha I-O elasticities (output, income and employment elasticities), and the Papadas and Dahl supply multipliers (supply-driven multipliers). The estimated coefficients exposed the sectors with the highest linkage relations in each region, that is, the sectors with the highest potentials to enhance regional output, income, and employment. Furthermore, results from PMP model fed into input-output model to observe the indirect and induced changes for the whole economy.

In addition, an econometric model for choice experiments was developed and applied to assess the impacts of the CAP reform and RDP measures on employment. The first step was to conduct a large scale survey, using two types of questionnaires in three specific EU regions: Anatoliki Makedonia and Thraki in Greece, Flevoland in Holland and the Southern Great Plain in Hungary. These questionnaires were directed towards non-farmer stakeholders (entrepreneurs in the agribusiness sector, farmers' cooperatives, non-governmental organizations) and towards farmers involved in specific farming activities. Data from the former questionnaires were analysed through simple statistical tools, whereas the data obtained from the latter were gauged through the application of an econometric model explaining stakeholders' possible choices. In particular, a trivariate sequential model of three decisions (intentions with respect to their

decision to abandon or not farming activity, expanding or not their operations and changing or not their crop mix) was estimated and the important factors determining these three choices were identified. Consequently, it was possible to uncover intra and inter regional differences among stakeholders and to infer what the future intentions of producers are and how producer characteristics affect the abovementioned choices.

Finally, an agricultural household model was developed to cast the impacts of the CAP reform on employment. Particularly, simulations results were used based on relevant elasticity estimates and alternative scenarios concerning price changes. The elasticity estimates were obtained through econometrically estimating an empirical model, using panel data from the Farm Business Survey for UK. Further, three crops (wheat, barley, oilseeds) were considered and three variable inputs (seeds, fertilizers, land), whereas for the consumption side, the indirect utility function contained three goods (on-farm and off-farm leisure together with an aggregated market good). Consequently, policy measures were indicated toward maintaining employment in the selected rural areas.

I.6. Achievements of the Project to the State-of-the-Art

The scientific work produced under the project contributes significantly to the state-of-the-art. The main aspects that can be cited on this contribution are the following:

- A huge and complete literature review was built that relates to particular methodologies and techniques employed during the project's implementation.
- Most of the methodological approaches followed in this project have further developed and enhanced. Details on the novelty of the methodologies can be found on the corresponding deliverables that describe the theoretical aspects. A few of them that can briefly be indicated are: (i) The PMP model have advanced, expanded by combining it with a regional model, and its sectoral results extrapolated to regional level. (ii) The stochastic model has incorporated policy parameters and results compared among different countries. (iii) The econometric model for choice experiments has developed in a trivariate sequential model of tree decisions.
- At this point, may be worthy of mention, that a novelty of the approach might be the attempt to have all the models constructed in a connected and interrelated framework.

- Details of the produced model work have been taught to several PhD students during a week short course. Thus, PhD students can further apply the gained knowledge and skills from the project's techniques.

I.7. Main Elements of the Management Activity

Management activities of the CARERA project aimed to build a strong relationship between partners and to exploit their scientific competence to organize and carry out the work of each Work Package. Accordingly, main elements of the management activity are as follows:

- ***Consortium Agreement:*** It includes, in detail, the organization and the rules for the operation of the Consortium and it was signed by all partners prior to the beginning of the project.
- ***The Steering Committee:*** The Steering Committee undertook the responsibility to guide partners for the accomplishment of the project's objectives and to control for timetables and quality of deliverables. The Committee was chaired by the project coordinator and involved partners P3 (University of Parma) and P4 (University of Aberystwyth at Wales) as well.
- ***The Executive Committee:*** The role of the Executive Committee was to carry out the guidelines provided by the Steering Committee and was chaired by the project coordinator.
- ***Financial Reports:*** The project's coordinator prepared a version of the Partner's Duties for the CARERA Partners along with the necessary documents for Reporting provided by the Commission. This version was adjusted to the CARERA project, was distributed to the partners and was on-line along with all the EU documents.
- ***Audit Certificates:*** The project coordinator requested from each partner to prepare the audit certificates, as they were a valuable asset to the whole project's reporting and later evaluation.
- ***Transfer of Funds:*** Funds were transferred regularly from the coordinator to the partners. The coordinator transferred all the amount of the budget designated to each partner without further delay upon receiving the funds from the EU.
- ***The CARERA web site:*** The web site (www.eng.auth.gr/mattas/carera.htm) was constructed, maintained and updated mainly by the coordinator. The website served as an apparatus of the administrative and scientific work, besides being a way of exchange of knowledge between partners and of dissemination of knowledge to non participants.

In addition, an intense activity of **meetings organization** and general management was developed during the project's duration. The exchange of experience and the sharing of expertise were particularly important, and therefore, eight meetings, a short course, and a policy workshop were organized as follows:

- 1st Meeting: Rethymno-Greece, March 17th - 18th, 2006.
- 2nd Meeting: Parma-Italy, June 8th - 9th, 2006.
- 3rd Meeting: Aberystwyth-Wales, October 27th - 28th, 2006.
- 4th Meeting: Budapest-Hungary, March 2nd, 2007.
- 5th Meeting: Uppsala-Sweden, June 8th-9th, 2007.
- Short Course: Wageningen-The Netherlands, November 12th-15th, 2007.
- Policy Workshop: Wageningen-The Netherlands, November 15th, 2007.
- 6th Meeting: Wageningen-The Netherlands, November 16th, 2007.
- 7th Meeting: Giessen-Germany, February 29th, 2008.
- Final Meeting: Brussels-Belgium April 7th, 2008.

I.8. Main Elements of the Plan for Using and Disseminating the Knowledge

Particular attention was paid to the important aspect of the dissemination of information and knowledge. The devised dissemination plan, as described in the ANNEX, was strictly followed and several dissemination activities have been undertaken. The initiation was the creation and continuous updating of the project's website (www.eng.auth.gr/mattas/carera.htm) that mirrors all the activities undertaken by partners from project's commencement up to the end. Subsequently, the main actions that have been taken place are as follows:

- *Policy workshop*: A day workshop was organized, Wageningen The Netherlands, where stakeholders and policy makers from all participated countries and from Commission were invited. Participants interactively reacted on scientific results and formulated their own statements expressing their perceptions and beliefs on CAP reform effects and future perspectives.
- *CD-ROM*: The creation of a CD-ROM was an accompanied activity to the workshop. It contains the modelling tools applied in the project to be available to the Commission allowing implementation in other regions and future reference.

CaReRa

- Short Course: A one-week short course was held in Wageningen and involved lectures by members of the consortium on the modelling tools employed to cast the impacts of the CAP reform on rural employment. PhD students along with regional and policy experts from all over Europe have registered and participated to learn advance techniques of policy analysis.
- Final Meeting: A meeting in Brussels, April 2008, has organized, by the completion of the project, where the partners presented the main outcome to EU Commission experts. The meeting was very constructive to incorporate comments and to bring in the surface results that were very useful for EU policy making, in particular in this stage, “health check” phase.
- Synthetic Reports: Partners prepared a synthetic report on the overall effects of CAP reform on each particular rural economy, which depicts in a very comprehensible way the region’s course and impact. The synthetic reports have disseminated to local authorities and researchers.
- Leaflet: Partners prepared a leaflet (in each corresponded language) that summarizes the purpose and the main findings of the project with particular emphasis on policy suggestions for the future development of the rural areas throughout EU. The leaflet is being distributed to main organizations involving farmers, to city halls and local prefectures of rural areas.
- Organizational Meetings. The organized project’s meetings served as a main communication tool among the partners, whereas several sub-meetings took place when in need.
- E-Meetings. Specific software was installed and shared among all partners to arrange online meetings. Several e-meetings have organized between partners, involved in particular WP’s to solve and discuss particular issues.
- Shared e-mail list (carera@lists.auth.gr). A common e-mail was issued and used throughout the project until now, so all registered collaborates and partners can be aware of any e-mail exchange and discussion taking place for the project’s issue.

In addition, endeavours were made by all partners to publish parts of the theoretical and empirical results in international seminars and conferences as well as prestigious specialized scientific journals. All partners have participated or intend to participate in international

seminars and conferences with scholarly audience. Indicative working papers presented and forthcoming in various seminars and conferences are:

- F. Arfini, and M. Donati, “*Revenue and Cost Functions in PMP: a Methodological Integration for a Territorial Analysis of CAP*”, Contributed Paper at 107th EAAE Seminar “*Modeling Agricultural and Rural Development Policies*”, Sevilla, January 29th - February 1st, 2008.
- F. Arfini, and M. Donati, “*An integrated methodology to evaluate the effect of the “Health Check” on farm efficiency*”, 109th EAAE Seminar “*The CAP after the Fischler reform: national implementations, impact assessment and agenda for future reforms*”, Viterbo, 20-21 November 2008.
- F. Arfini, M. Donati, “*Health Check e efficienza delle aziende agricole: una valutazione comparativa su cinque regioni agricole europee*”. Proposta di Comunicazione sui Temi del Convegno SIDEA 2008.
- F. Arfini, M. Donati, “*A PMP Model for Measuring the Effects of the CAP Reform On Farm Employment Using Individual FADN Information*”, XIIth EAAE Conference, Ghent, Belgium, 25/08/2008.
- Cornelis Gardebroek and Alfons G.J.M. Oude Lansink, “*Dynamic Microeconomic Approaches To Analysing Agricultural Policy*”, Paper prepared for plenary presentation at the 107th EAAE Seminar “*Modelling of Agricultural and Rural Development Policies*”. Sevilla, Spain, January 29th -February 1st, 2008.
- Karagiannis G., Tzouvelekas V., and Mattas K., “*Further development of the FADN: insight in other development components – environmental (including organic farming) and social issues*”, FADN Meeting, Malta 24-26 September 2008.
- Langstaff, L., Lowman, S., Midmore, P. and Vaughan, A. (2007). “*Case-studies of Pillar Two of the CAP and rural development reform*”, presented at the Lithuanian Rural Development Conference, Kaunas, 8-10 November 2007.
- Langstaff, L., Lowman, S., Midmore, P. and Vaughan, A. (2008). “*Rural Development Policy Reform and rural employment: a case study of East Wales*”. School of Management and Business Working Paper, to be available from June 2008 at <http://www.aber.ac.uk/smba/en/Research/Research%20Papers.shtml>.

- Lindberg G., Lindqvist K.A., and Surry Y. “*Case Study on the Effects of CAP Reform on the Economy of the Region Östergötland-Sweden*”, XIIth EAAE Conference, Ghent, Belgium, 25/08/2008.
- Mattas K., Arfini F., Midmore P., Surry Y., Schmitz M., “*Impacts of CAP reform on rural employment: A multi-modeling cross country approach*”, 109th EAAE Seminar “The CAP after the Fischler reform: national implementations, impact assessment and agenda for future reforms”, Viterbo, 20-21 November 2008.
- Midmore, P., Langstaff, L., Lowman, S. and Vaughan, A. (2008). “*Qualitative evaluation of European rural development policy: evidence from comparative case studies*”, for presentation at the European Agricultural Economics Congress, Ghent, 26-29 August 2008.
- Sándor Elek, Imre Fertő, and Csaba Forgács, “*The Possible Effects of the CAP Reform on Farm Employment in Hungary*”, Poster paper, IAMO FORUM 2008, Halle, June, 2008.

It is worth underlining that knowledge dissemination is a perpetual activity for the time to come, though the project has completed. This will be accomplished by participating and presenting the results in several forthcoming scientific conferences or Commission activities (Ghent, August 2008 organized session on CARERA, FADN meeting, Malta September 2008, etc.). The members of the Consortium are planning also to proceed with the publication of two books entitled “*The Process of Rural Development: Analyzing the Effectiveness of Pillar Two of the Reformed CAP*”, and “*Tools for Evaluating the Effect of CAP on Rural Development*”. The books will comprise the results of the rural development case studies undertaken in the framework of WP1 (see graph p.5) and the modelling tools employed in the project to cast the effects of CAP reforms on rural development, respectively.