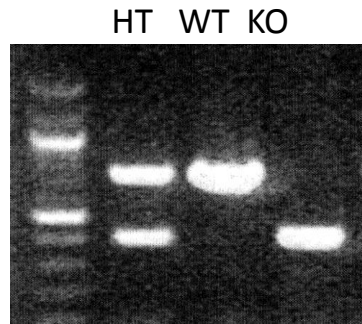


**A**
**B** Baseline characterization of *Nrf2*<sup>-/-</sup> mice

	WT	<i>Nrf2</i> <sup>-/-</sup>	<i>p</i>
<b>Hemodynamics</b>			
( <i>n</i> )	11	8	
BP (mmHg)			
systolic	119.89 ± 7.90	108.50 ± 6.57	<i>ns</i>
diastolic	102.79 ± 8.81	96.06 ± 9.68	<i>ns</i>
HR	623.51 ± 49.78	562.41 ± 72.30	<i>ns</i>
<b>Echocardiography</b>			
( <i>n</i> )	19	9	
IVSd (mm)	0.71 ± 0.11	0.75 ± 0.10	<i>ns</i>
LVIDd (mm)	4.24 ± 0.22	4.46 ± 0.34	<i>ns</i>
LVIDs (mm)	2.95 ± 0.28	3.03 ± 0.34	<i>ns</i>
LVPWd (mm)	0.77 ± 0.08	0.79 ± 0.14	<i>ns</i>
FS (%)	34.29 ± 5.60	32.02 ± 3.27	<i>ns</i>

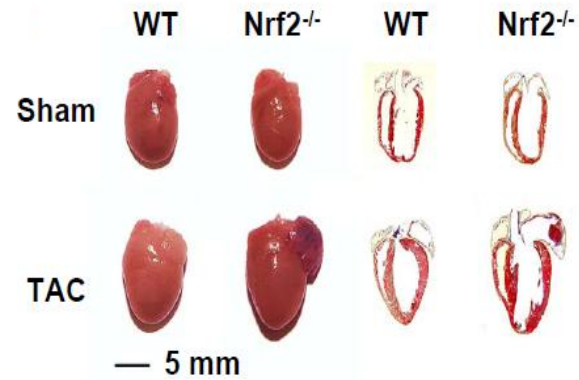
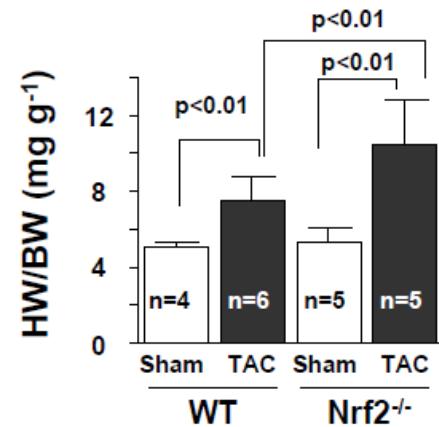
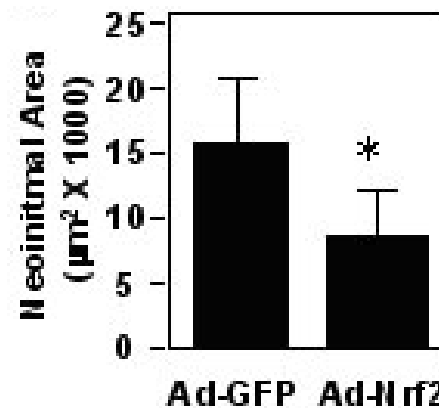
**C****D****E**

Figure 1

**A**

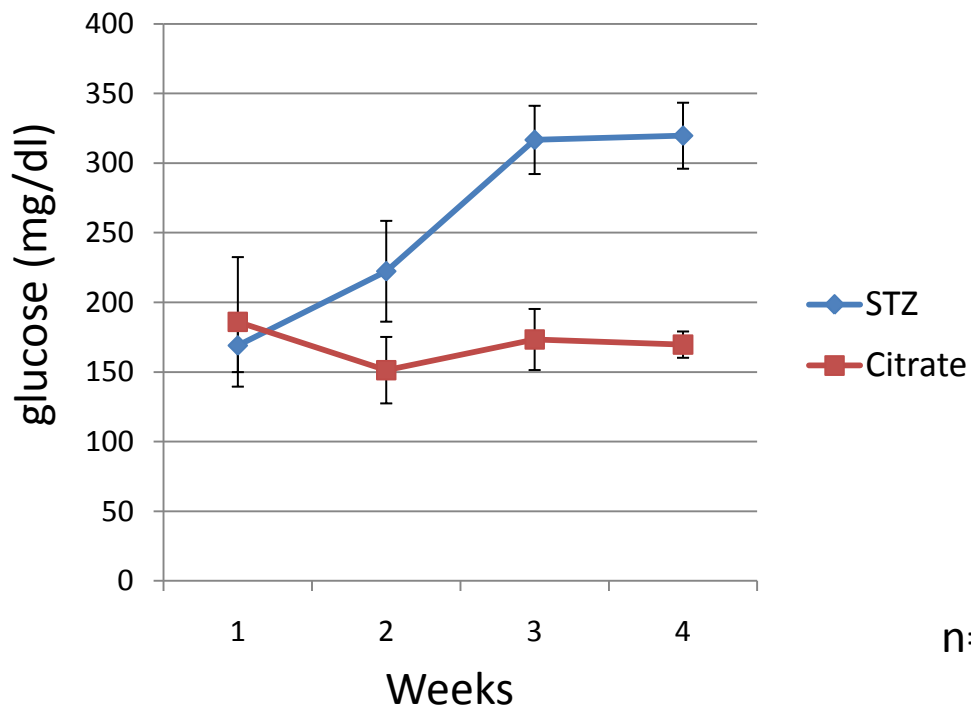
i.p. STZ /citrate  
40 mg/kg

Blood Glucose determination

GTT

**B**

Blood glucose levels



n=6

**C**

Glucose tolerance test

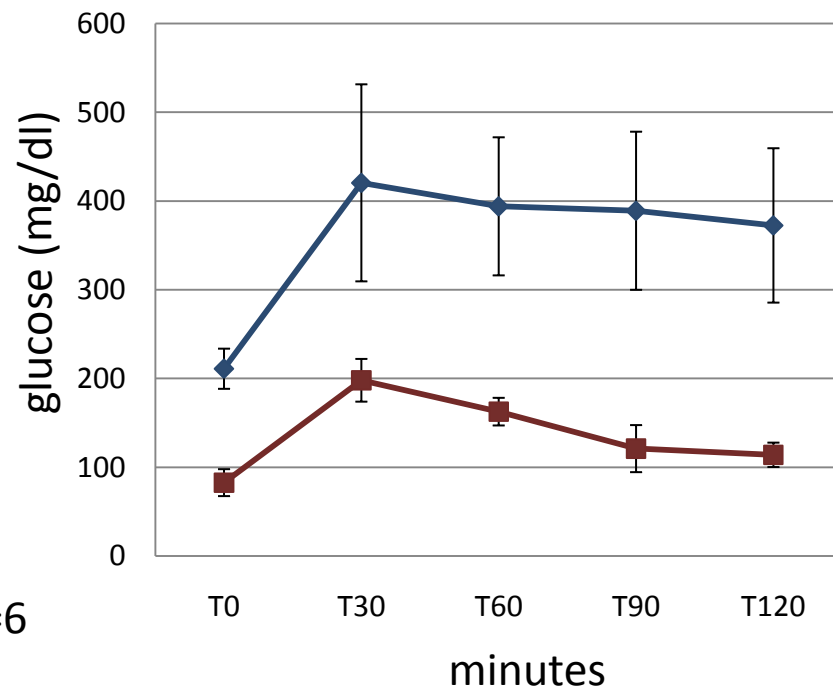


Figure 2

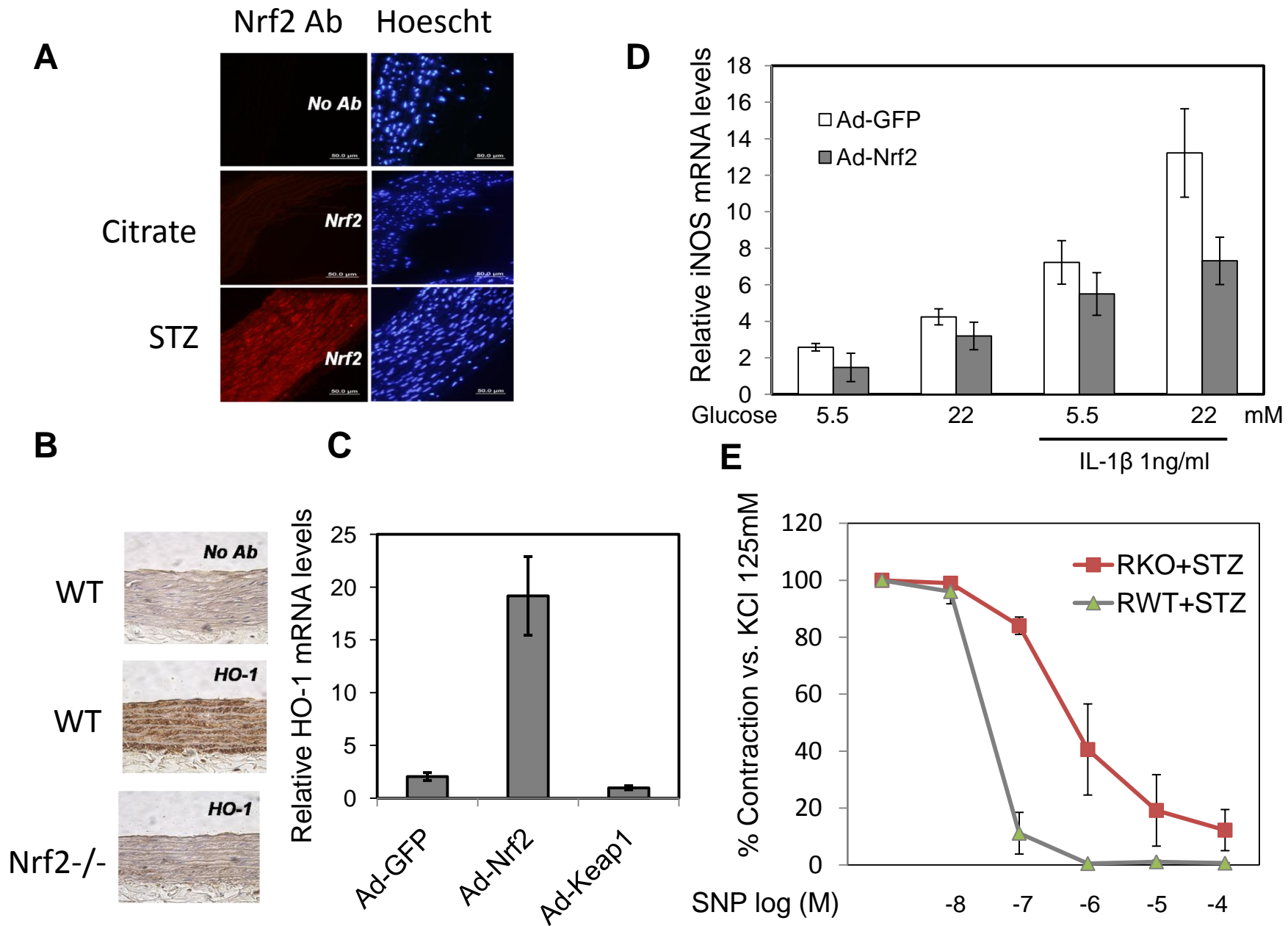


Figure 3