

Figure 1. Relative expression of splicing factor genes in adult C57BL/6J mice. The levels of *Prpf31*, *Prpf8* and *Prpf3* transcripts were measured relative to *Gapdh* expression (dCT) and the data from all the tissues was normalized to brain sample (ddCt).

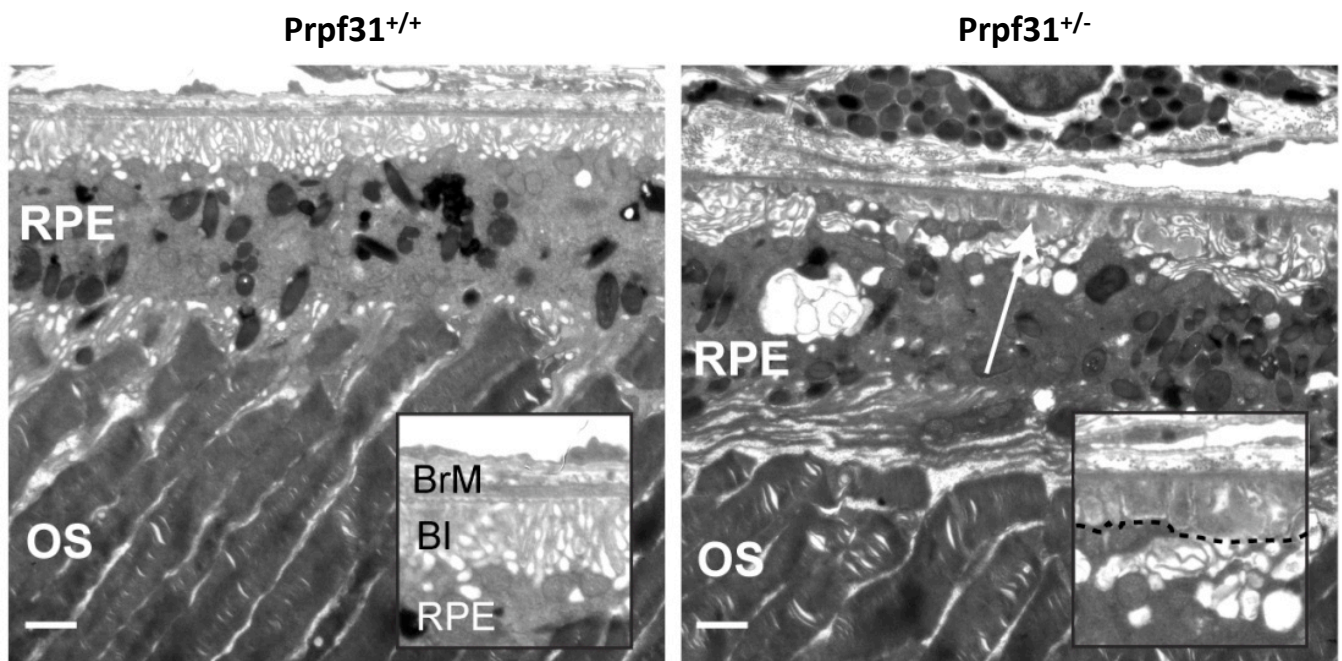


Figure 2. Ultrastructural changes observed in *Prpf31* mutant mice. The retinal pigment epithelium (RPE) in the mutant mice is disrupted, with loss of basal infoldings, vacuolization, and accumulation of deposits between the RPE and Bruch's membrane (arrows). Insets show the RPE-Bruch's membrane interface in more detail, with the deposits outlined. Photoreceptor outer segments are relatively normal in the mutant mice. BI, basal infoldings; BrM, Bruch's membrane; OS, outer segment; RPE, retinal pigment epithelium. Bars = 2 μ m.