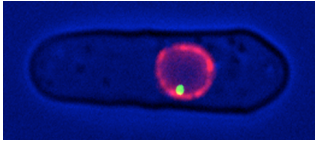
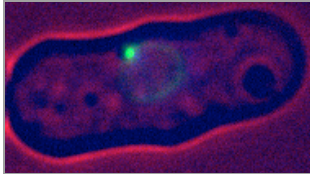


## 1. FINAL PUBLISHABLE SUMMARY REPORT

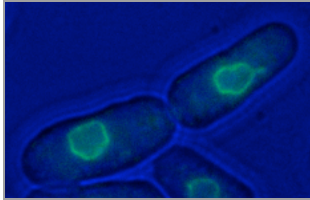
Figures attached to the Final Report.



**Figure 1.** Overlay of bright field image of a fission yeast cell (black) with the traceable synthetic heterochromatin locus (green dot) visible in the nucleus (red).



**Figure 2a.** Overlay of the forced perinuclear localization of the traceable synthetic heterochromatin locus (green dot) visible in the nucleus (green circle) in a fission yeast cell (black).



**Figure 2b.** Fission yeast cell nucleus marked (green circle) via the perinuclear localization of the GFP-LacI-CCVC tether in the absence of the LacO array flanking the synthetic heterochromatin locus. The locus is not detectable (no green dot – compare with Figure 2a).