

Figure 1 | Seasonal variations in the flux weighted daily carbon isotope signals of ecosystem respiration, branch photosynthesis (observed and modelled), stem respiration and soil respiration in a Maritime pine forest

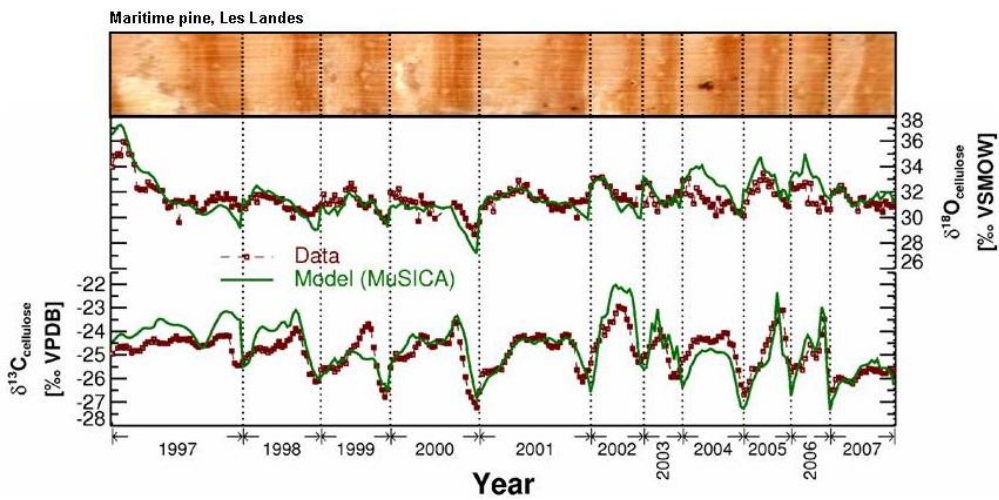


Figure 2 | Temporal variability in the observed and modelled $\delta^{13}\text{C}$ and $\delta^{18}\text{O}$ of tree ring cellulose between 1997 and 2007 at Le Bray flux site, France (Ogée et al., in prep).