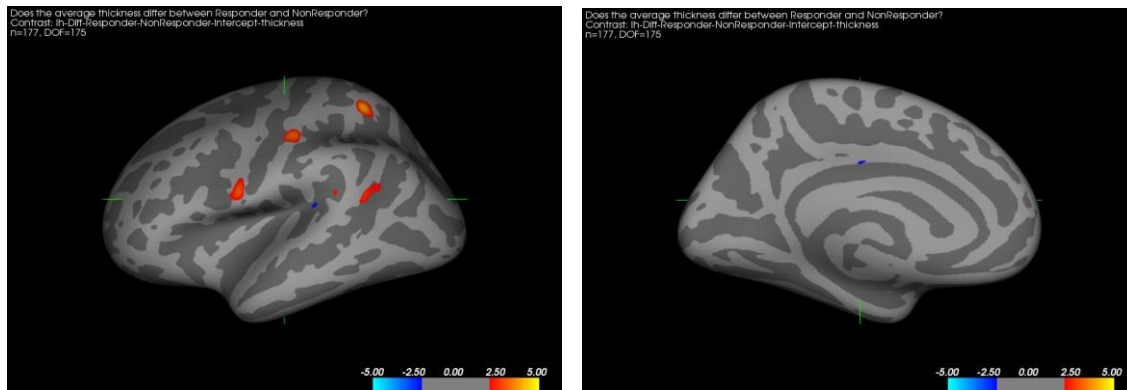
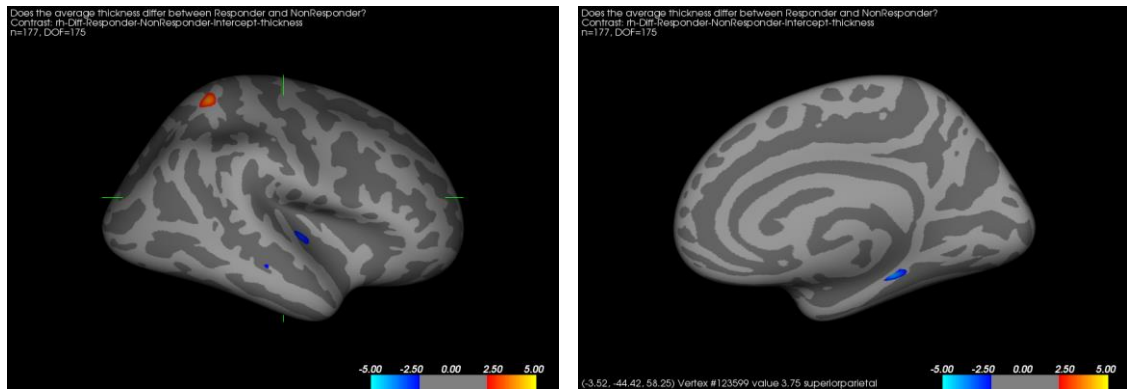


## Figures and tables relevant to the main S&T results/foregrounds

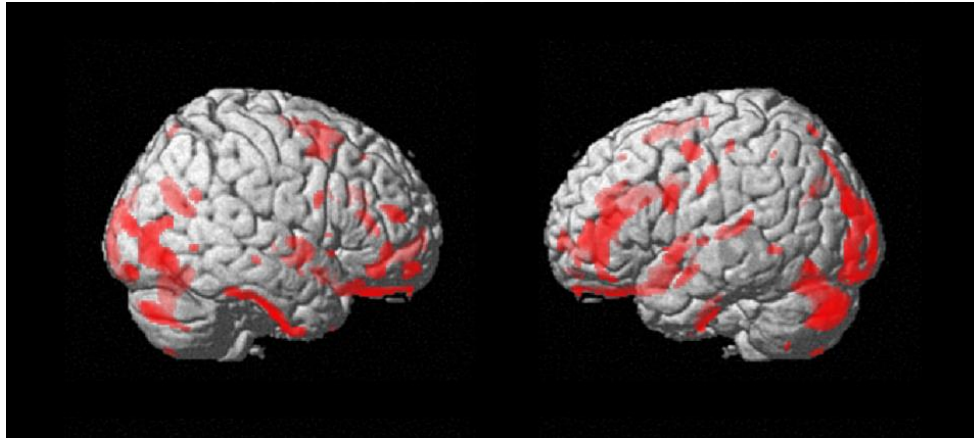
**Figure 1 & 2.** Group comparisons between Remitters and Non-Remitters in the left hemisphere. Red indicates increased values and blue decreased values of cortical thickness for Remitters in comparison to Non-Remitters.



**Figure 3 & 4.** Group comparisons between Remitters and Non-Remitters in the right hemisphere. Red indicates larger values and blue smaller values of cortical thickness in Remitters in comparison to Non-Remitters.



**Figure 5.** Group comparisons between Remitters and Non-Remitters. Red indicates smaller GM regions in Non-Remitters as compared to Remitters.



**Table 1:** Results from the Support Vector Machine treatment response prediction from white matter (top panel) and grey matter (bottom panel).

	All countries		Denmark		Israel		Spain		UK	
	Statistic	p-val	Statistic	p-val	Statistic	p-val	Statistic	p-val	Statistic	p-val
Accuracy	0.57	>0.05	0.57	>0.05	0.72	0.01	0.66	>0.05	0.52	-
Sensitivity	0.71	>0.05	0.48	>0.05	0.82	0.02	0.82	>0.05	0.85	>0.05
Specificity	0.37	>0.05	0.61	>0.05	0.58	0.01	0.35	>0.05	0.19	>0.05

	All countries		Denmark		Israel		Spain		UK	
	Statistic	p-val	Statistic	p-val	Statistic	p-val	Statistic	p-val	Statistic	p-val
Accuracy	0.55	>0.05	0.55	>0.05	0.571	>0.05	0.63	>0.05	0.65	>0.05
Sensitivity	0.67	>0.05	0.506	>0.05	0.735	>0.05	0.85	>0.05	0.92	>0.05
Specificity	0.37	>0.05	0.573	>0.05	0.327	>0.05	0.18	-	0.38	0.03

# Flowchart 1: clinical trial design

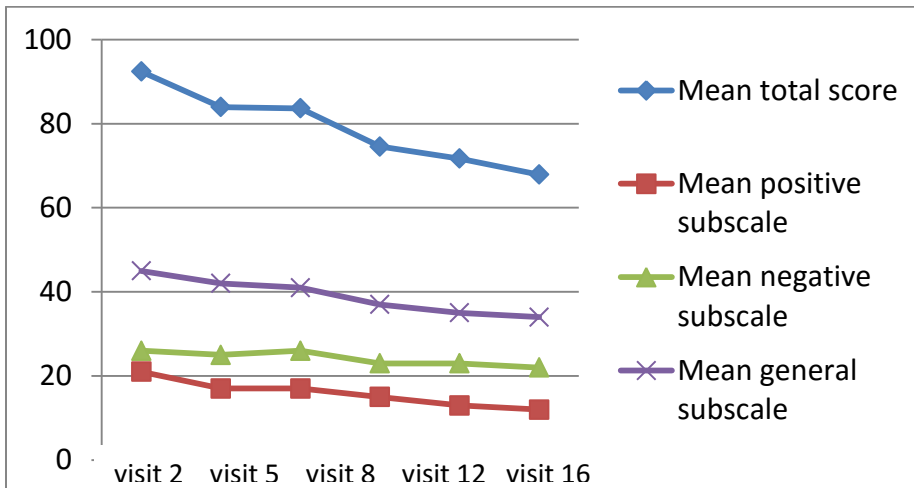
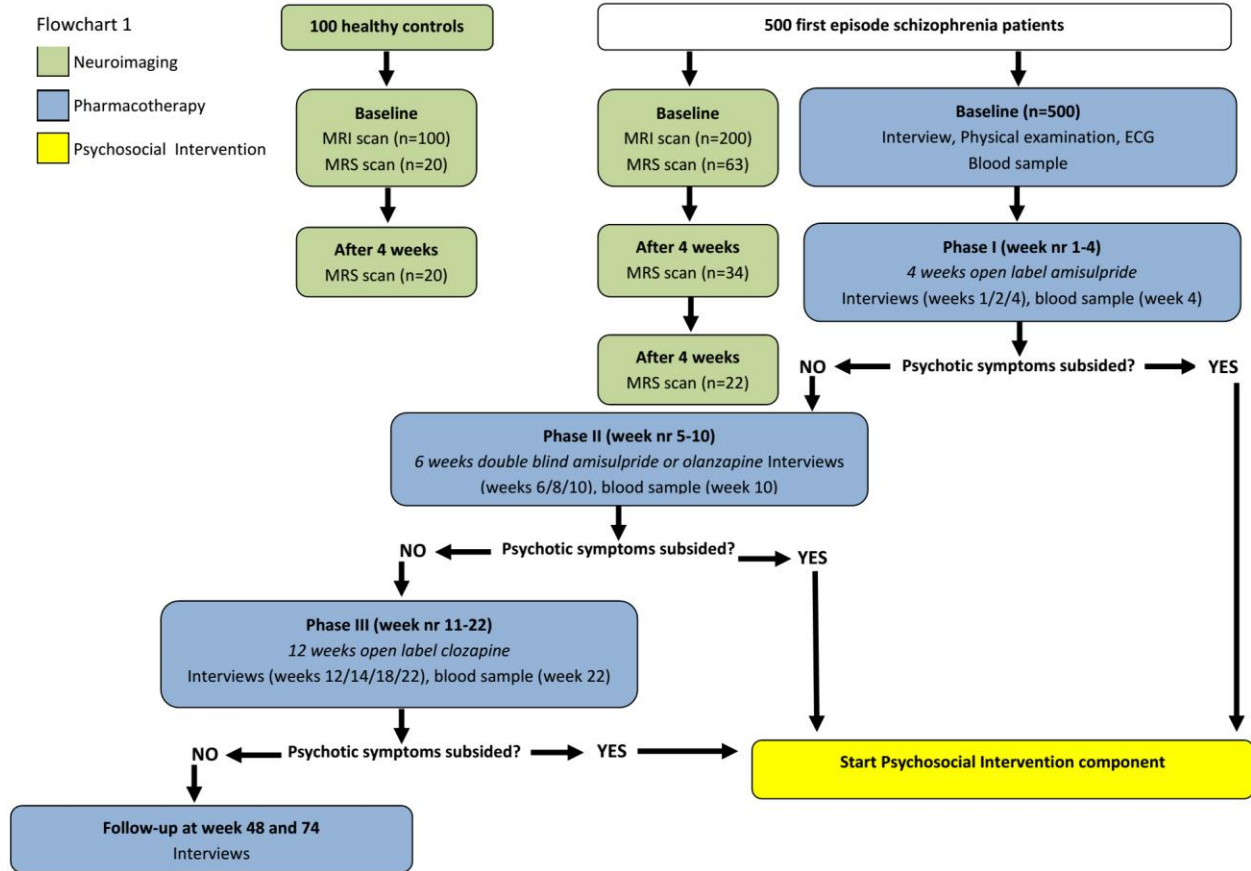
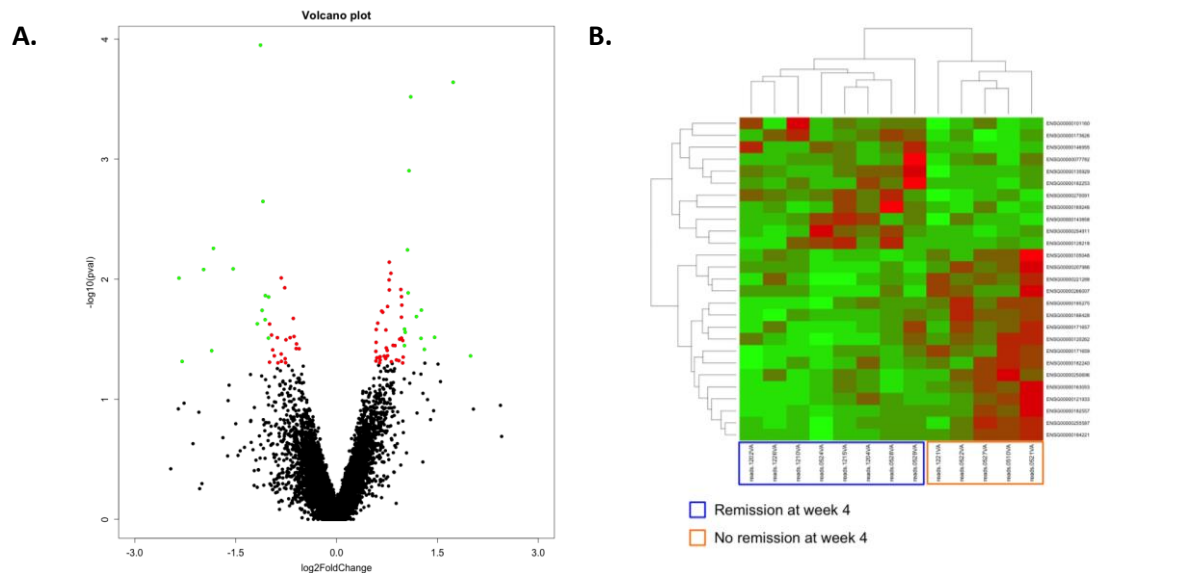


Figure 6: Positive and Negative Syndrome Scale (PANSS) scores of phase 3 patients, subdivided into total score and scores on the three subscales: positive, negative and general subscales.

**Table 2: blood samples collected per study visit**

	Visit 2 (week 0)	Visit 5 (week 4)	Visit 8 (week 10)	Visit 20 (week 22)
<b>Blood samples collected</b>	403	314	55	17
<b>DNA</b>	377	296	53	17
<b>RNA</b>	391	306	52	17
<b>Plasma</b>	387	307	53	17
<b>Serum</b>	403	314	55	17
<b>Proteomic plasma</b>	390	303	54	17



**Figure 7: Genes differentially expressed between remitted and non-remitted patients. A.** Volcano plot showing the difference in expression profile at inclusion between remitters and non-remitters to amisulpride. Up-regulated and down-regulated genes that are differentially expressed before and after treatment with amisulpride are shown in red and green, respectively. **B.** Heatmap of the cluster analysis of the 26 genes differentially expressed between remitters (blue) and non-remitters (orange) to amisulpride. Up-regulated and down-regulated genes are shown in red and green, respectively. Differentially expressed genes based cluster analysis showed a perfect discrimination between remitters and non-remitters.

Project logo:

