

Figure 1. DAEDALOS Workpackages.

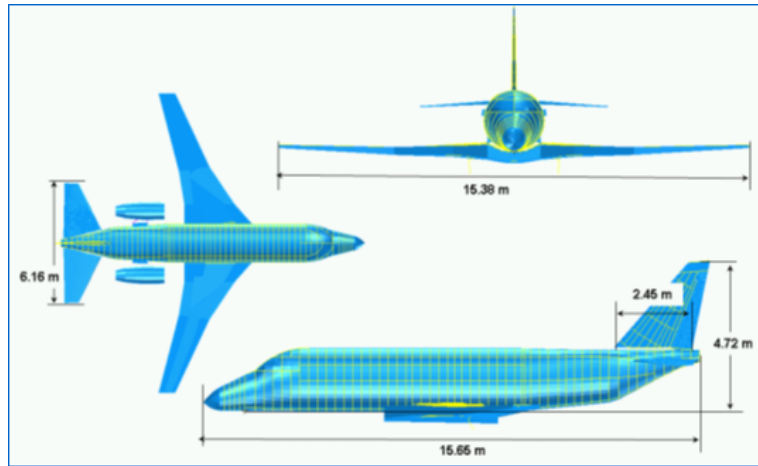


Figure 2. DAEDALOS aircraft model.

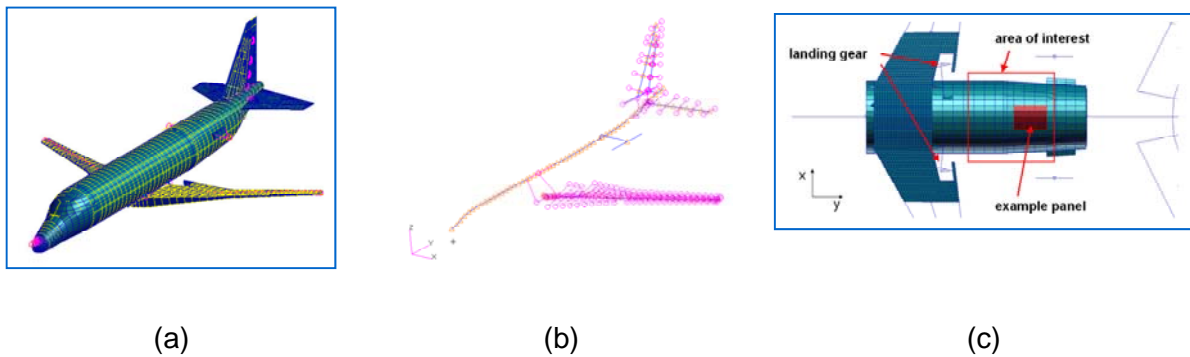


Figure 3. Different finite element models: (a) 3D coarse model, (b) stick model, (c) fuselage hybrid model.

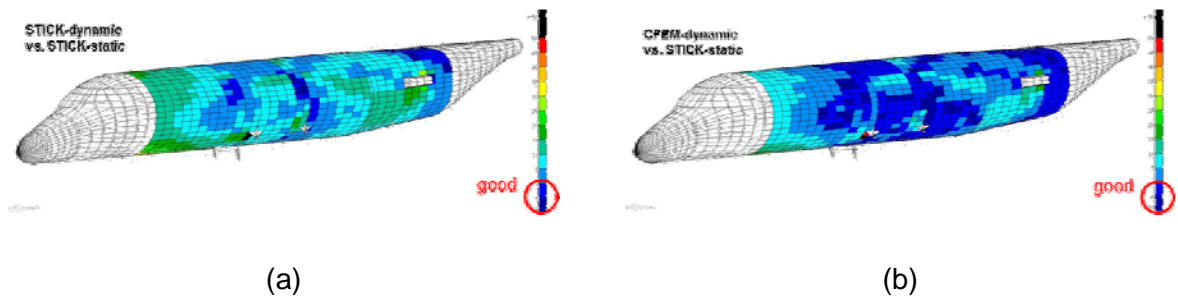


Figure 4. Comparison between different design approaches: (a) stick-dynamic vs stick-static, (b) CFEM-dynamic vs stick-dynamic.

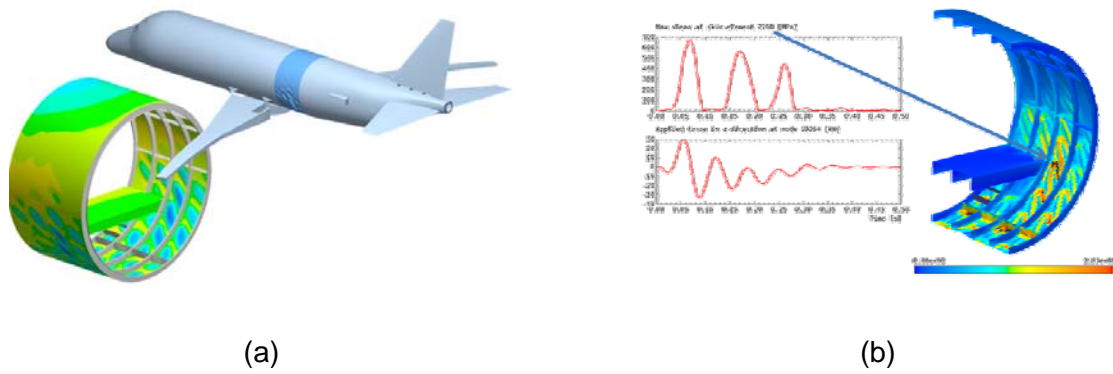


Figure 5. Global/local approach: (a) full aircraft and fuselage models, (b) details of the analysis results.

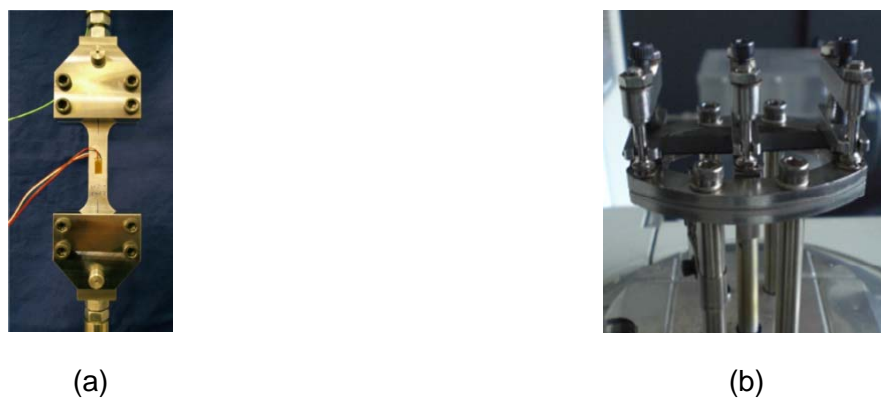


Figure 6. Damping measurement: (a) test set-up for tensile experiments, (b) DMA.



(a)



(b)



(c)

Figure 7. Static and dynamic tests of structures: (a) shell in post-buckling range, (b) shell ready for a dynamic test, (c) stiffened panel tested until failure.