

Figure: Comparison of ArrayCGH results for breast cancer for the exposed group (MAYAK, upper panel) and local control group (lower panel). The chromosomes are depicted from left to right in ascending order. Losses are in blue and gains in red. Boxes highlight statistically significant differences between the two groups ($P < 0.05$, $FDR < 0.1$).

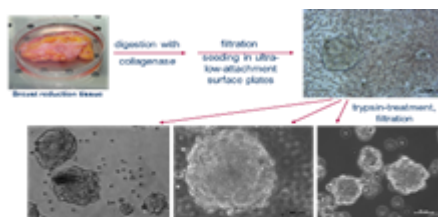


Figure 2.1.1 Standard protocol for isolation of mammospheres from primary breast tissue

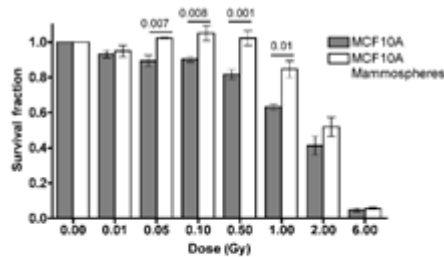


Fig 2.1.2. Clonogenic Survival response of MCF10A cells irradiated with 0.01-6 Gy X-rays either as monolayers or mammospheres

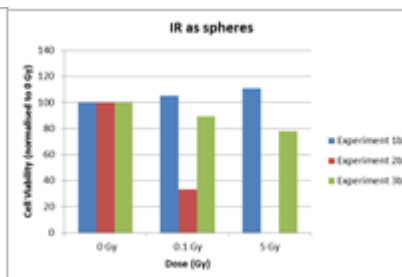
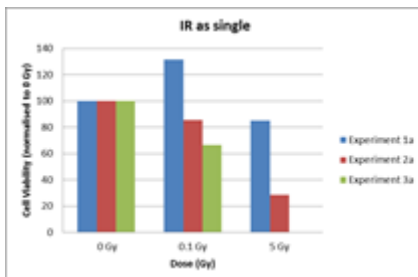


Fig 2.1.3. Viability test of stem cells purified from three different patient samples irradiated as single cells or mammospheres.

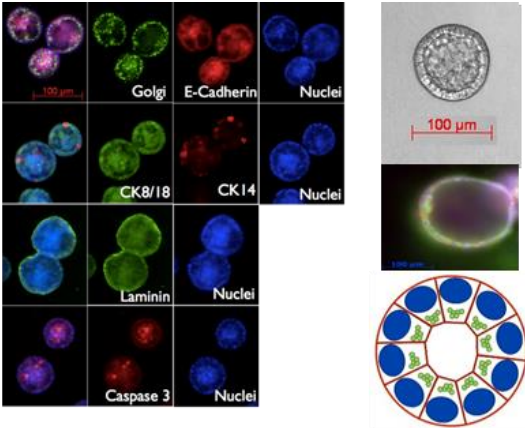


Fig 2.1.4. Staining of 3D acini structures for differentiation, apoptotic and subcellular markers