



Figures and images for the final report

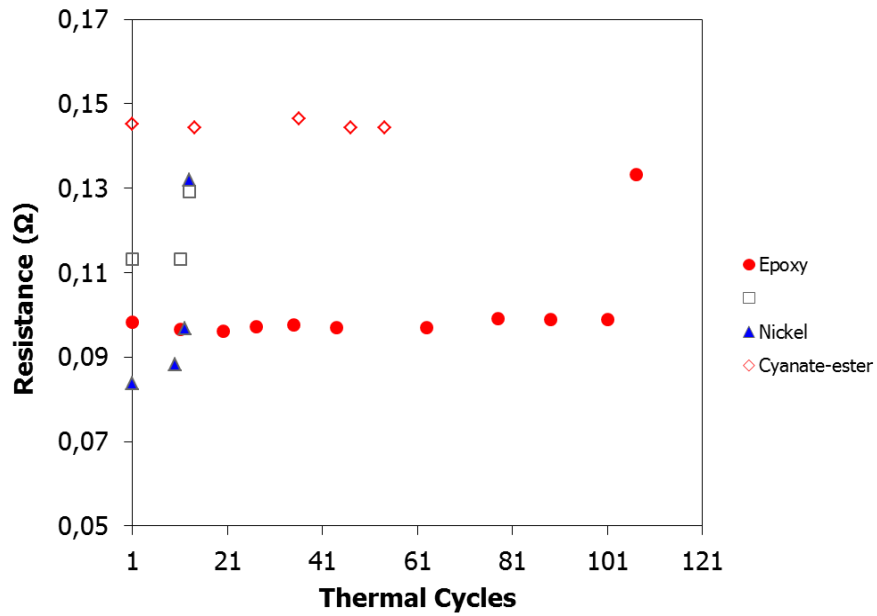


Figure 1: Electrical resistance measurements before and after failure



Figures and images for the final report

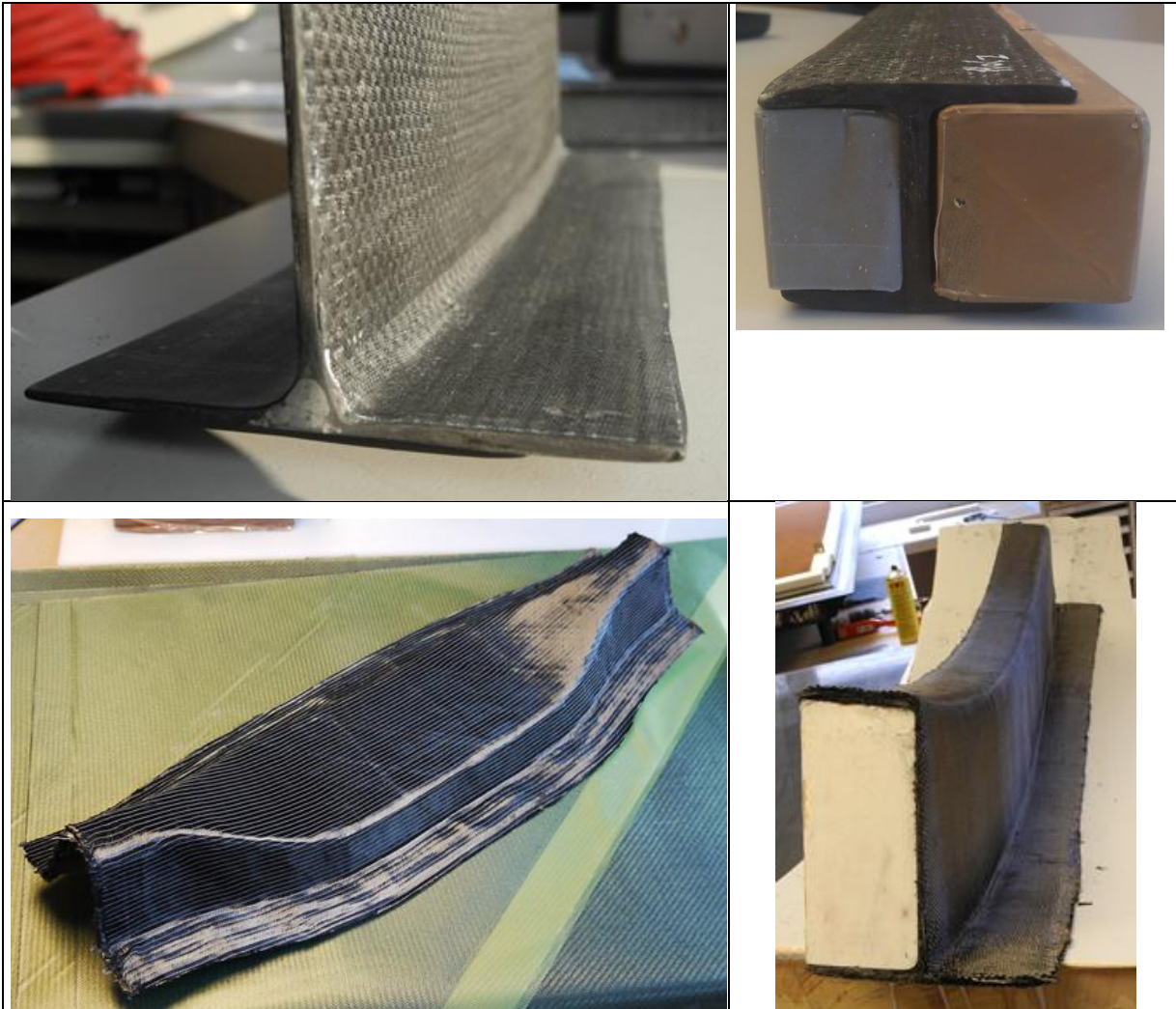


Figure 2: Stringer manufacturing trials

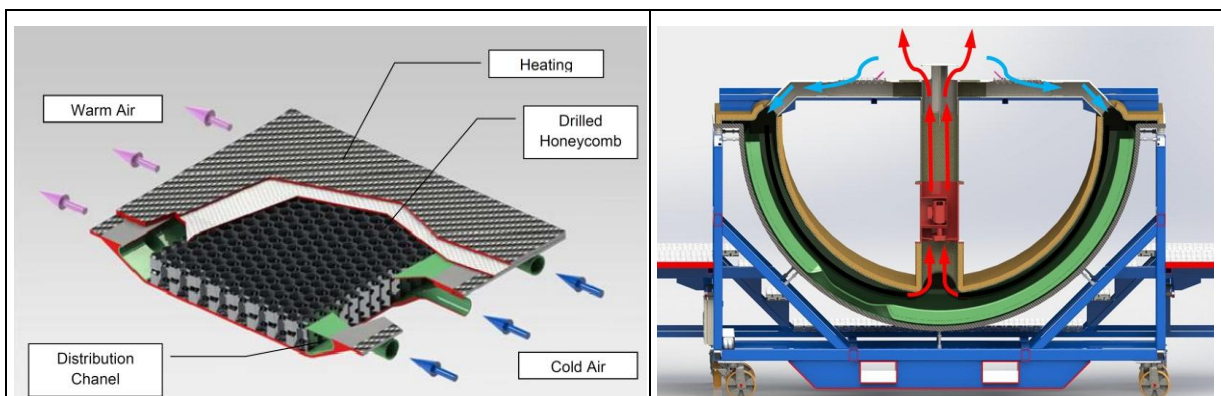


Figure 3: The two active cooling concepts for the nacelle tool



Figures and images for the final report

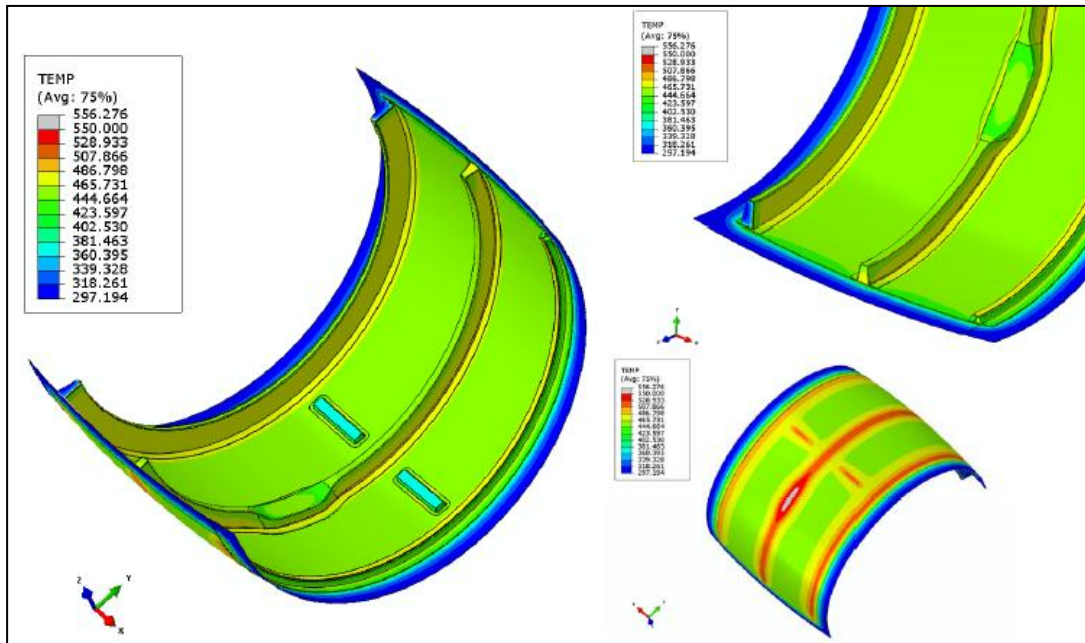


Figure 4: Results of the thermal analysis for the nacelle tool

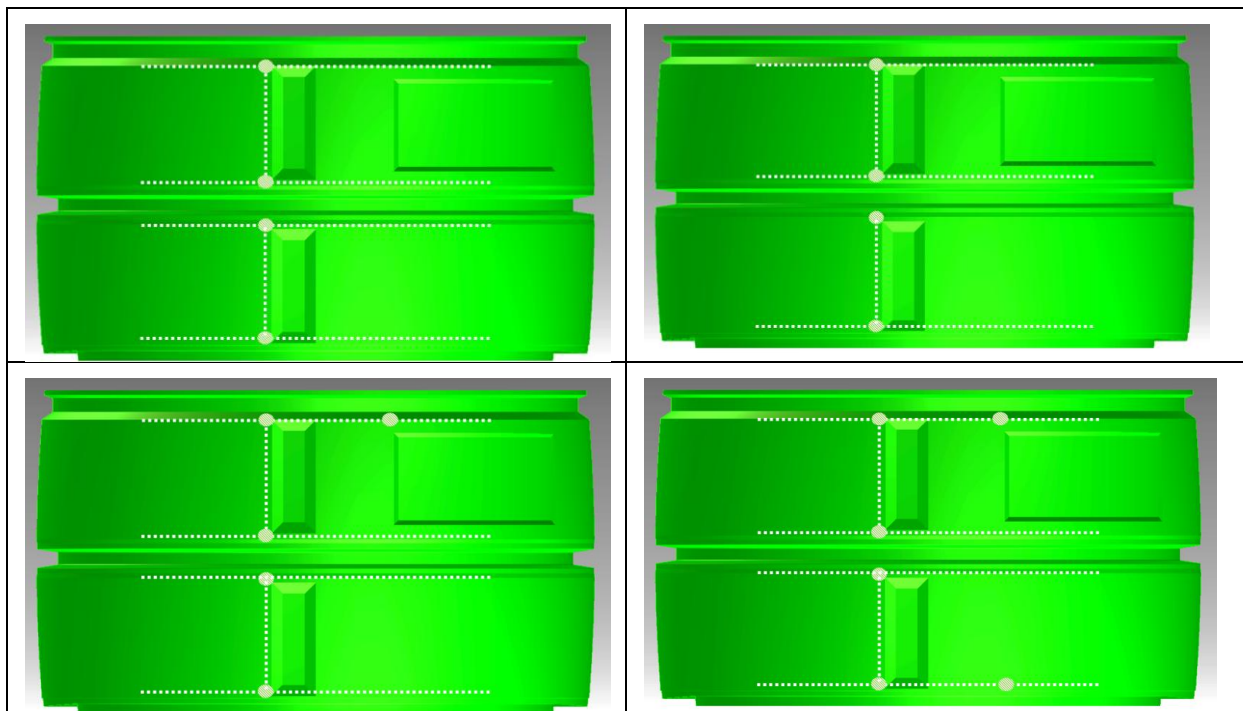


Figure 5: Alternative infusion strategies studied



Figures and images for the final report

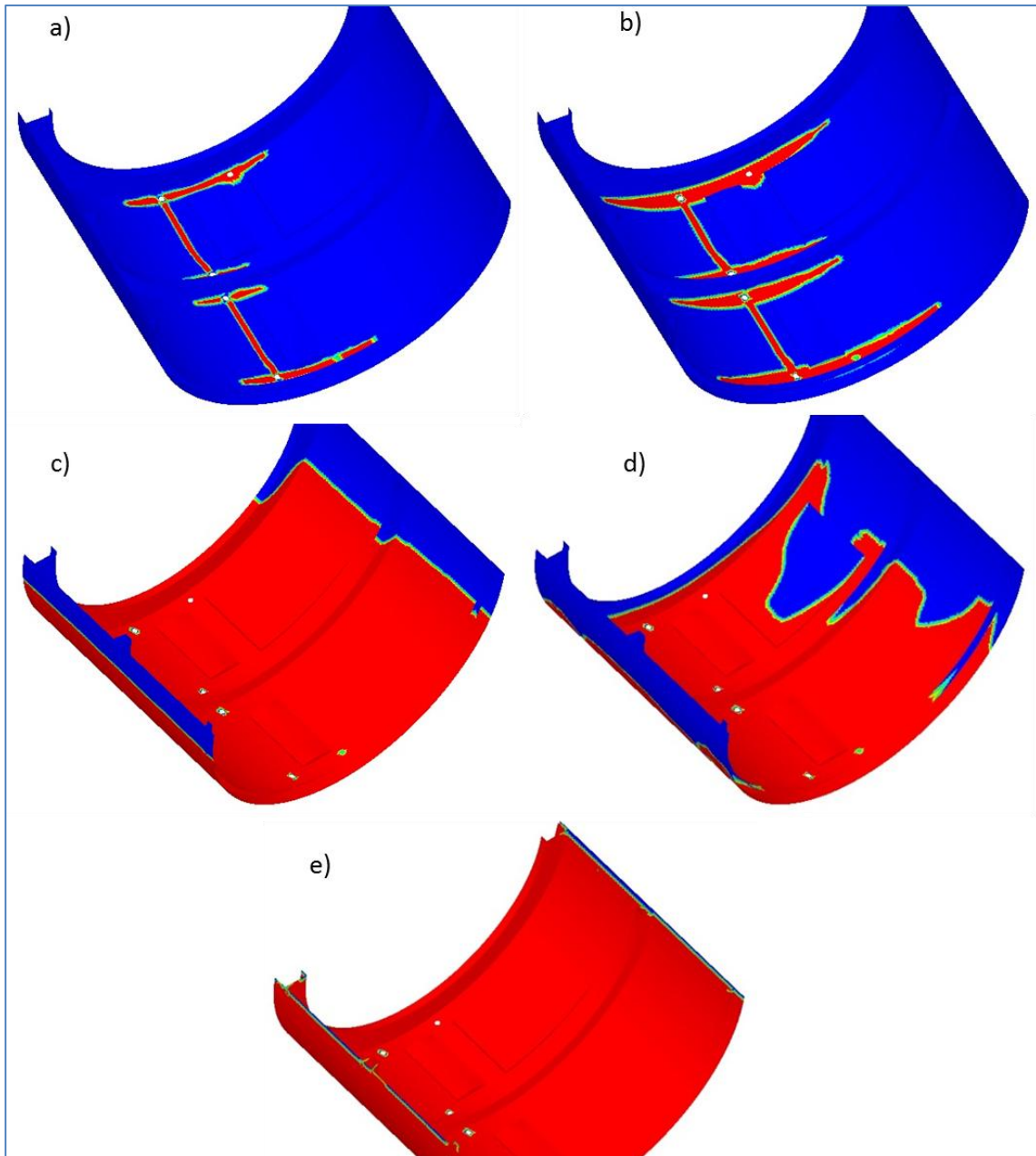


Figure 6: Indicative results of the mould filling simulation for an infusion strategy



Figures and images for the final report

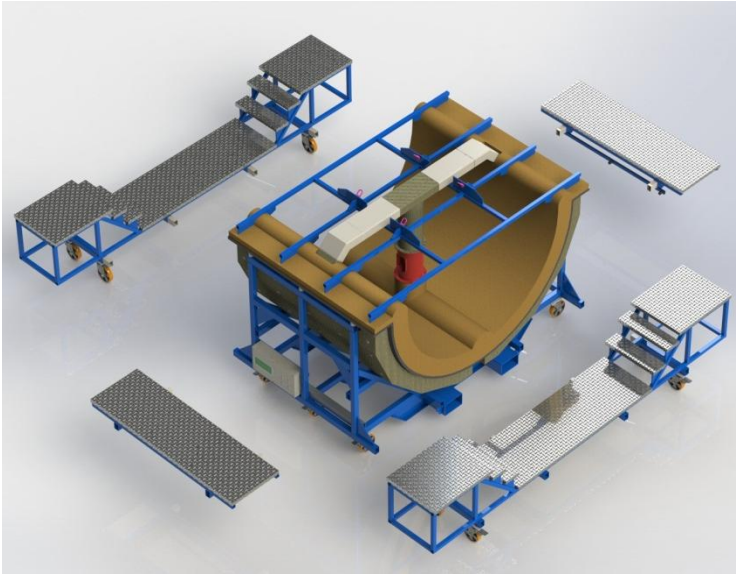


Figure 7 : The complete IRIDA prototype tool

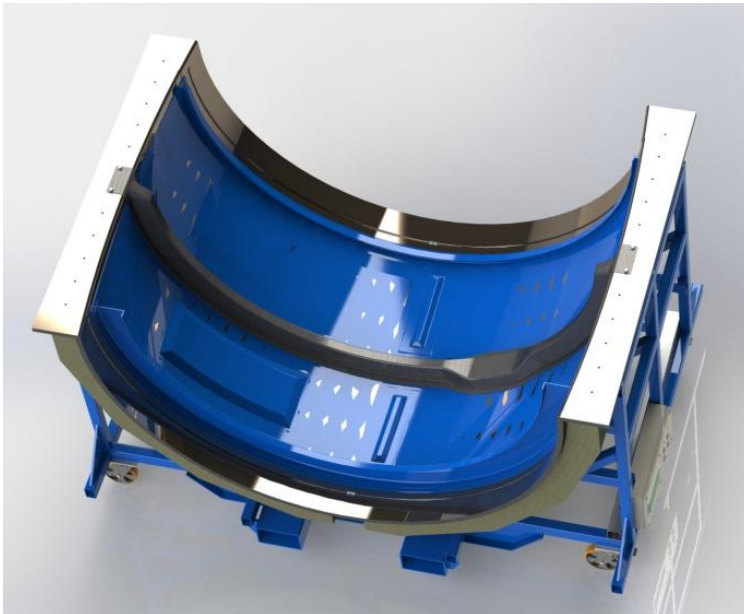
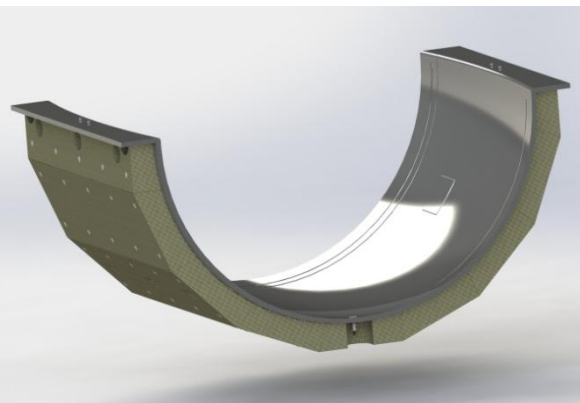


Figure 8 :The main infusion tool





Figures and images for the final report

Figure 9 :The manufactured main infusion tool and the original design

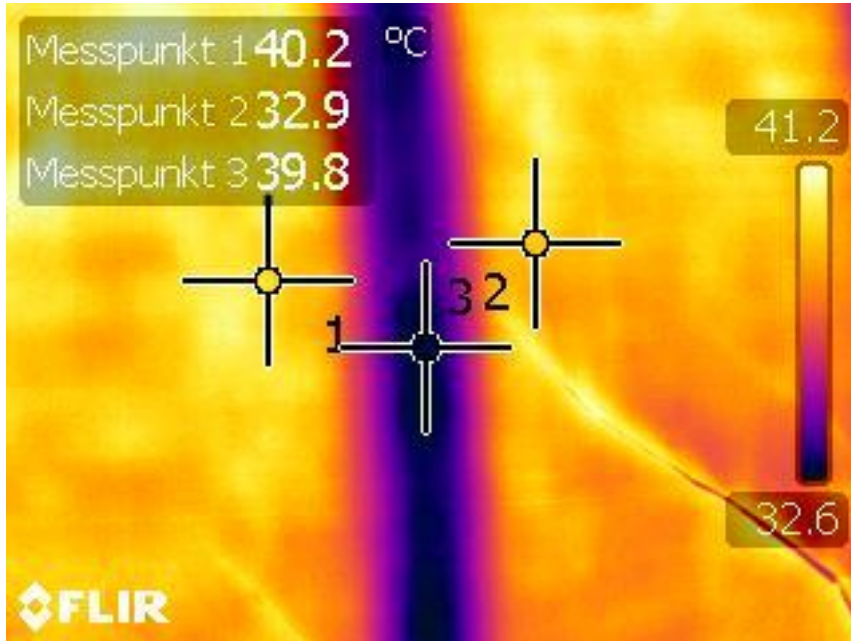


Figure 10 :Thermal imaging of the tool showing the clear drop of temperature in the stringer placement area



Figure 11 : The fiber preform inside the tool



Figures and images for the final report



Figure 12 :The nacelle demonstrator

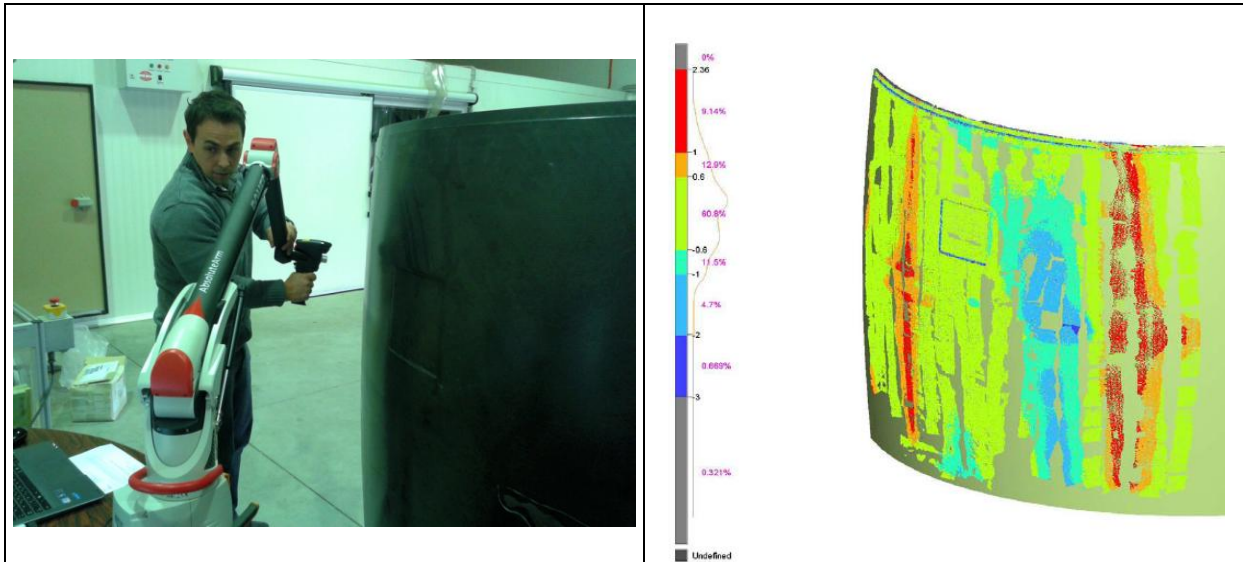
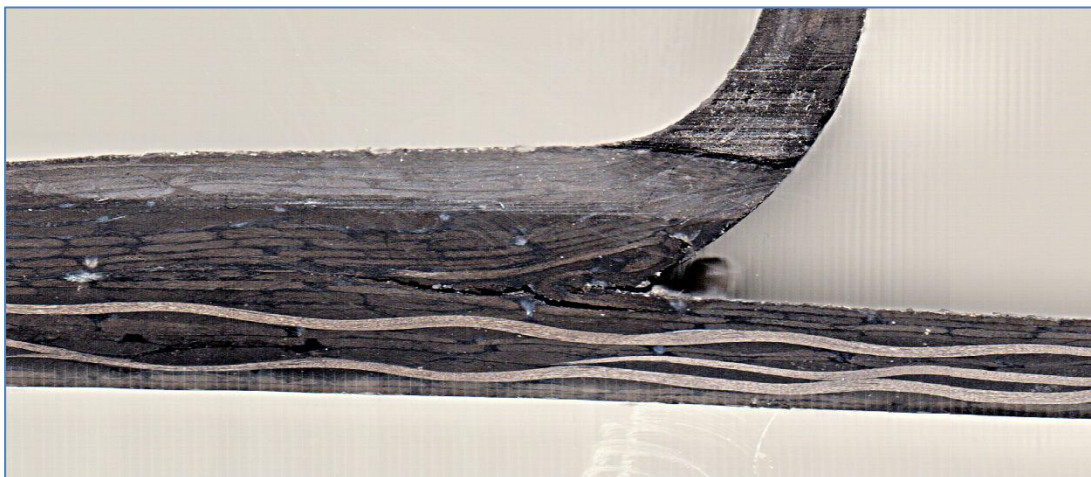


Figure 13 :Dimensional accuracy measurements





Figures and images for the final report



Figure 14 :Macrographs of the cross section cut out of the demo part showing major defects