

Table 1: List of NEAR² Network Members

ID	Institutions' full name	Acronym	Country
1	National Technological Platform - Interoperability of the Railway Infrastructure	SIZI	Czech Republic
2	University of Pardubice	UPa	Czech Republic
3	Brno University of Technology	BUT	Czech Republic
4	University of Žilina	UNIZA	Czech Republic
5	Dnepropetrovsk national university of railway transport	DNURT	Ukraine
6	Volodymyr Dahl East Ukrainian National University	VDEUNU	Ukraine
7	LLC SPE RAILWAYAUTOMATIC	RWA	Ukraine
8	State Enterprise "State Research Centre for Railway Transport of Ukraine"	SRCRTU	Ukraine
9	Ukrainian State Academy of Railway Transport	USART	Ukraine
10	Research Designs and Standards Organisation, Indian Railway	RDSO	India
11	Indian Institute of Technology, Kharagpur	IIT KGP	India
12	Indian Institute of Technology, Delhi	IIT Delhi	India
13	Xi'an Railway Scientific & Technical Research Institute	Xi'an	China
14	State educational establishment of higher professional education "Rostov State Transport University"	RSTU	Russian Federation
15	Federal state budget-funded educational institution of higher professional education «Far Eastern State Transport University»	FESTU	Russian Federation
16	Federal state budget-funded educational institution of higher professional education "Irkutsk State University of Railway Engineering"	ISURE	Russian Federation
17	Ural State University of Railway Transport	USURT	Russian Federation
18	Federal state budget-funded educational institution of higher professional education «Omsk State Transport University»	OSTU	Russian Federation
19	State budget-funded entity of higher professional education "Siberian Transport University"	STU	Russian Federation
20	Lithuanian Railways	LR	Lithuania

[NEAR2 Network](#)

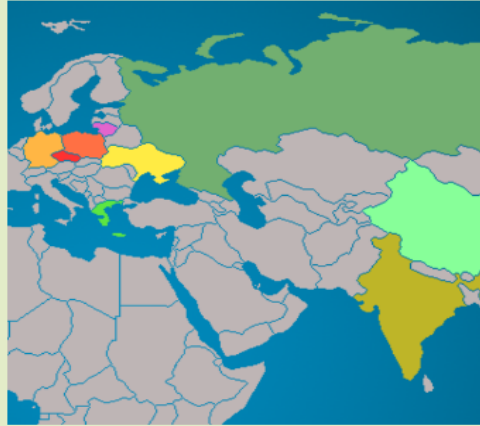
The NEAR2 Network of Rail Research Centres

The ultimate goal of the NEAR² Project is to develop a Rail Research Network along the Trans-Eurasian land bridge, drawing knowledge and expertise from leading institutions and researchers from both continents. The aim of this Network will be to examine issues such as new technologies, interoperability solutions and optimized operations, and to assess market needs. NEAR² will establish a unique, international, interdisciplinary research capacity with the goal of contributing in advancing a major sector of the regions' economy, as well as broaden the knowledge basis of the railway research and practice.

The Project will capitalize upon the existing structure and leverage the achievements of the existing European Rail Research Network, EURNEX, and build upon the reservoir of expertise of the project partners. The Network aims to become the resource arm of the relevant industry.

The NEAR² Network of Rail Research Centers includes institutions classified in **Working Groups** based on their expertise and according to the 10 EURNEX Poles of Excellence.

Information on all the Institutions, members of the NEAR2 Network is available in the [D2.2 "Data Collection Report"](#)



THE 10 WORKING GROUPS

Pole	Topic
1	Strategy and Economics
2	Operation and System Performance
3	Rolling Stock
4	Product Qualification Methods
5	Intelligent Mobility
6	Safety and Security
7	Environment and Energy Efficiency
8	Infrastructure and Signalling
9	Human Factors and Societal Aspects
10	Training and Education

Figure 1: On line Inventory of the NEAR² Railway Network

Table 2: NEAR² candidates accepted as corresponding EURNEX members

Institution Name	Institution full Name	Contact Person	Country, City	Patron, Pole Leader coordination
SIZI	National Technological Platform Interoperability of the Railway Infrastructure	Dohnal	Czech Republic, Praha	participation by CVUT&UPCE
VDEUNU	Volodymyr Dahl East Ukrainian National University	Chernetskaya-Beletskaya	Ukraine, Lugansk	Witold Olpinski
RWA	LLC SPE RAILWAYAUTOMATIC	Kuzmenko	Ukraine, Kharkov	Marina Aguado
USART	Ukrainian State Academy of Railway Transport	Lomot'ko	Ukraine, Kharkov	Riccardo Licciardello, Ricci + Pole9 Vanderhaegen
RDSO	Research Designs and Standards Organisation, Indian Railway	D. K. Agarwal	India, Lucknow	Markus Hecht Pole 8
IIT KGP	Indian Institute of Technology, Kharagpur	Mukhopadhyay	India, Kharagpur	Laurent Bouillaut
IIT Delhi	Indian Institute of Technology Delhi	Shahu	India, New Delhi	Stanislav Lenart
Xi'an	Xi'an Railway Scientific & Technical Research Institute	LUO	China, Xi'an	Anatoljjs Levchenkov
RSTU	State educational establishment of higher professional education "Rostov State Transport University"	Noskov	Russia, Rostov	Chris Nash Antwort da
FESTU	Federal state budget-funded educational institution of higher professional education «Far Eastern State Transport University»	Suy	Russia, Khabarovsk	Thomas Meißner
USURT	Ural State University of Railway Transport	Bushuev	Russia, Ekaterinburg	Manuel Pereira
OSTU	Federal state budget-funded educational institution of higher professional education «Omsk State Transport University»	Shantarenko	Russia, Omsk	Markus Hecht Pole 8
STU	State budget-funded entity of higher professional education "Siberian Transport University"	Bokarev	Russia, Novosibirsk	Sciutto/Saitto NITEL Pole 8, Marek Sitarz Pole 6

Table 3: NEAR² candidates accepted as full EURNEX members

No.1										
Issue No.2	√	√		√		√	√		√	√
Issue No.3	√	√			√	√		√		
Issue No.4	√	√	√	√	√	√	√	√		



Figure 2: The NEAR² Railway corridors

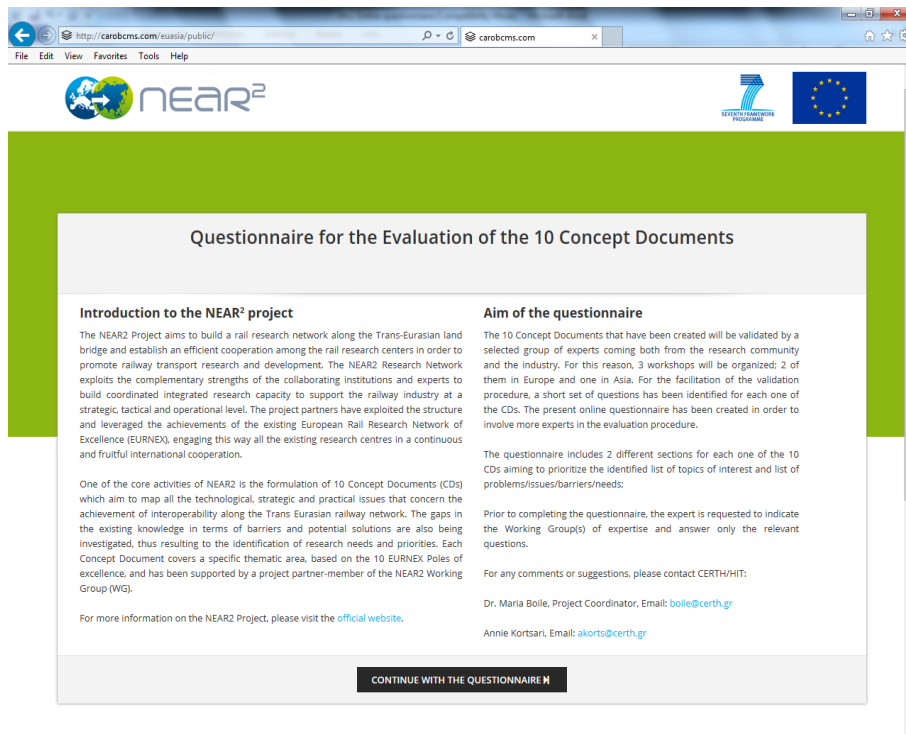


Figure 3: Home Page of the on-line questionnaire

Working Group 4 - Product Qualification Methods

Progress 1/2

1. Please prioritize the following identified Topics of Interest for the specific WG, with "1" being the most important topic in your opinion:

<input type="checkbox"/>	Intercontinental transport policy
<input type="checkbox"/>	Increasing role of intermodal freight transport
<input type="checkbox"/>	Implementation of the ICT measures
<input type="checkbox"/>	Harmonization and standardization as keys to efficiency
<input type="checkbox"/>	Cross acceptance – a "bridge" to interoperability
<input type="checkbox"/>	Other
<input type="checkbox"/>	Other
<input type="checkbox"/>	Other

Figure 4: Filling in the on-line questionnaire



Figure 5: The NEAR² 1st workshop in Vilnius, Lithuania



Figure 6: The NEAR² 2nd Workshop in Warsaw, Poland



Figure 7: The NEAR² 3rd Workshop in Shanghai, China



Project  **near²**
EUROPEAN – ASIAN RAILWAY TRANSPORT: ISSUES & PROSPECTS



Figure 8: The NEAR² Project Publication cover page

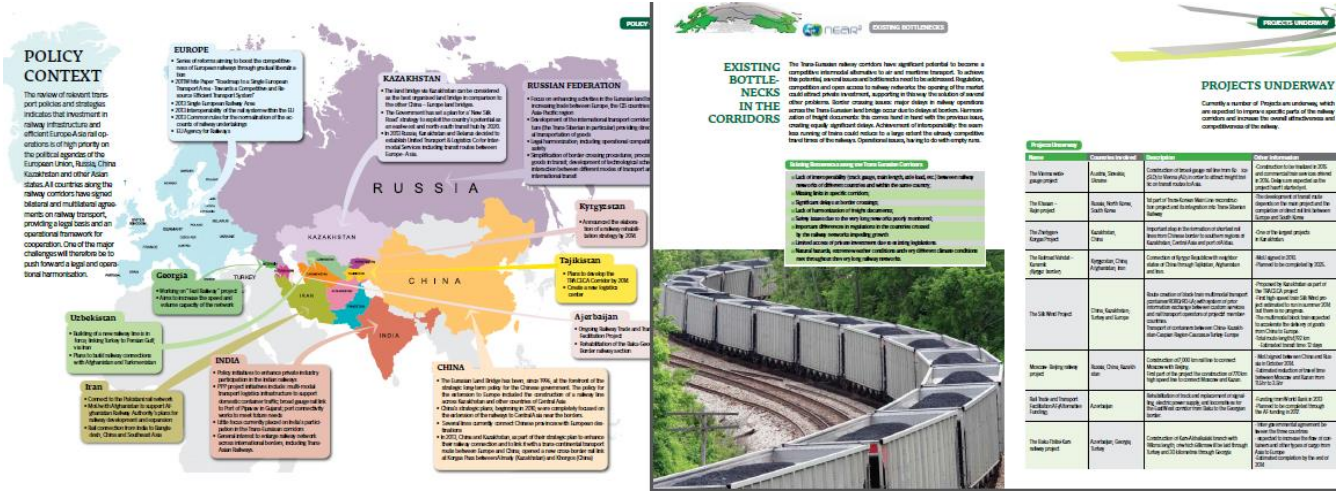


Figure 9: The 16-page Summary of the Project Publication – an Excerpt



Figure 10: The NEAR² Project logo



Figure 11: The NEAR² Project Poster



Figure 12: The NEAR² Project Brochure

Network of European - Asian Rail Research Capacities

2nd digital newsletter
April 2014

PROJECT INFORMATION:
Project NEAR²
Network of European-Asian Rail Research Capacities
7th Framework Programme

Funding Scheme:
Coordination and Support Action
Contract No:314254
Runtime:12/2012-11/2014
Website: www.near2-project.eu

The NEAR² project aims to integrate rail research institutions along the Trans-Eurasian land bridge and to establish an efficient cooperation among the scientific rail research communities in order to promote railway transport research and development. The NEAR² project exploits the complementary strengths of the collaborating institutions and experts to build coordinated integrated research capacity to support the railway industry at a strategic, tactical and operational level. 10 Working groups have been formed to work on specific topics. Their outcome is presented in 10 Concept Documents, which will broaden the knowledge base for future work in terms of research and operations. While these documents have been validated by experts from the research sector recently, they will be further improved by experts from the industry during workshops in Warsaw and Shanghai in June and July.

Figure 13: The NEAR2 2nd 8-monthly Newsletter



Figure 14: The NEAR² Final Project Brochure

Table 6: Organizations, Institutions and Companies represented in the NEAR² Conference

	Name of institution/company	Type of institution/company	Country
1	United Nations Economic Commission for Europe	International Organization	Europe
2	International Association Coordinating Council on Trans-Siberian Transportation	International Association	Europe-Asia
3	EURNEX	Network of research excellence	Europe/Germany
4	International Union of Railways	Railway Organization	Global
5	European Railway Agency	Railway Organization	Europe
6	Organization for the Cooperation between Railways	Railway Organization	Europe-Asia
7	Railway Technical Research Institute	Research Institute	Japan
8	Slovenian National Building and Civil Engineering Institute	Research Institute	Slovenia
9	DNDCUZ	Research Institute	Ukraine
10	Indian Institute of Management	Research institute	India
11	Chinese Academy of Engineering	Research Institute	China
12	CSR Central Academy	Research Institute	China

13	Brno University of Technology	University	Czech Republic
14	Dnipropetrovsk National University of Rail Transport	University	Ukraine
15	Budapest University of Technology and Economics	University	Hungary
16	Qigihar Rolling Stock	Railway Company	China
17	PKP, Polskie Linie Kolejowe	Railway Company	Poland
18	AWT Rail HU LTD	Railway Company	Hungary
19	COSCOe-logistics	Operator	China
20	Xian Railway Bureau	Operator	China
21	JSC Trans-container	Operator	Russian Federation
22	JSC "RZD"	Operator	Russian Federation
23	VNIIZT	Operator	Russian Federation
24	DB Schenker Polska	Operator	Poland
25	Lithuanian Railways	Operator	Lithuania
26	Collaborative Solutions	Consulting Company	USA
27	MC Mobility Consultants GmbH	Consulting Company	Austria
28	UBIMET	Consulting Company	Austria

Figure 15 NEAR² Final Conference Presenters



Figure 15: From left to right : V. Vinogradov (MIIT), K. Alexopoulos (UNECE), S. Aristov (Ministry of Transport of RF), V. Kruglov (MIIT), WH Steinicke (EURNEX), Maria Boile (CERTH), V Morozov (JSC RZD, not in the photo), V. Zhukov (OSJD).

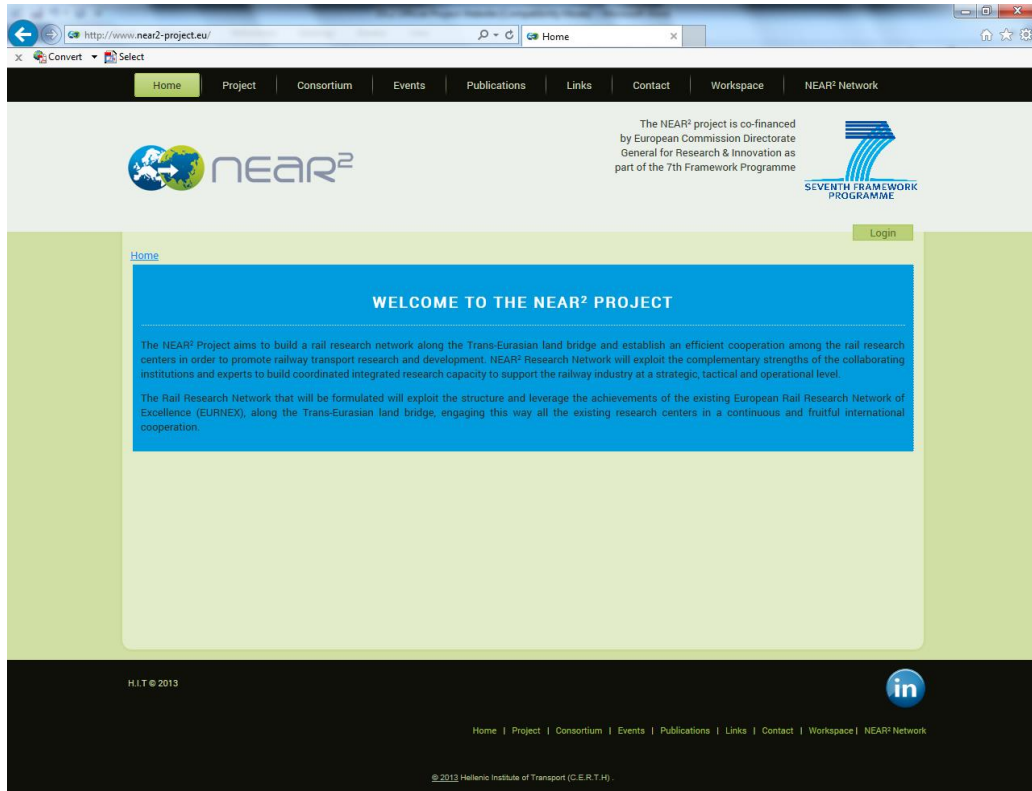


Figure 16: The NEAR2 official website

Table 7: List of Beneficiaries

	Partner	Country	Responsible person	Email
1	Centre for Research and Technology Hellas – Hellenic Institute of Transport	Greece	Dr. Maria Boile	boile@certh.gr
2	EURNEX Association	Germany	Prof. Wolfgang Steinicke	wsteinicke@eurnex.eu
3	Technical University of Berlin	Germany	Dr Martin Schiefelbusch, Prof. Markus Hecht	Schiefelbusch@nexusinstitut.de , markus.hecht@tu-berlin.de
4	Czech Technical University in Prague	Czech Republic	Prof. Vitek Malinovsky	malinovsky@fd.cvut.cz
5	Vilnius Gediminas Technical University	Lithuania	Prof. Dr. Gintautas Bureika	Gintautas.Bureika@vgtu.lt
6	State educational institution of higher professional education "Moscow State University of Railway	Russian Federation	Prof. Vladimir Solovyev	solovjov@gmail.com

	Engineering”			
7	A-Trans LLC	Russian Federation	Mr. Artem Voblov	Voblov.AV@a-trans.ru
8	Federal State Budgetary Educational Institution of the higher profession education “Petersburg State Transport University”	Russian Federation	Prof. Tamila Titova	tamila@pgups.ru
9	Tongji University of Shanghai	China	Prof. Xie Weida	tjxwd@163.com
10	Digital Bridge Bangalore - EIRC Consulting Private Limited	India	Ms. Surbhi Sharma	surbhi@itsmaindia.org
11	State Higher Educational Establishmeny Donetsk Railway Transport Institute of Ukrainian State Academy of Railway Transport	Ukraine	Prof. Cheptsov Michael	cheptsov@drti.donetsk.ua
12	INSTYTUT KOLEJNICTWA	Poland	Mr. Witold Olpinski	wolpinski@ikolej.pl
13	TRAI NOSE S.A.	Greece	Dr. Athanasios Ziliaskopoulos	