

Figure 1

Chic mRNA FISH (Cy3 probes)

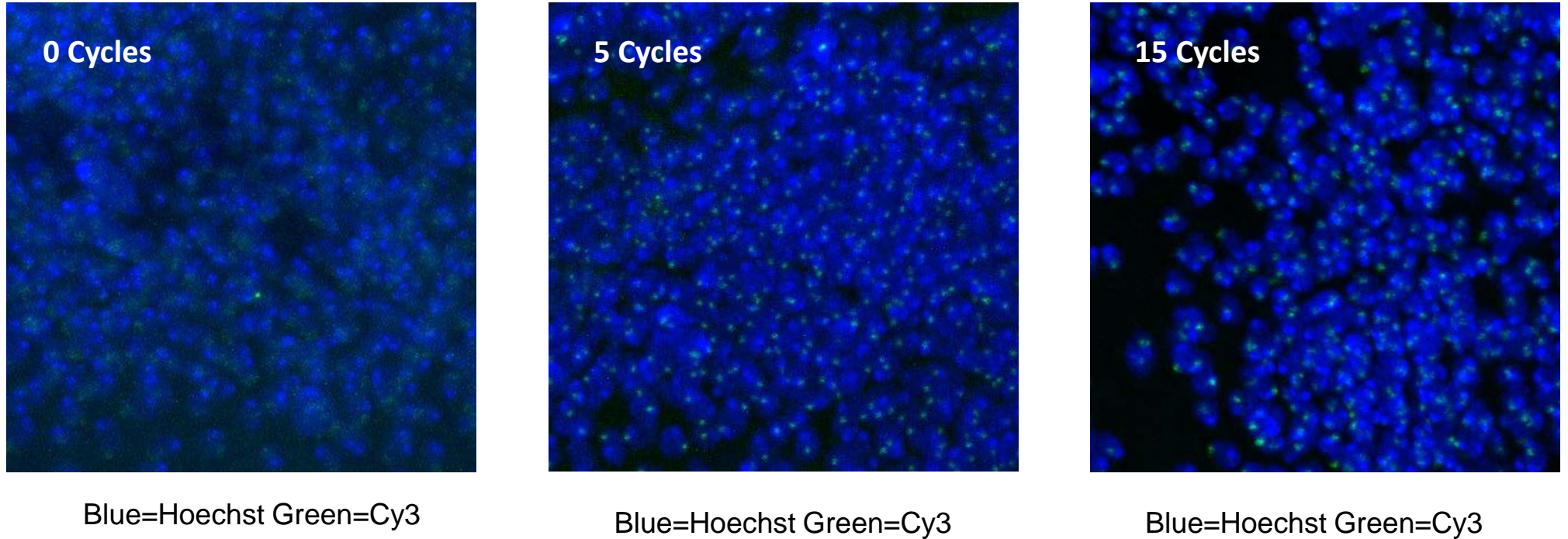
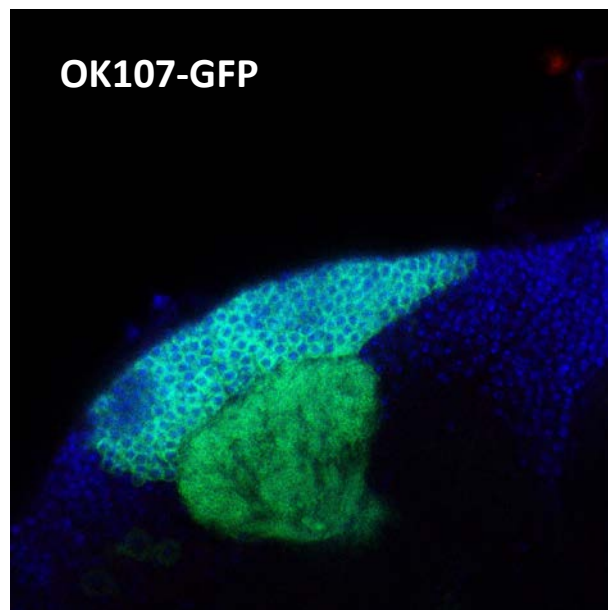


Figure 1. PCR based FISH protocol.

MB neurons from adult brains. An RT-PCR (0-5 and 15 amplification cycles) was performed prior the hybridization with anti-chic RNA-cy3 probes. The more cycles the biggest the spots containing cy3 probes. All the experiments were carried on using OK107 flies.

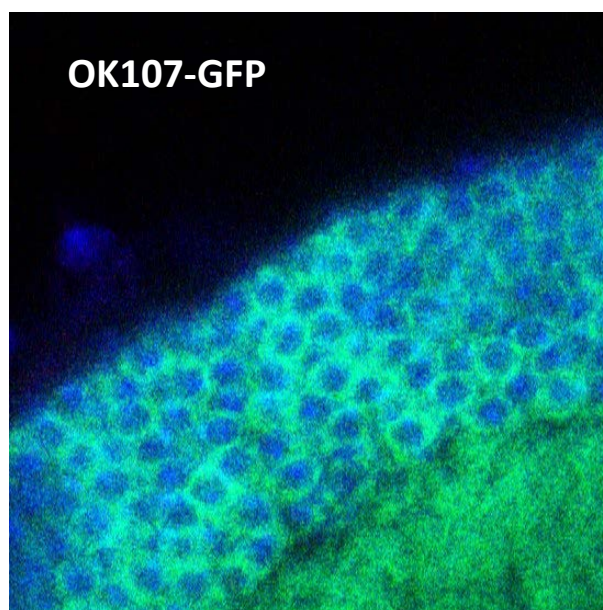
Figure 2

A



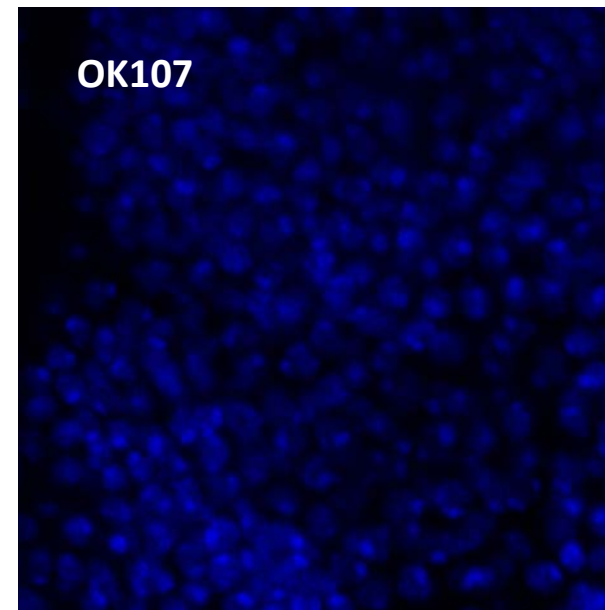
Blue=Hoechst Green=GFP
Red=Atto633

B



Blue=Hoechst Green=GFP
Red=Atto633

C



Blue=Hoechst Green=GFP
Red=Atto633

Figure 2. Multiprobe FISH.

A. FISH was performed on fresh dissected brains from flies expressing GFP in the MBs. B. A mixed of 23 probes against GFP mRNA were used. No specific signal can be observed inside KC where GFP is expressed. C. Brains from OK107 flies not expressing GFP were used as control. As expected no signal from GFP neither Atto633 could be recognized.