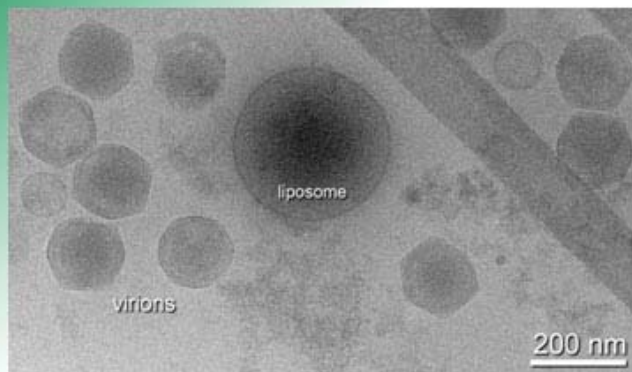
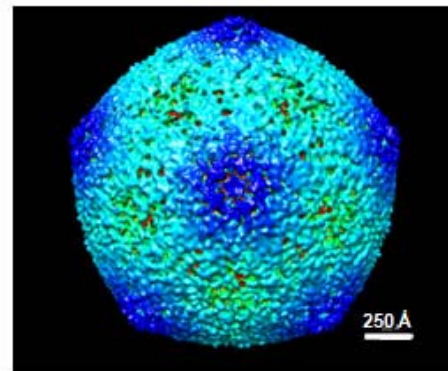


SPA Reconstruction of FV3

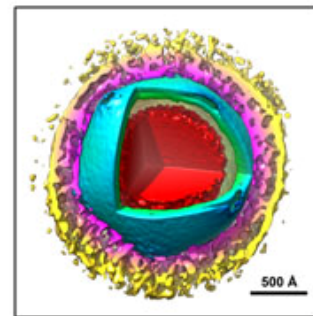
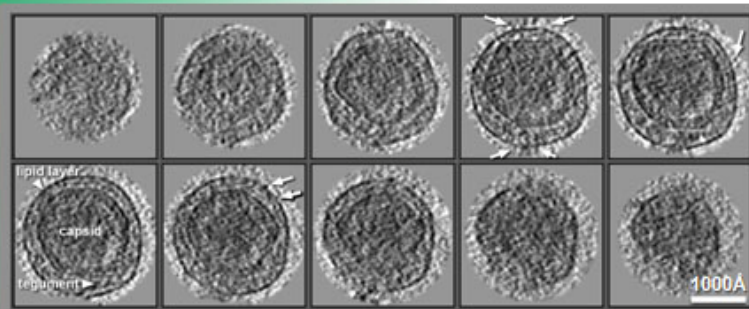


CryoEM micrograph of FV3 virions



FV3 capsid at 30-Å resolution

Morphology of Enveloped Virions



(Left) Slices (8Å thick) through an enveloped FV3 virion. Besides the relatively centered capsid, the external lipid envelope encapsidates a layer of viral or host proteins (tegument). The slices also reveal several short spike densities that might correspond to viral anchoring proteins.

(Right) Segmentation of the virion: DNA (red), inner membrane (green), capsid shell (blue), tegument (magenta), envelope (yellow).