

Final report Abstract Figure
DEGRAVIR

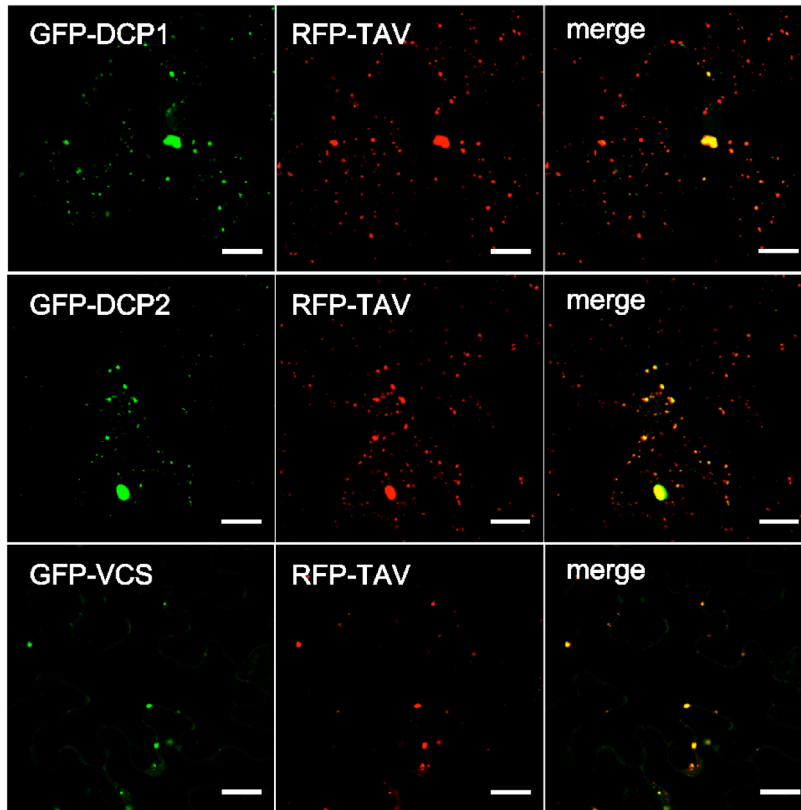


Figure 5. Cauliflower mosaic virus protein, translational transactivator/ viroplasmin (TAV) co-localizes with the decapping complex components—VCS, DCP1 and DCP2—N. benthamiana epidermal cells. Localization of TAV-RFP and VCS-GFP, DCP1-GFP, DCP2-GFP and superimposition of the two images are presented. Bars 10 μ m.